

Product datasheet for RC205811

CTRP1 (C1QTNF1) (NM_198594) Human Tagged ORF Clone

Product data:

Product Type:	Expression Plasmids
Product Name:	CTRP1 (C1QTNF1) (NM_198594) Human Tagged ORF Clone
Tag:	Myc-DDK
Symbol:	CTRP1
Synonyms:	CTRP1; GIP; ZSIG37
Mammalian Cell Selection:	Neomycin
Vector:	pCMV6-Entry (PS100001)
E. coli Selection:	Kanamycin (25 ug/mL)
ORF Nucleotide Sequence:	>RC205811 ORF sequence Red=Cloning site Blue=ORF Green=Tags(s)

TTTTGTAATACGACTCACTATAGGGCGGCCGGAATTCGTCGACTGGATCCGGTACCGAGGAGATCTGCC
GCC**CGCATCGCC**

ATGGGCTCCCGTGGACAGGGACTCTTGCTGGCGTACTGCCTGCTCCTTGCCTTTGCCTCTGGCCTGGTCC
TGAGTCGTGTGCCCCATGTCCAGGGGAACAGCAGGAGTGGGAGGGGACTGAGGAGCTGCCGTGCCTCC
GGACCATGCCGAGAGGGCTGAAGAACAACATGAAAAATACAGGCCAGTCAGGACCAGGGGCTCCCTGCT
TCCCGGTGCTTGCCTGTGTGACCCCGGTACCTCCATGTACCCGGCGACCGCCGTGCCCATCAACA
TCACTATCTTGAAGGGGAGAAGGGTGACCGCGGAGATCGAGGCCTCAAGGGAAATATGGCAAAACAGG
CTCAGCAGGGGCCAGGGCCACACTGGACCCAAAGGGCAGAAGGGCTCCATGGGGGCCCTGGGGAGCGG
TGCAAGAGCCACTACGCCCTTTTCGGTGGGCCGGAAGAAGCCCATGCACAGCAACCACTACTACCAGA
CGGTGATCTTCGACACGGAGTTCGTGAACCTCTACGACCACTTCAACATGTTACCCGGCAAGTTCTACTG
CTACGTGCCCGCCCTCTACTTCTCAGCCTCAACGTGCACACCTGGAACCAGAAGGAGACCTACCTGCAC
ATCATGAAGAACGAGGAGGAGGTGGTGTCTTGTTCGCGCAGGTGGGCGACCGCAGCATCATGCAAAGCC
AGAGCCTGATGCTGGAGCTGCGAGAGCAGGACCAGGTGTGGGTACGCCTTACAAGGGCGAACGTGAGAA
CGCCATCTTCAGCGAGGAGCTGGACACCTACATCACCTTCAGTGGCTACCTGGTCAAGCACGCCACCGAG
CCC

ACGCGTACGCGGCCGCTCGAGCAGAACTCATCTCAGAAGAGGATCTGGCAGCAAATGATATCCTGGATT
ACAAGGATGACGACGATAAGGTTAA



[View online »](#)

Protein Sequence: >RC205811 protein sequence
Red=Cloning site Green=Tags(s)

MGSRGQGLLLAYCLLLAFASGLVLSRVPHVQGEQQEWEGTEELPSPPDHAERAEQHEKYRPSQDQGLPA
 SRCLRCCDPGTSMPATAVPQINITILKGEKGDGRGLQGYGKTGSAGARGHTGPKGQKGSMSGAPGER
 CKSHYAAF SVGRKKPMHSNHYYQTVIFDTEFVNLYDHFNMFTGKFYCYVPLGYFFSLNVHTWNQKETYLH
 IMKNEEEVVILFAQVGDRESIMQSLSMLELREQDQVWVRLYKGERENAI FSEELDTYIT FSGYLVKHATE
 P

TRTRPLEQKLISEEDLAANDILDYKDDDDKV

Chromatograms: https://cdn.origene.com/chromatograms/mk6574_c07.zip

Restriction Sites: SgfI-MluI

Cloning Scheme:



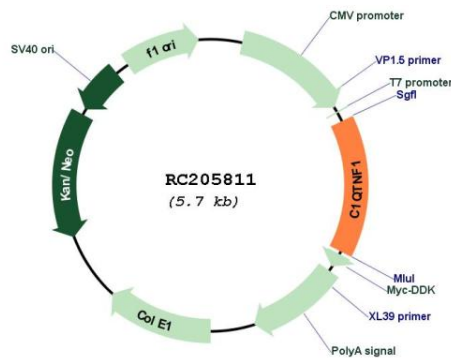
ACCN: NM_198594

ORF Size: 843 bp

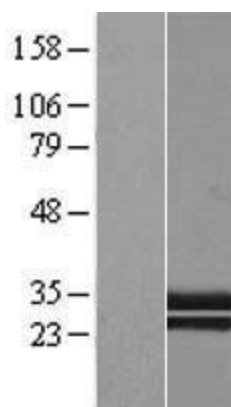
OTI Disclaimer: Due to the inherent nature of this plasmid, standard methods to replicate additional amounts of DNA in E. coli are highly likely to result in mutations and/or rearrangements. Therefore, OriGene does not guarantee the capability to replicate this plasmid DNA. Additional amounts of DNA can be purchased from OriGene with batch-specific, full-sequence verification at a reduced cost. Please contact our customer care team at custsupport@origene.com or by calling 301.340.3188 option 3 for pricing and delivery.

The molecular sequence of this clone aligns with the gene accession number as a point of reference only. However, individual transcript sequences of the same gene can differ through naturally occurring variations (e.g. polymorphisms), each with its own valid existence. This clone is substantially in agreement with the reference, but a complete review of all prevailing variants is recommended prior to use. [More info](#)

OTI Annotation:	This clone was engineered to express the complete ORF with an expression tag. Expression varies depending on the nature of the gene.
Components:	The ORF clone is ion-exchange column purified and shipped in a 2D barcoded Matrix tube containing 10ug of transfection-ready, dried plasmid DNA (reconstitute with 100 ul of water).
Reconstitution Method:	<ol style="list-style-type: none"> 1. Centrifuge at 5,000xg for 5min. 2. Carefully open the tube and add 100ul of sterile water to dissolve the DNA. 3. Close the tube and incubate for 10 minutes at room temperature. 4. Briefly vortex the tube and then do a quick spin (less than 5000xg) to concentrate the liquid at the bottom. 5. Store the suspended plasmid at -20°C. The DNA is stable for at least one year from date of shipping when stored at -20°C.
RefSeq Size:	2837 bp
RefSeq ORF:	600 bp
Locus ID:	114897
UniProt ID:	Q9BXJ1
Cytogenetics:	17q25.3
Protein Families:	Druggable Genome, Secreted Protein, Transmembrane
MW:	31.7 kDa

Product images:


Circular map for RC205811



Western blot validation of overexpression lysate (Cat# [LY404798]) using anti-DDK antibody (Cat# [TA50011-100]). Left: Cell lysates from untransfected HEK293T cells; Right: Cell lysates from HEK293T cells transfected with RC205811 using transfection reagent MegaTran 2.0 (Cat# [TT210002]).