

## Product datasheet for **RC205810**

### Calneuron 1 (CALN1) (NM\_031468) Human Tagged ORF Clone

#### Product data:

Product Type:	Expression Plasmids
Product Name:	Calneuron 1 (CALN1) (NM_031468) Human Tagged ORF Clone
Tag:	Myc-DDK
Symbol:	Calneuron 1
Synonyms:	CABP8
Mammalian Cell Selection:	Neomycin
Vector:	pCMV6-Entry (PS100001)
E. coli Selection:	Kanamycin (25 ug/mL)
ORF Nucleotide Sequence:	>RC205810 ORF sequence Red=Cloning site Blue=ORF Green=Tags(s)

TTTTGTAATACGACTCACTATAGGGCGGCCGGAATTCGTCGACTGGATCCGGTACCGAGGAGATCTGCC  
GCC**CGATCGCC**

ATGCCGTTCCACCATGTGACCGCCGGCTTGTGTACAAGGGGAATTACCTCAACCGATCGCTCTCTGCTG  
GCAGTGACAGCGAACAGCTGGCTAATATCTCCGTGGAGGAGCTCGATGAAATCCGAGAGGCCTTTCGGGT  
TCTGGACCGGGATGGGAACGGCTTCATCTCCAAGCAGGAGCTGGGCATGGCCATGCGCTCTTTGGGGTAC  
ATGCCAAGCGAGGTGGAGCTGGCCATCATCATGCAGCGCTTGGACATGGACGGGGATGGCCAGTGGATT  
TTGATGAATTCATGACCATTCTTGGCCCAAACCTGGTGTCTTCAGAAGGTCGCGATGGTTTTCTTGGGAA  
CAGGATAGACAGCATATTCTGGCAGTTTGACATGCAAAGGATAACTCTGGAAGAGTTGAAGCACATTCTC  
TATCATGCCTTCCGAGACCACCTAACGATGAAGGACATTGAGAACATCATTATCAATGAGGAAGAGAGCC  
TGAATGAGACCTCGGGAACTGCCAAACAGAGTTTGAAGGAGTGCATTCCAGAAGCAGAACAGACAGAC  
CTGCGTCCGGAAGAGCCTCATATGCGCCTTGGCTATGGCCTTCATCATCAGTGTCTGCTGATTGCGACC  
AACCAGATACTCCGAGCGGCATGGAG

**ACGCGT**ACGCGGGCCGCTCGAGCAGAACTCATCTCAGAAGAGGATCTGGCAGCAAATGATATCCTGGATT  
ACAAGGATGACGACGATAAGGTTTAA



[View online »](#)

**Protein Sequence:** >RC205810 protein sequence  
Red=Cloning site Green=Tags(s)

MPFHVHTAGLLYKGNLNRSL SAGSDSEQLANISVEELDEIREAFRVLDRDGNFISKQELGMAMRSLGY  
 MPSEVELAIIMQRLDMDGGQVDFDEFMTILGPKLVSEGRDGLGNTIDSI FWQFDMQRITL EELKHIL  
 YHAFRDHLTMKDIENIIINEEESLNETSNGCQTEFEGVHSQKQNRQTCVRKSLICAFAMAFIISVMLIAA  
 NQILRSGME

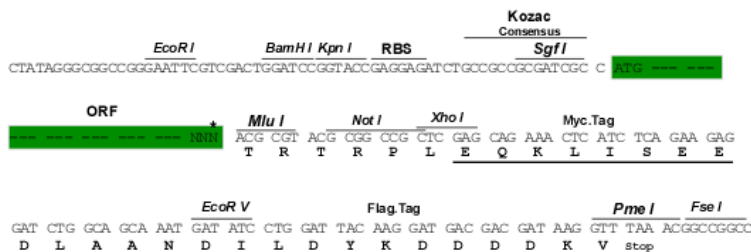
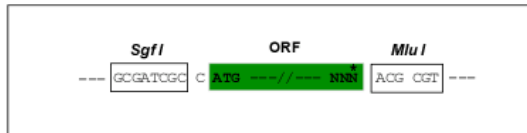
TRTRPLEQKLISEEDLAANDILDYKDDDDKV

**Chromatograms:** [https://cdn.origene.com/chromatograms/mk6420\\_d05.zip](https://cdn.origene.com/chromatograms/mk6420_d05.zip)

**Restriction Sites:** SgfI-MluI

**Cloning Scheme:**

Cloning sites used for ORF Shuttling:



\* The last codon before the Stop codon of the ORF

**ACCN:** NM\_031468

**ORF Size:** 657 bp

**OTI Disclaimer:** The molecular sequence of this clone aligns with the gene accession number as a point of reference only. However, individual transcript sequences of the same gene can differ through naturally occurring variations (e.g. polymorphisms), each with its own valid existence. This clone is substantially in agreement with the reference, but a complete review of all prevailing variants is recommended prior to use. [More info](#)

**OTI Annotation:** This clone was engineered to express the complete ORF with an expression tag. Expression varies depending on the nature of the gene.

**Components:** The ORF clone is ion-exchange column purified and shipped in a 2D barcoded Matrix tube containing 10ug of transfection-ready, dried plasmid DNA (reconstitute with 100 ul of water).

**Reconstitution Method:**

1. Centrifuge at 5,000xg for 5min.
2. Carefully open the tube and add 100ul of sterile water to dissolve the DNA.
3. Close the tube and incubate for 10 minutes at room temperature.
4. Briefly vortex the tube and then do a quick spin (less than 5000xg) to concentrate the liquid at the bottom.
5. Store the suspended plasmid at -20°C. The DNA is stable for at least one year from date of shipping when stored at -20°C.

**RefSeq:** [NM\\_031468.2](#), [NP\\_113656.1](#)

**RefSeq Size:** 9500 bp

**RefSeq ORF:** 786 bp

**Locus ID:** 83698

**UniProt ID:** [Q9BXU9](#)

**Cytogenetics:** 7q11.22

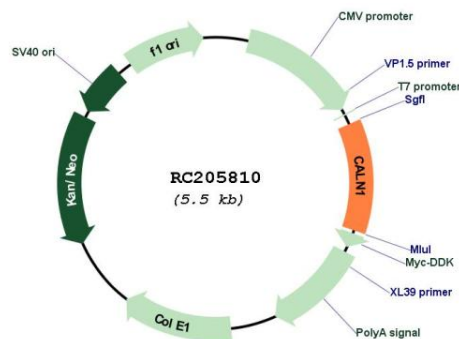
**Domains:** EFh

**Protein Families:** Transmembrane

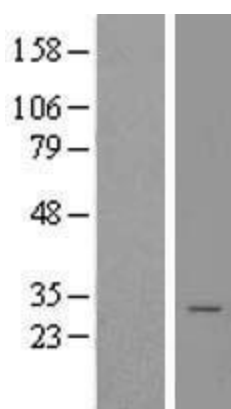
**MW:** 24.8 kDa

**Gene Summary:** This gene encodes a protein with high similarity to the calcium-binding proteins of the calmodulin family. The encoded protein contains two EF-hand domains and potential calcium-binding sites. Alternative splicing results in multiple transcript variants. [provided by RefSeq, Jul 2008]

## Product images:



Circular map for RC205810



Western blot validation of overexpression lysate (Cat# [LY410502]) using anti-DDK antibody (Cat# [TA50011-100]). Left: Cell lysates from untransfected HEK293T cells; Right: Cell lysates from HEK293T cells transfected with RC205810 using transfection reagent MegaTran 2.0 (Cat# [TT210002]).