

## Product datasheet for **RC205808**

### MAF1 (NM\_032272) Human Tagged ORF Clone

#### Product data:

Product Type:	Expression Plasmids
Product Name:	MAF1 (NM_032272) Human Tagged ORF Clone
Tag:	Myc-DDK
Symbol:	MAF1
Mammalian Cell Selection:	Neomycin
Vector:	pCMV6-Entry (PS100001)
E. coli Selection:	Kanamycin (25 ug/mL)
ORF Nucleotide Sequence:	>RC205808 ORF sequence Red=Cloning site Blue=ORF Green=Tags(s)

TTTTGTAATACGACTCACTATAGGGCGGCCGGAATTCGTCGACTGGATCCGGTACCGAGGAGATCTGCC  
GCC**CGATCGCC**

ATGAAGCTATTGGAGAACTCGAGCTTTGAAGCCATCAACTCACAGCTGACTGTGGAGACCGGAGATGCC  
ACATCATTGGCAGGATTGAGAGCTACTCATGTAAGATGGCAGGAGACGACAAACACATGTTCAAGCAGTT  
CTGCCAGGAGGGCCAGCCCCACGTGCTGGAGGCACTTTCTCACCCAGACTTCAGGACTGAGCCCCAGC  
AGACTCAGCAAAAGCCAAGGCGGTGAGGAGGAGGGCCCCCTCAGTGACAAGTGCAGCCGCAAGACCCTCT  
TCTACCTGATTGCCAGCTCAATGAGTCCTTCAGGCCTGACTATGACTTCAGCACAGCCCGCAGCCATGA  
GTTGAGCCGGGAGCCAGCCTTAGCTGGGTGGTGAATGCAGTCAACTGCAGTCTGTTCTCAGCTGTGCGG  
GAGGACTTCAAGGATCTGAAACCACAGCTGTGGAACGCGGTGGACGAGGAGATCTGCCTGGCTGAATGTG  
ACATCTACAGCTATAACCCAGACTTGGACTCAGATCCCTTCGGGGAGGATGGTAGCCTCTGGTCTTCAA  
CTACTTCTTACAACAAGCGGCTCAAGCGAATCGTCTTCTTTAGCTGCCGTTCCATCAGTGGCTCCACC  
TACACACCCTCAGAGGCAGGCAACGAGCTGGACATGGAGCTGGGGGAGGAGGAGGTGGAGGAAGAAAGCA  
GAAGCAGGGGCAGTGGGGCCGAGGAGACCAGCACCATGGAGGAGGACAGGGTCCCAGTGATCTGTATT

**ACGCGT**ACGCGGCCGCTCGAGCAGAAACTCATCTCAGAAGAGGATCTGGCAGCAAATGATATCCTGGATT  
ACAAGGATGACGACGATAAGGTTTAA



[View online »](#)

**Protein Sequence:** >RC205808 protein sequence  
 Red=Cloning site Green=Tags(s)

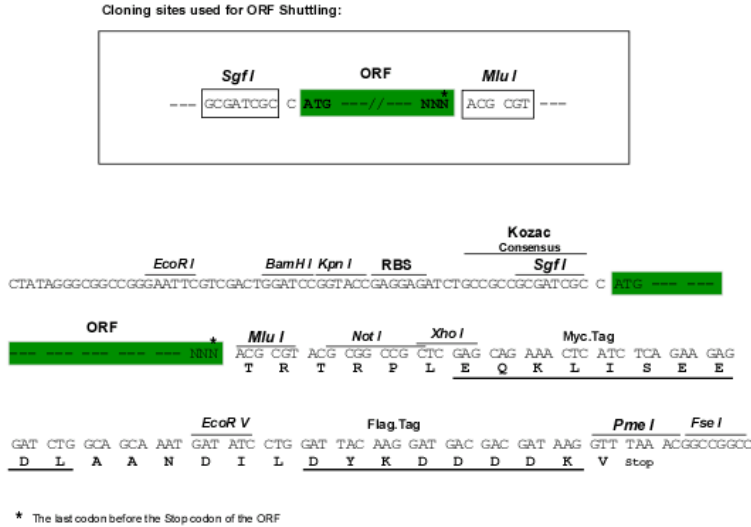
MKLLNSSFEAINSQLTVETGDAHIIGRIESYSCKMAGDDKHMFKQFCQEGQPHVLEALSPPTSGLSPLS  
 RLSKSQGGEEGPLSDKCSRKTLFYLIATLNEFRPDYDFSTARSHESREPSLSWVNVNCSLFSAVR  
 EDFKDLKPQLWNAVDEEICLAECDIYSYNDLSDPFGEDGSLWSFNFFYNKRLKRIVFFSCRISGSST  
 YTPSEAGNELDMELGEEVEEESRSRGSAGAEETSTMEEDRVPVICI

TRTRPLEQKLISEEDLAANDILDYKDDDDKV

**Chromatograms:** [https://cdn.origene.com/chromatograms/mk6433\\_g05.zip](https://cdn.origene.com/chromatograms/mk6433_g05.zip)

**Restriction Sites:** SgfI-MluI

**Cloning Scheme:**



**ACCN:** NM\_032272

**ORF Size:** 768 bp

**OTI Disclaimer:** The molecular sequence of this clone aligns with the gene accession number as a point of reference only. However, individual transcript sequences of the same gene can differ through naturally occurring variations (e.g. polymorphisms), each with its own valid existence. This clone is substantially in agreement with the reference, but a complete review of all prevailing variants is recommended prior to use. [More info](#)

**OTI Annotation:** This clone was engineered to express the complete ORF with an expression tag. Expression varies depending on the nature of the gene.

**Components:** The ORF clone is ion-exchange column purified and shipped in a 2D barcoded Matrix tube containing 10ug of transfection-ready, dried plasmid DNA (reconstitute with 100 ul of water).

**Reconstitution Method:**

1. Centrifuge at 5,000xg for 5min.
2. Carefully open the tube and add 100ul of sterile water to dissolve the DNA.
3. Close the tube and incubate for 10 minutes at room temperature.
4. Briefly vortex the tube and then do a quick spin (less than 5000xg) to concentrate the liquid at the bottom.
5. Store the suspended plasmid at -20°C. The DNA is stable for at least one year from date of shipping when stored at -20°C.

**RefSeq:** [NM\\_032272.3](#), [NP\\_115648.1](#)

**RefSeq Size:** 1828 bp

**RefSeq ORF:** 771 bp

**Locus ID:** 84232

**UniProt ID:** [Q9H063](#)

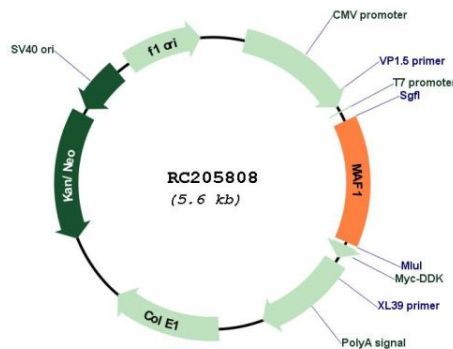
**Cytogenetics:** 8q24.3

**Protein Families:** Transcription Factors

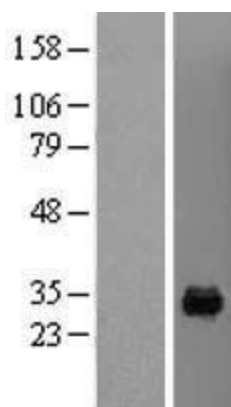
**MW:** 28.9 kDa

**Gene Summary:** This gene encodes a protein that is similar to Maf1, a *Saccharomyces cerevisiae* protein highly conserved in eukaryotic cells. Yeast Maf1 is a negative effector of RNA polymerase III (Pol III). It responds to changes in the cellular environment and represses pol III transcription. Biochemical studies identified the initiation factor TFIIB as a target for Maf1-dependent repression. [provided by RefSeq, Jul 2008]

### Product images:



Circular map for RC205808



Western blot validation of overexpression lysate (Cat# [LY410220]) using anti-DDK antibody (Cat# [TA50011-100]). Left: Cell lysates from untransfected HEK293T cells; Right: Cell lysates from HEK293T cells transfected with RC205808 using transfection reagent MegaTran 2.0 (Cat# [TT210002]).