

Product datasheet for RC205807L1

FAM126A (NM_032581) Human Tagged Lenti ORF Clone

Product data:

Product Type:	Expression Plasmids
Product Name:	FAM126A (NM_032581) Human Tagged Lenti ORF Clone
Tag:	Myc-DDK
Symbol:	FAM126A
Synonyms:	DRCTNNB1A; HCC; HLD5; HYCC1
Mammalian Cell Selection:	None
Vector:	pLenti-C-Myc-DDK (PS100064)
E. coli Selection:	Chloramphenicol (34 ug/mL)
ORF Nucleotide Sequence:	The ORF insert of this clone is exactly the same as(RC205807).
Restriction Sites:	SgfI-MluI
Cloning Scheme:	

Cloning sites used for ORF Shuttling:



* The last codon before the Stop codon of the ORF.

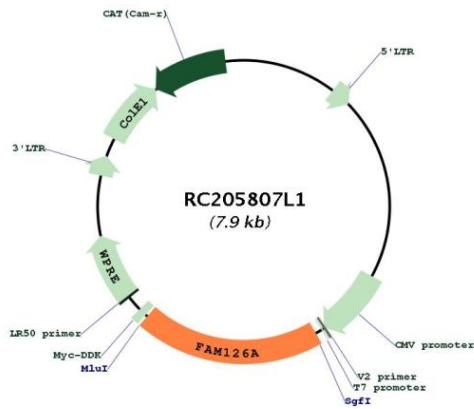
ACCN:	NM_032581
ORF Size:	1563 bp



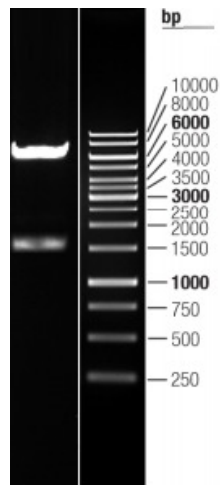
[View online >](#)

OTI Disclaimer:	The molecular sequence of this clone aligns with the gene accession number as a point of reference only. However, individual transcript sequences of the same gene can differ through naturally occurring variations (e.g. polymorphisms), each with its own valid existence. This clone is substantially in agreement with the reference, but a complete review of all prevailing variants is recommended prior to use. More info
OTI Annotation:	This clone was engineered to express the complete ORF with an expression tag. Expression varies depending on the nature of the gene.
Components:	The ORF clone is ion-exchange column purified and shipped in a 2D barcoded Matrix tube containing 10ug of transfection-ready, dried plasmid DNA (reconstitute with 100 ul of water).
Reconstitution Method:	<ol style="list-style-type: none">1. Centrifuge at 5,000xg for 5min.2. Carefully open the tube and add 100ul of sterile water to dissolve the DNA.3. Close the tube and incubate for 10 minutes at room temperature.4. Briefly vortex the tube and then do a quick spin (less than 5000xg) to concentrate the liquid at the bottom.5. Store the suspended plasmid at -20°C. The DNA is stable for at least one year from date of shipping when stored at -20°C.
RefSeq:	NM_032581.2
RefSeq Size:	6165 bp
RefSeq ORF:	1566 bp
Locus ID:	84668
UniProt ID:	Q9BYI3
Cytogenetics:	7p15.3
MW:	57.6 kDa
Gene Summary:	The protein encoded by this gene may play a part in the beta-catenin/Lef signaling pathway. Expression of this gene is down-regulated by beta-catenin. Defects in this gene are a cause of hypomyelination with congenital cataract (HCC). [provided by RefSeq, Oct 2008]

Product images:



Circular map for RC205807L1



Double digestion of RC205807L1 using SgfI and MluI