

Product datasheet for **RC205807**

FAM126A (NM_032581) Human Tagged ORF Clone

Product data:

Product Type:	Expression Plasmids
Product Name:	FAM126A (NM_032581) Human Tagged ORF Clone
Tag:	Myc-DDK
Symbol:	FAM126A
Synonyms:	DRCTNNB1A; HCC; HLD5; HYCC1
Mammalian Cell Selection:	Neomycin
Vector:	pCMV6-Entry (PS100001)
E. coli Selection:	Kanamycin (25 ug/mL)



[View online »](#)

ORF Nucleotide Sequence:

>RC205807 ORF sequence
 Red=Cloning site Blue=ORF Green=Tags(s)

TTTTGTAATACGACTCACTATAGGGCGGCCGGAATTCGTCGACTGGATCCGGTACCGAGGAGATCTGCC
 GCC**CGCATCGCC**

ATGTTTACTTCAGAGAAAGGGTGTGGAGGAATGGTTGTCAGAGTTAAGACATTACCAGAAACATCTT
 TACCAAATTATGCCACAAATTTGAAAGACAAGAGTTCTTTAGTTTCATCTCTATAAAGTTATCCAGGA
 GCCACAAAGTGAGTTGCTAGAACCTGTCTGCACCAGCTCTTTGAATTCTATCGCAGTGGAGAGGAGCAG
 TTGCTTCAATTTACGCTGCAATTTCTCCAGAATAATTTGGTGTACCTTGCAGTCTCAGCCAGCAGAA
 ATGTGCATAGCAGTGGATGCATTGAAGCTCTTCTTAGGGGTTTACAATTTGAAATAGTTGACAAACA
 GGGACATACCAAAGTATTGAGTTTTACGATTCATCTTTATCCAAACCATCTGTATACCATGAACCTTCC
 AGCATTGGGTCCATGGCTCTGACTGAGAGTGCCTATCCAGCATGGTTTGTCAAAGTGGTATACAGTG
 GACCTCATCTCAAAGGGAGATGCTGACAGCACAGAATCGGTTTGAAGTGTGACATTCCTTTTGTGTG
 TTACAATGCTGCCTTAACCTTACATGCCAGTGTCTCTTCAGTCACTGTGTCAAATTTGTTCAAGAATC
 TGTGTTTGTGGATATCCTCGACAACATGTAAAGAAATATAAAGGTATAAGTAGCAGGATACCAGTTTCTT
 CAGGATTCATGGTGCAAATGTTAACAGGGATTTATTTTGCCTTTTATAATGGAGAATGGGATCTAGCTCA
 AAAAGCACTGGATGATATTATATACAGAGCCAGCTAGAATTATATCCAGAGCCATTGCTGGTTGCTAAT
 GCAATAAAGGCTTCATTGCCTCATGGTCCCATGAAATCTAATAAGGAAGGTACAAGGTGATTCAAGTTG
 AAATCACACCAACTTCCTCTCGAATATCAAGAAATGCAGTAACCAGCATGTCAATAAGGGGTATAGGTG
 GAAAAGACATGGAATACAGAATTAACAGGTCAAGAAGAACTGATGGAGATATCTGAAGTTGACGAGGGA
 TTTTATCCAGGGCTGCGTCTAGTACCAGCCAGTCGGGTTTATCAAACAGTAGTCACAATTTAGTAACA
 AGCCAAGTATAGGAAAGAACCACAGACGGTCAGGAGGAAGCAAACCTGGAGGAAAAGAAAAGAACTAC
 AGGGGAATCTTGCAAAGATCACTTTGCTCGAAAACAAACTCAGAGAGCCCAAAGTGAGAATCTTGAGCTT
 CTCTCTTTGAAGAGACTTACTTTAAACAACCAGCCAATCCCTACCTAAGCCTAGTAGCCATGGTTTGCTA
 AGACCGCAGCGACTGTATTTAGTAAATCCTTTGAACAAGTCAGTGGTGTACAGTCCCACATAACCCGTC
 ATCTGCTGTTGGTTGTGGGGCTGGGACAGATGCCAATAGGTTTTCCGCTTGTAGTCTCCAAGAAGAAAAG
 CTTATTTACGTTTCAGAAAGAACTGAACCTCCAATGAAGCATCAATCAGGTACGACAGAGACCTCCTAGTA
 TTAGCATTACTCTGTCCACAGAT

ACGCGTACGCGGCCGCTCGAGCAGAAACTCATCTCAGAAGAGGATCTGGCAGCAAATGATATCCTGGATT
 ACAAGGATGACGACGATAAGGTTTAA

Protein Sequence:

>RC205807 protein sequence
 Red=Cloning site Green=Tags(s)

MFTSEKGVVEEWLSEFKTLPETSLPNYATNLKDKSSLVSSLYKVIQEPQSELLEPVCHQLFEFYRSGEEQ
 LLQFTLQFLPELIWCYLAVSASRNVHSSGCI EALLLVYVLEIVDKQGHKVLFSFIPSLSKPSVYHEPS
 SIGSMALTESALSQHGLSKVVYSGPHPQREMLTAQNRFEVLTFLLLCYNAALTYMPSVSLQSLCQICRSI
 CVCGYPRQHVRYKGISSRIPVSSGFMVQMLTGIYFAFYNGEWDLAQKALDDIIYRAQLELYPEPLLVAN
 AIKASLPHGPMKSNKEGTRCIQVEITPTSSRISRNAVTSMSIRGHRWKRHGNTLGTQEELMEISEVDEG
 FYSRAASSTSQSLSNSSHNCNKPISIGNHRRSGGSKTGGKEKETTGESCKDHFARKQTQRAQSENLEL
 LSLKRLTLTTSQSLPKPSSHGLAKTAATVFSKSFQVSGVTVPHNPSSAVGCGAGTDANRFSACSLQEEK
 LIYVSETELPMKHQSGQQRPPSISITLSTD

TRTRPLEQKLISEEDLAANDILDYKDDDDKV

Chromatograms:

https://cdn.origene.com/chromatograms/mk6199_c09.zip

Restriction Sites:

Sgfl-Mlul

Cloning Scheme:


ACCN: NM_032581

ORF Size: 1563 bp

OTI Disclaimer: The molecular sequence of this clone aligns with the gene accession number as a point of reference only. However, individual transcript sequences of the same gene can differ through naturally occurring variations (e.g. polymorphisms), each with its own valid existence. This clone is substantially in agreement with the reference, but a complete review of all prevailing variants is recommended prior to use. [More info](#)

OTI Annotation: This clone was engineered to express the complete ORF with an expression tag. Expression varies depending on the nature of the gene.

Components: The ORF clone is ion-exchange column purified and shipped in a 2D barcoded Matrix tube containing 10ug of transfection-ready, dried plasmid DNA (reconstitute with 100 ul of water).

- Reconstitution Method:**
1. Centrifuge at 5,000xg for 5min.
 2. Carefully open the tube and add 100ul of sterile water to dissolve the DNA.
 3. Close the tube and incubate for 10 minutes at room temperature.
 4. Briefly vortex the tube and then do a quick spin (less than 5000xg) to concentrate the liquid at the bottom.
 5. Store the suspended plasmid at -20°C. The DNA is stable for at least one year from date of shipping when stored at -20°C.

RefSeq: [NM_032581.4](#)

RefSeq Size: 6165 bp

RefSeq ORF: 1566 bp

Locus ID: 84668

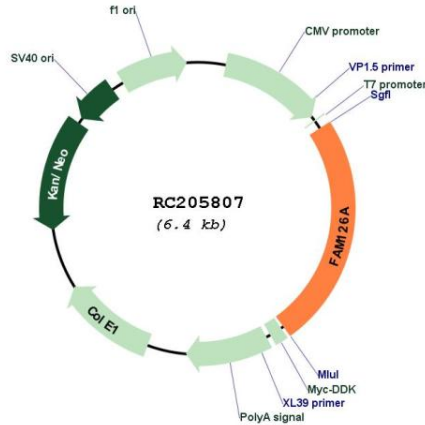
UniProt ID: [Q9BYI3](#)

Cytogenetics: 7p15.3

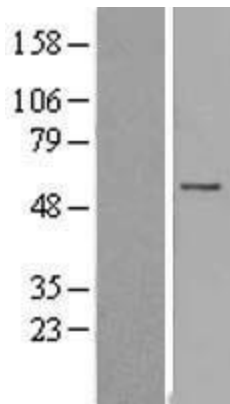
MW: 57.6 kDa

Gene Summary: The protein encoded by this gene may play a part in the beta-catenin/Lef signaling pathway. Expression of this gene is down-regulated by beta-catenin. Defects in this gene are a cause of hypomyelination with congenital cataract (HCC). [provided by RefSeq, Oct 2008]

Product images:



Circular map for RC205807



Western blot validation of overexpression lysate (Cat# [LY403173]) using anti-DDK antibody (Cat# [TA50011-100]). Left: Cell lysates from untransfected HEK293T cells; Right: Cell lysates from HEK293T cells transfected with RC205807 using transfection reagent MegaTran 2.0 (Cat# [TT210002]).