

Product datasheet for **RC205803**

RPS19 (NM_001022) Human Tagged ORF Clone

Product data:

Product Type: Expression Plasmids
Product Name: RPS19 (NM_001022) Human Tagged ORF Clone
Tag: Myc-DDK
Symbol: RPS19
Synonyms: DBA; DBA1; eS19; LOH19CR1; S19
Mammalian Cell Selection: Neomycin
Vector: pCMV6-Entry (PS100001)
E. coli Selection: Kanamycin (25 ug/mL)
ORF Nucleotide Sequence: >RC205803 ORF sequence
Red=Cloning site Blue=ORF Green=Tags(s)

TTTTGTAATACGACTCACTATAGGGCGGCCGGAATTCGTCGACTGGATCCGGTACCGAGGAGATCTGCC
GCC**CGATCGCC**

ATGCTGGAGTTACTGTAAAAGACGTGAACCAGCAGGAGTTCGTCAGAGCTCTGGCAGCCTTCTCAAAA
AGTCCGGGAAGCTGAAAGTCCCCGAATGGGTGGATACCGTCAAGCTGGCCAAGCACAAGAGCTTGCTCC
CTACGATGAGAACTGGTCTACACGCGAGCTGCTCCACAGCGCGGCACCTGTACCTCCGGGTGGCGCT
GGGTTGGCTCCATGACCAAGATCTATGGGGACGTGAGAAAACGGCGTCATGCCAGCCACTTCAGCC
GAGGCTCCAAGAGTGTGGCCCGCGGTCTCCAAGCCCTGGAGGGGCTGAAAATGGTGGAAAAGGACCA
AGATGGCGGCCGCAAACTGACACCTCAGGGACAAGAGATCTGGACAGAATCGCCGGACAGGTGGCAGCT
GCCAACAAGAAGCAT

ACGCGTACGCGGCCGCTCGAGCAGAACTCATCTCAGAAGAGGATCTGGCAGCAAATGATATCCTGGATT
ACAAGGATGACGACGATAAGGTTTAA

Protein Sequence: >RC205803 protein sequence
Red=Cloning site Green=Tags(s)

MPGVTVKDVNQEFVRLAAFLKKSGLKVPWVDTVKLAKHKELAPYDENWFYTRAASTARHLYLRGGA
GVGSMTKIYGGRRQNGVMPSHFSRGSKSVAARRVLQALEGLKMVEKQDGGRRKLTQQQRDLRIAGQVAA
ANKKH

TRTRPLEQKLISEEDLAANDILDYKDDDDKV

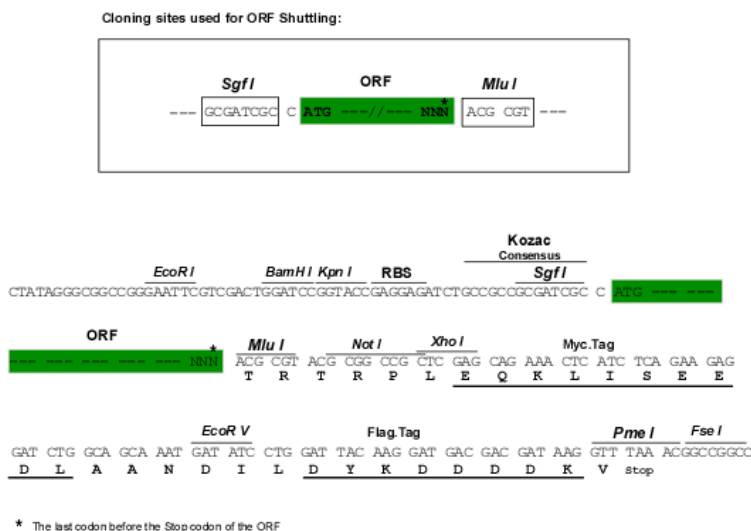
Chromatograms: https://cdn.origene.com/chromatograms/mk6066_c05.zip



[View online >](#)

Restriction Sites: SgfI-MluI

Cloning Scheme:



ACCN: NM_001022

ORF Size: 435 bp

OTI Disclaimer: The molecular sequence of this clone aligns with the gene accession number as a point of reference only. However, individual transcript sequences of the same gene can differ through naturally occurring variations (e.g. polymorphisms), each with its own valid existence. This clone is substantially in agreement with the reference, but a complete review of all prevailing variants is recommended prior to use. [More info](#)

OTI Annotation: This clone was engineered to express the complete ORF with an expression tag. Expression varies depending on the nature of the gene.

Components: The ORF clone is ion-exchange column purified and shipped in a 2D barcoded Matrix tube containing 10ug of transfection-ready, dried plasmid DNA (reconstitute with 100 ul of water).

Reconstitution Method:

1. Centrifuge at 5,000xg for 5min.
2. Carefully open the tube and add 100ul of sterile water to dissolve the DNA.
3. Close the tube and incubate for 10 minutes at room temperature.
4. Briefly vortex the tube and then do a quick spin (less than 5000xg) to concentrate the liquid at the bottom.
5. Store the suspended plasmid at -20°C. The DNA is stable for at least one year from date of shipping when stored at -20°C.

RefSeq: [NM_001022.4](#)

RefSeq Size: 872 bp

RefSeq ORF: 438 bp

Locus ID: 6223

UniProt ID: [P39019](#)

Cytogenetics: 19q13.2

Domains: Ribosomal_S19e

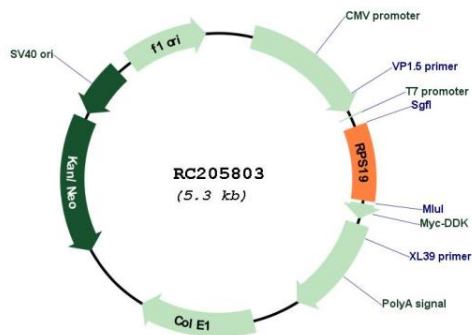
Protein Families: Druggable Genome

Protein Pathways: Ribosome

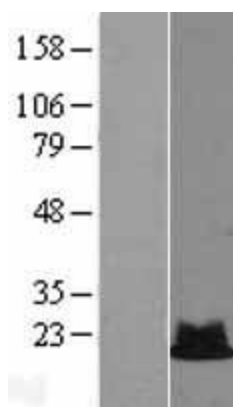
MW: 16.1 kDa

Gene Summary: Ribosomes, the organelles that catalyze protein synthesis, consist of a small 40S subunit and a large 60S subunit. Together these subunits are composed of 4 RNA species and approximately 80 structurally distinct proteins. This gene encodes a ribosomal protein that is a component of the 40S subunit. The protein belongs to the S19E family of ribosomal proteins. It is located in the cytoplasm. Mutations in this gene cause Diamond-Blackfan anemia (DBA), a constitutional erythroblastopenia characterized by absent or decreased erythroid precursors, in a subset of patients. This suggests a possible extra-ribosomal function for this gene in erythropoietic differentiation and proliferation, in addition to its ribosomal function. Higher expression levels of this gene in some primary colon carcinomas compared to matched normal colon tissues has been observed. As is typical for genes encoding ribosomal proteins, there are multiple processed pseudogenes of this gene dispersed through the genome. [provided by RefSeq, Jul 2008]

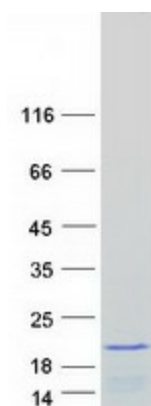
Product images:



Circular map for RC205803



Western blot validation of overexpression lysate (Cat# [LY400401]) using anti-DDK antibody (Cat# [TA50011-100]). Left: Cell lysates from untransfected HEK293T cells; Right: Cell lysates from HEK293T cells transfected with RC205803 using transfection reagent MegaTran 2.0 (Cat# [TT210002]).



Coomassie blue staining of purified RPS19 protein (Cat# [TP305803]). The protein was produced from HEK293T cells transfected with RPS19 cDNA clone (Cat# RC205803) using MegaTran 2.0 (Cat# [TT210002]).