

## Product datasheet for **RC205801L2V**

### SCIN (NM\_033128) Human Tagged ORF Clone Lentiviral Particle

#### Product data:

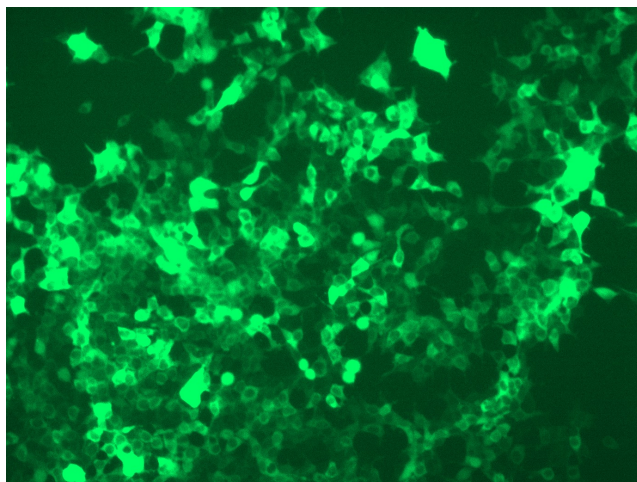
Product Type:	Lentiviral Particles
Product Name:	SCIN (NM_033128) Human Tagged ORF Clone Lentiviral Particle
Symbol:	SCIN
Mammalian Cell Selection:	None
Vector:	pLenti-C-mGFP (PS100071)
Tag:	mGFP
ACCN:	NM_033128
ORF Size:	2145 bp
ORF Nucleotide Sequence:	The ORF insert of this clone is exactly the same as(RC205801).
OTI Disclaimer:	The molecular sequence of this clone aligns with the gene accession number as a point of reference only. However, individual transcript sequences of the same gene can differ through naturally occurring variations (e.g. polymorphisms), each with its own valid existence. This clone is substantially in agreement with the reference, but a complete review of all prevailing variants is recommended prior to use. <a href="#">More info</a>
OTI Annotation:	This clone was engineered to express the complete ORF with an expression tag. Expression varies depending on the nature of the gene.
RefSeq:	<a href="#">NM_033128.1</a>
RefSeq Size:	2586 bp
RefSeq ORF:	1407 bp
Locus ID:	85477
UniProt ID:	<a href="#">Q9Y6U3</a>
Cytogenetics:	7p21.3
Domains:	GEL, Gelsolin
Protein Pathways:	Fc gamma R-mediated phagocytosis, Regulation of actin cytoskeleton
MW:	80.5 kDa



[View online »](#)

**Gene Summary:** SCIN is a Ca(2+)-dependent actin-severing and -capping protein (Zunino et al., 2001 [PubMed 11568009]).[supplied by OMIM, May 2010]

**Product images:**



[RC205801L2] was used to prepare Lentiviral particles using [TR30037] packaging kit. HEK293T cells were transduced with RC205801L2V particle to overexpress human SCIN-mGFP fusion protein.