

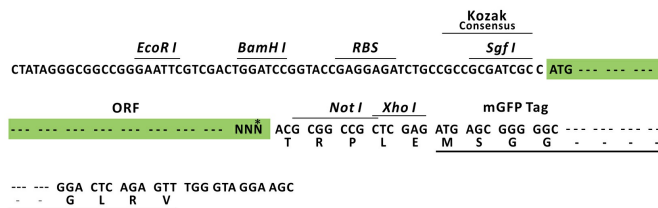
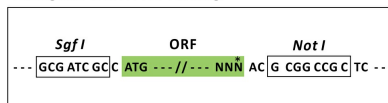
## Product datasheet for RC205800L4

### AP4M1 (NM\_004722) Human Tagged Lenti ORF Clone

#### Product data:

Product Type:	Expression Plasmids
Product Name:	AP4M1 (NM_004722) Human Tagged Lenti ORF Clone
Tag:	mGFP
Symbol:	AP4M1
Synonyms:	CPSQ3; MU-4; MU-ARP2; SPG50
Mammalian Cell Selection:	Puromycin
Vector:	pLenti-C-mGFP-P2A-Puro (PS100093)
E. coli Selection:	Chloramphenicol (34 ug/mL)
ORF Nucleotide Sequence:	The ORF insert of this clone is exactly the same as(RC205800).
Restriction Sites:	SgfI-NotI
Cloning Scheme:	

Cloning sites used for ORF Shuttling:



\* The last codon before the Stop codon of the ORF.



[View online »](#)



<b>Locus ID:</b>	9179
<b>UniProt ID:</b>	<a href="#">O00189</a>
<b>Cytogenetics:</b>	7q22.1
<b>Domains:</b>	Adap_comp_sub
<b>Protein Pathways:</b>	Lysosome
<b>MW:</b>	50 kDa
<b>Gene Summary:</b>	This gene encodes a subunit of the heterotetrameric AP-4 complex. The encoded protein belongs to the adaptor complexes medium subunits family. This AP-4 complex is involved in the recognition and sorting of cargo proteins with tyrosine-based motifs from the trans-golgi network to the endosomal-lysosomal system. [provided by RefSeq, Jul 2008]