

Product datasheet for **RC205797**

PLTP (NM_006227) Human Tagged ORF Clone

Product data:

Product Type:	Expression Plasmids
Product Name:	PLTP (NM_006227) Human Tagged ORF Clone
Tag:	Myc-DDK
Symbol:	PLTP
Synonyms:	BPIFE; HDLCQ9
Mammalian Cell Selection:	Neomycin
Vector:	pCMV6-Entry (PS100001)
E. coli Selection:	Kanamycin (25 ug/mL)



[View online »](#)

ORF Nucleotide Sequence:

>RC205797 ORF sequence
 Red=Cloning site Blue=ORF Green=Tags(s)

TTTTGTAATACGACTCACTATAGGGCGGCCGGAATTCGTCGACTGGATCCGGTACCGAGGAGATCTGCC
 GCC**CGGATCGCC**

ATGGCCCTCTTCGGGCCCTCTTCTAGCGCTGCTGGCAGGCGCACATGCAGTGTCCAGGCTGCAAGA
 TCCGCGTCACCTCCAAGGCGCTGGAGCTGGTGAAGCAGGAGGGCTGCGCTTCTGGAGCAAGAGCTGGA
 GACTATACCACTTCGGACCTGCGGGGCAAGAAGGCCACTTCTACTACAACATCTCTGAGGTGAAGGTC
 ACAGAGCTGCAACTGACATCTTCCGAGCTCGATTTCCAGCCACAGCAGGAGCTGATGCTTCAAATCACCA
 ATGCCCTCTTGGGGCTGCGCTTCCGAGACAGCTGCTCTACTGGTTCTTCTATGATGGGGCTACATCAA
 CGCCTCAGCTGAGGGTGTGTCCATCCGCACTGGTCTGGAGCTCTCCGGGATCCCCTGGACGGATGAAA
 GTGTCCAATGTCTCTGCCAGGCTCTGTCTCCAGAATGCACGCGGCCTTCGGGGAAACCTCAAGAAGG
 TGTATGATTTTCTCTCCACGTTCCACTCAGGGATGCGCTTCTCTCAACCAGCAGATCTGCCCTGT
 CCTCTACCACGCAGGGACGGTCTGCTCAACTCCCTCCTGGACACCGTGCCTGTGCGCAGTTCTGTGGAC
 GAGCTTGTGGCATTGACTATCCCTCATGAAGGATCCTGTGGCTTCCACCAGCAACCTGGACATGGACT
 TCCGGGGGGCCTTCTTCCCCCTGACTGAGAGGAACTGGAGCCTCCCAACCGGGCAGTGGAGCCCAGCT
 GCAGGAGGAAGAGCGGATGGTGTATGTGGCCTTCTCTGAGTTCTTCTTGGACTCTGCCATGGAGAGCTAC
 TTCCGGGCGGGGGCCCTGCAGCTGTTGCTGGTGGGGGACAAGGTGCCCCACGACCTGGACATGCTGCTGA
 GGGCCACCTACTTTGGGAGCATTGTCTGCTGAGCCAGCAGTGATTGACTCCCCATTGAAGCTGGAGCT
 GCGGGTCTGGCCCCACCGCGTGCACCATCAAGCCCTTGGCACCACCATCTCTGTCACTGCTAGCGTC
 ACCATTGCCCTGGTCCCACCAGACCAGCCTGAGGTCCAGCTGTCCAGCATGACTATGGACGCCCTCTCA
 GCGCCAAGATGGCTCTCCGGGGGAAGCCCTGCGCAGCAGCTGGACCTGCGCAGGTTCCGAATCTATTC
 CAACCATTCTGCACTGGAGTCGCTGGCTCTGATCCCATTACAGGCCCTCTGAAGACCATGCTGCAGATT
 GGGGTGATGCCCATGCTCAATGAGCGGACCTGGCGTGGGGTGCAGATCCCCTACCTGAGGGCATCAACT
 TTGTGCATGAGGTGGTGCAGAACCATGCGGGATTCTCACCATCGGGGCTGATCTCCACTTTGCCAAGG
 GCTGCGAGAGGTGATTGAGAAGAACCGGCTGCTGATGTCAGGGCGTCCACTGCCCCACACCGTCCACA
 GCAGCTGTC

ACGCGTACGCGGGCCGCTCGAGCAGAACTCATCTCAGAAGAGGATCTGGCAGCAAATGATATCTGGATT
 ACAAGGATGACGACGATAAGGTTTAA

Protein Sequence:

>RC205797 protein sequence
 Red=Cloning site Green=Tags(s)

MALFGALFLALLAGAHAVFPGCKIRVTSKALELVKQEGRLFLEQELETITIPDLRGKEGHFYNNISEVKV
 TELQLTSELDLFPQQLMLQITNASLGLRFRQLLYWFFYDGGYINASAEGVSIRTGLELSRDPAGRMK
 VSNVSCQASVSRMHAFFGGTFKKVYDFLSTFITSGMRFLLNQQICPVLYHAGTVLLNSLLDTPVVRSSVD
 ELVGDIDYSLMKDPVASTSNLDMDFRGAFFPLTERNWSPNRAVEPQLQEEERMVYVAFSEFFFDAMESY
 FRAGALQLLLVGDKVPDLDMLLRATYFGSIVLLSPAVIDSPLKLELRLVAPPRTIKPSGTTISVTASV
 TIALVPPDQPEVQLSSMTMDARLSAKMALRGKALRTQLDLRRFRIYSNHSALSLALIPLQAPLKTMLQI
 GVMPMLNERTWRGVQIPLPEGINFVHEVVTNHAGFLTIGADLHFAKGLREVIEKNRPADVRASTAPTST
 AAV

TRTRPLEQKLISEEDLAANDILDYKDDDDKV

Chromatograms:

https://cdn.origene.com/chromatograms/mk6138_h10.zip

Restriction Sites:

Sgfl-Mlul

Cloning Scheme:

ACCN: NM_006227

ORF Size: 1479 bp

OTI Disclaimer: The molecular sequence of this clone aligns with the gene accession number as a point of reference only. However, individual transcript sequences of the same gene can differ through naturally occurring variations (e.g. polymorphisms), each with its own valid existence. This clone is substantially in agreement with the reference, but a complete review of all prevailing variants is recommended prior to use. [More info](#)

OTI Annotation: This clone was engineered to express the complete ORF with an expression tag. Expression varies depending on the nature of the gene.

Components: The ORF clone is ion-exchange column purified and shipped in a 2D barcoded Matrix tube containing 10ug of transfection-ready, dried plasmid DNA (reconstitute with 100 ul of water).

Reconstitution Method:

1. Centrifuge at 5,000xg for 5min.
2. Carefully open the tube and add 100ul of sterile water to dissolve the DNA.
3. Close the tube and incubate for 10 minutes at room temperature.
4. Briefly vortex the tube and then do a quick spin (less than 5000xg) to concentrate the liquid at the bottom.
5. Store the suspended plasmid at -20°C. The DNA is stable for at least one year from date of shipping when stored at -20°C.

RefSeq: [NM_006227.4](#)
RefSeq Size: 2100 bp

RefSeq ORF: 1482 bp

Locus ID: 5360

UniProt ID: [P55058](#)
Cytogenetics: 20q13.12

Domains: BPI1

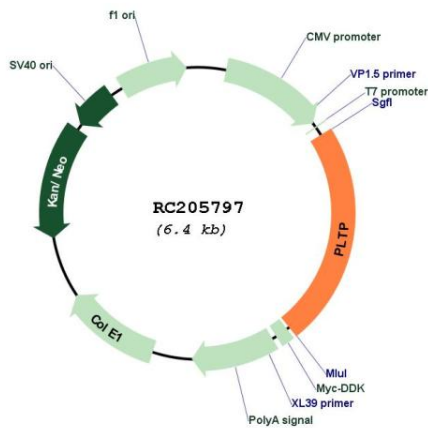
Protein Families: Druggable Genome, Secreted Protein

Protein Pathways: PPAR signaling pathway

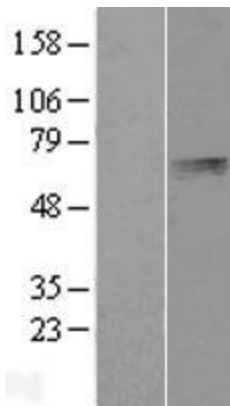
MW: 54.7 kDa

Gene Summary: The protein encoded by this gene is one of at least two lipid transfer proteins found in human plasma. The encoded protein transfers phospholipids from triglyceride-rich lipoproteins to high density lipoprotein (HDL). In addition to regulating the size of HDL particles, this protein may be involved in cholesterol metabolism. At least two transcript variants encoding different isoforms have been found for this gene. [provided by RefSeq, Jul 2008]

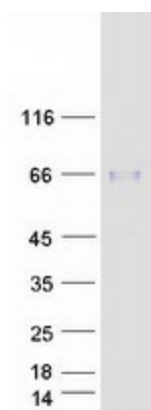
Product images:



Circular map for RC205797



Western blot validation of overexpression lysate (Cat# [LY401875]) using anti-DDK antibody (Cat# [TA50011-100]). Left: Cell lysates from untransfected HEK293T cells; Right: Cell lysates from HEK293T cells transfected with RC205797 using transfection reagent MegaTran 2.0 (Cat# [TT210002]).



Coomassie blue staining of purified PLTP protein (Cat# [TP305797]). The protein was produced from HEK293T cells transfected with PLTP cDNA clone (Cat# RC205797) using MegaTran 2.0 (Cat# [TT210002]).