

Product datasheet for **RC205796**

ERCC6L2 (NM_020207) Human Tagged ORF Clone

Product data:

Product Type:	Expression Plasmids
Product Name:	ERCC6L2 (NM_020207) Human Tagged ORF Clone
Tag:	Myc-DDK
Symbol:	ERCC6L2
Synonyms:	BMFS2; C9orf102; HEBO; RAD26L; SR278
Mammalian Cell Selection:	Neomycin
Vector:	pCMV6-Entry (PS100001)
E. coli Selection:	Kanamycin (25 ug/mL)



[View online »](#)

ORF Nucleotide Sequence:

>RC205796 ORF sequence
 Red=Cloning site Blue=ORF Green=Tags(s)

TTTTGTAATACGACTCACTATAGGGCGGCCGGAATTCGTCGACTGGATCCGGTACCGAGGAGATCTGCC
 GCC**CGGATCGCC**

ATGAAATGTTCAATGAGAAAGTTGTTAATCAAGAGCAGTCGATGAATCAATGGATAAATTTTAGATG
 GGGTTCAGGAAGTGGCTTATATCACTCAAACAGAATGTAATTGGATCGAGCAAAGCTGAAATCACAT
 GAGCCGATGGGCAGCACATGACGTATTTGAGTTGAAGCAGTTTTCTCAGCTGCCTGCTAACATAGCTGTT
 TGCAGTCTAAGACATATAAAGAAAAAGTGGATGCAGATACATTGCCACACACAAAGAAAGGCCAGCAAC
 CTAGTGAAGGCAGCATTTCACCTCCTTTACATTTCAAATCCTGTAACCAGAAGAAGAAAAAGTCTA
 CCATACAAACCAGACCACCTTCATAATTGGAGAAAACACAAAAGGAATCCGCAGAAAACAATTTGAAGAA
 ATGGCCTCTATTTAACTCGTCTTCTGTAACGAATTTGCTAACATATAACCAATGCCACATCAGAAG
 AACGACAGAAAATGCTAAGAGACTTTTATGCTTCTCAATATCCAGAGGTAAGAAATTTTTGTGGATTC
 TGTGTCACAATCAACAATTCCTTTGAGAAAGGAGAGCAGCGCACCCGGAAGAAATCTGATAAAAGA
 GAATCTCTATAAAACCAAGGCTGTGAGATTCTGAAACCTTGCAATTTAAAGATTCTACCAACAAAATTT
 CTCAAGTTTGAGCCTAAAACATATAAAGAAAAATCAGTTAAGTTTCAGAATCATATTTCTATAGAGA
 AGAGGTGTTTTTAAATGATGCAGAACTAAGAAATCACCTGTTAGTTCTACTCAAGAGATTGACAGTGGG
 AAAACAGCCAGGCATCCGAAGATACTGTGACATCCCCTTCTCTGAACAGTGAGTCTGAAACACGTGAGA
 GAAGGTTAGAAAATACCATGAAAGACCAACAGGACCTCACAAGAACGGGCATTTCAAGAAAAAGACCCCT
 TCTCAAATTGAAAAACAAAAGATAGAAAATCCAGTGTGAAAAATACTCTGTGATAAGCTTACTTGGT
 GATACCTCTATTCTTGATGACCTTTTTAAAAGTCATGGGAACAGTCCCACACAACGCAAAAGAAAGTTC
 TTTCAGGGCCCATGAAAAAGCAAAACAGAGACCAAAAGATTTCTGGGACATCTGAATGAGCAGCAAG
 TGAGAGCTTAGTAAACTCACAGACTTGGCAGTAATAGAGACTCTGTGTGAAAAAGCACCTCTAGCAGCA
 CCCTTTAAAAGGAGAGAAGGCCAGCAACTTCTTTGAAATCAATGAGAAATTTTTATGGAAGAAAT
 TTAGCCCAAGTGATACAGATGAAAACGCAACCAATACACAGAGTACCACA

ACGCGTACGCGGCCGCTCGAGCAGAAACTCATCTCAGAAGAGGATCTGGCAGCAAATGATATCCTGGATT
 ACAAGGATGACGACGATAAGGTTTAA

Protein Sequence:

>RC205796 protein sequence
 Red=Cloning site Green=Tags(s)

MKCSNEKVVNQEQSYESMDKFLDGVQEVAYIHSNQNVIGSSKAENHMSRWAHDFELKQFSQLPANIAV
 CSSKTYKEKVDADTLPHTKKGQPSEGSISLPLYSISNPVNQKKKVVYHTNQTTFIIGETPKGIRRKQFEE
 MASYFNSSSVNEFAKHITNATSEERQKMLRDFYASQYPEVKEFFVDSVSQFNNSSFEEKGEQRTRKSDKR
 ESLIKPRLSDSETLSFKDSTNKISQVCSLKTYKRKSVKFNHISYREEVFNDAETKSPVSSTQEIDSG
 KNSQASEDTVTSRSLNSESETRRRELENTMKDQDLTRTGISRKEPLLKLENKKIENPVLENTSVISLLG
 DTSILDDLFSKSHGNSPTQLPKVLSGPMEKAKQRPKDFWDILNEQNDESLSKLTLAVIETLCEKAPLAA
 PFKRREEPATSLWKSNEKFLWKKFSPSDTDENATNTQSTT

TRTRPLEQKLISEEDLAANDILDYKDDDDKV

Chromatograms:

https://cdn.origene.com/chromatograms/mk6326_c10.zip

Restriction Sites:

Sgfl-Mlul

Cloning Scheme:


ACCN: NM_020207

ORF Size: 1380 bp

OTI Disclaimer: The molecular sequence of this clone aligns with the gene accession number as a point of reference only. However, individual transcript sequences of the same gene can differ through naturally occurring variations (e.g. polymorphisms), each with its own valid existence. This clone is substantially in agreement with the reference, but a complete review of all prevailing variants is recommended prior to use. [More info](#)

OTI Annotation: This clone was engineered to express the complete ORF with an expression tag. Expression varies depending on the nature of the gene.

Components: The ORF clone is ion-exchange column purified and shipped in a 2D barcoded Matrix tube containing 10ug of transfection-ready, dried plasmid DNA (reconstitute with 100 ul of water).

- Reconstitution Method:**
1. Centrifuge at 5,000xg for 5min.
 2. Carefully open the tube and add 100ul of sterile water to dissolve the DNA.
 3. Close the tube and incubate for 10 minutes at room temperature.
 4. Briefly vortex the tube and then do a quick spin (less than 5000xg) to concentrate the liquid at the bottom.
 5. Store the suspended plasmid at -20°C. The DNA is stable for at least one year from date of shipping when stored at -20°C.

RefSeq: [NM_020207.1](#), [NP_064592.1](#)

RefSeq Size: 10324 bp

RefSeq ORF: 4653 bp

Locus ID: 375748

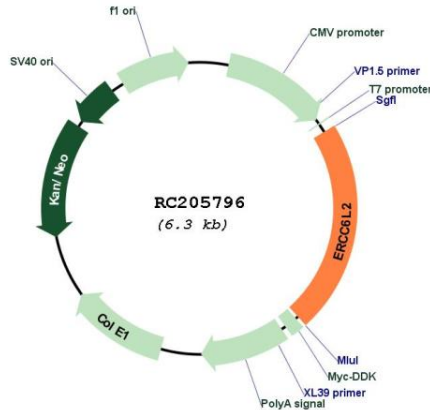
UniProt ID: [Q5T890](#)

Cytogenetics: 9q22.32

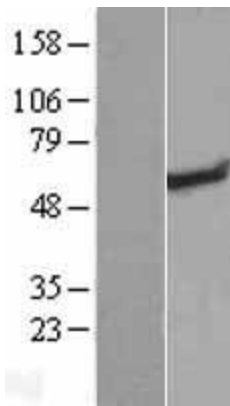
MW: 52.6 kDa

Gene Summary: This gene encodes a member of the Snf2 family of helicase-like proteins. The encoded protein may play a role in DNA repair and mitochondrial function. Mutations in this gene have been associated with bone marrow failure syndrome 2. Alternatively spliced transcript variants that encode different protein isoforms have been described. [provided by RefSeq, Apr 2014]

Product images:



Circular map for RC205796



Western blot validation of overexpression lysate (Cat# [LY412592]) using anti-DDK antibody (Cat# [TA50011-100]). Left: Cell lysates from untransfected HEK293T cells; Right: Cell lysates from HEK293T cells transfected with RC205796 using transfection reagent MegaTran 2.0 (Cat# [TT210002]).