

Product datasheet for **RC205794**

CHRM1 (NM_000738) Human Tagged ORF Clone

Product data:

Product Type:	Expression Plasmids
Product Name:	CHRM1 (NM_000738) Human Tagged ORF Clone
Tag:	Myc-DDK
Symbol:	CHRM1
Synonyms:	HM1; M1; M1R
Mammalian Cell Selection:	Neomycin
Vector:	pCMV6-Entry (PS100001)
E. coli Selection:	Kanamycin (25 ug/mL)



[View online »](#)

ORF Nucleotide Sequence:

>RC205794 representing NM_000738
 Red=Cloning site Blue=ORF Green=Tags(s)

TTTTGTAATACGACTCACTATAGGGCGGCCGGAATTCGTCGACTGGATCCGGTACCGAGGAGATCTGCC
 GCC**GCGATCGCC**

ATGAACACTTCAGCCCCACTGTCTCAGCCCCAACATCACCGTCTGGCACCAGGAAAGGGTCCCTGGC
 AAGTGGCCTTCATTGGGATCACACGGGCTCCTGTCTAGCCACAGTGACAGGCAACCTGCTGGTACT
 CATCTCTTTCAAGGTCAACACGGAGCTCAAGACAGTCAATAACTACTTCTGCTGAGCCTGGCCTGTGCT
 GACCTCATCATCGGTACCTTCTCCATGAACCTCTATACCACGTACCTGCTCATGGCCACTGGGCTCTGG
 GCACGCTGGCTTGTGACCTCTGGCTGGCCCTGGACTATGTGGCCAGCAATGCCTCCGTATGAATCTGCT
 GCTCATCAGCTTTGACCGCTACTTCTCCGTGACTCGGCCCTGAGCTACCGTGCCAAGCGCACACCCCGC
 CGGGCAGCTCTGATGATCGGCCCTGGCTGGTGGTTTCTTTGTGCTCTGGGCCAGCCATCCTCTTCT
 GGCAGTACCTGGTAGGGAGCGGACAGTGTAGCTGGCAGTGTACATCCAGTTCCTCTCCAGCCAT
 CATCACCTTTGGCACAGCCATGGCTGCCTTCTACCTCCCTGTACAGTATGTGCAGCTCTACTGGCGC
 ATCTACCGGGAGACAGAGAACCAGACGGGAGCTGGCAGCCCTTCAGGGCTCCGAGACGCCAGGCAAG
 GGGGTGGCAGCAGCAGCAGCTCAGAGAGGTCTCAGCCAGGGGCTGAGGGCTCACCAGAGACTCCTCCAGG
 CCGCTGCTGTCGCTGCTGCCGGGCCCCAGGCTGCTGCAGGCCTACAGCTGGAAGGAAGAAGAGGAAGAG
 GACGAAGGCTCCATGGAGTCCCTCACATCCTCAGAGGGAGAGGAGCTGGCTCCGAAGTGGTGATCAAGA
 TGCCAATGGTGGACCCCGAGGCACAGGCCCCCAACAGCAGCCCAACGGAGCTCCCAAATACAGTCAA
 GAGGCCGACTAAGAAAGGGCGTGATCGAGCTGGCAAGGGCCAGAAGCCCGTGGAAAGGAGCAGCTGGCC
 AAGCGGAAGACCTTCTCGCTGGTCAAGGAGAAGAAGCGGCTCGGACCTGAGTGCCATCCTCCTGGCCT
 TCATCCTCACCTGGACACCGTACAACATCATGGTGTGCTGGTGTCCACCTTCTGCAAGGACTGTGTTCCCGA
 GACCTGTGGGAGCTGGGCTACTGGCTGTGCTAGTCAACAGCACCATCAACCCCATGTGCTACGCACTC
 TGCAACAAAGCCTTCCGGGACACCTTTCGCTGCTGCTGCTTTGCCGCTGGGACAAGAGACGCTGGCGCA
 AGATCCCCAAGCGCCCTGGCTCCGTGCACCGCACTCCCTCCGCCAATGC

ACGCGTACGCGGCCGCTCGAGCAGAACTCATCTCAGAAGAGGATCTGGCAGCAAATGATATCCTGGATT
 ACAAGGATGACGACGATAAGGTTTAA

Protein Sequence:

>RC205794 representing NM_000738
 Red=Cloning site Green=Tags(s)

MNTSAPPAVSPNITVLPAGKGPWQVAFIGITTLGSLATVTGNLLVLISFKVNTLKTVNNYFLLSLACA
 DLIIGTFSMNLYTTYLLMGHWALGTLACDLWLALDYVASNASVMNLLISFDRYFSVTRPLSYRAKRTPR
 RAALMIGLAWLVSFVLWAPAILFWQYLVGERTVLAGQCYIQFLSQPIITFGTAMAAFYLPVTVMCTLYWR
 IYRETE NRARELAALQGSETPGKGGSSSSSERSQPGAEGSPETPPGRCCRCRAPRLLQAYSWKEEEEEE
 DEGSMSLTSSEGEPPGSEVVIKMPMVDPEAQAPTKQPPRSSPNTVKRPTKKGRDRAGKGQKPRGKEQLA
 KRKTFSLVKEKKAARTLSAILLAFILTWTPYINIMVLVSTFCKDCVPETLWELGYWLCYVNSTINPMCYAL
 CNKAFRDTRFRLLLCRWDKRRWRKIPKRPGSVHRTPSRQC

TRTRPLEQKLISEEDLAANDILDYKDDDDKV

Chromatograms:

https://cdn.origene.com/chromatograms/mg2565_h06.zip

Restriction Sites:

Sgfl-Mlul

Cloning Scheme:


ACCN: NM_000738

ORF Size: 1380 bp

OTI Disclaimer: The molecular sequence of this clone aligns with the gene accession number as a point of reference only. However, individual transcript sequences of the same gene can differ through naturally occurring variations (e.g. polymorphisms), each with its own valid existence. This clone is substantially in agreement with the reference, but a complete review of all prevailing variants is recommended prior to use. [More info](#)

OTI Annotation: This clone was engineered to express the complete ORF with an expression tag. Expression varies depending on the nature of the gene.

Components: The ORF clone is ion-exchange column purified and shipped in a 2D barcoded Matrix tube containing 10ug of transfection-ready, dried plasmid DNA (reconstitute with 100 ul of water).

- Reconstitution Method:**
1. Centrifuge at 5,000xg for 5min.
 2. Carefully open the tube and add 100ul of sterile water to dissolve the DNA.
 3. Close the tube and incubate for 10 minutes at room temperature.
 4. Briefly vortex the tube and then do a quick spin (less than 5000xg) to concentrate the liquid at the bottom.
 5. Store the suspended plasmid at -20°C. The DNA is stable for at least one year from date of shipping when stored at -20°C.

RefSeq: [NM_000738.3](#)

RefSeq Size: 2863 bp

RefSeq ORF: 1383 bp

Locus ID: 1128

UniProt ID: [P11229](#)

Cytogenetics: 11q12.3

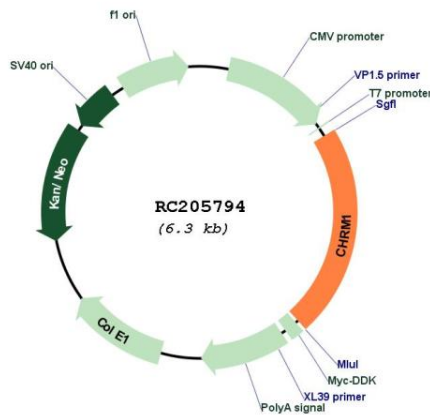
Protein Families: Druggable Genome, GPCR, Transmembrane

Protein Pathways: Calcium signaling pathway, Neuroactive ligand-receptor interaction, Regulation of actin cytoskeleton

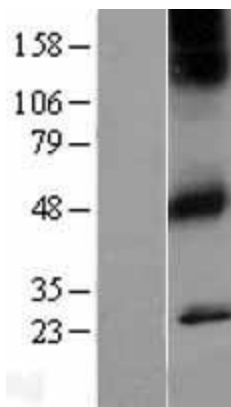
MW: 51.2 kDa

Gene Summary: The muscarinic cholinergic receptors belong to a larger family of G protein-coupled receptors. The functional diversity of these receptors is defined by the binding of acetylcholine and includes cellular responses such as adenylate cyclase inhibition, phosphoinositide degeneration, and potassium channel mediation. Muscarinic receptors influence many effects of acetylcholine in the central and peripheral nervous system. The muscarinic cholinergic receptor 1 is involved in mediation of vagally-induced bronchoconstriction and in the acid secretion of the gastrointestinal tract. The gene encoding this receptor is localized to 11q13. [provided by RefSeq, Jul 2008]

Product images:



Circular map for RC205794



Western blot validation of overexpression lysate (Cat# [LY400263]) using anti-DDK antibody (Cat# [TA50011-100]). Left: Cell lysates from untransfected HEK293T cells; Right: Cell lysates from HEK293T cells transfected with RC205794 using transfection reagent MegaTran 2.0 (Cat# [TT210002]).