

Product datasheet for **RC205789**

THAP6 (NM_144721) Human Tagged ORF Clone

Product data:

Product Type: Expression Plasmids
Product Name: THAP6 (NM_144721) Human Tagged ORF Clone
Tag: Myc-DDK
Symbol: THAP6
Mammalian Cell Selection: Neomycin
Vector: pCMV6-Entry (PS100001)
E. coli Selection: Kanamycin (25 ug/mL)
ORF Nucleotide Sequence: >RC205789 ORF sequence
Red=Cloning site Blue=ORF Green=Tags(s)

TTTTGTAATACGACTCACTATAGGGCGGCCGGAATTCGTCGACTGGATCCGGTACCGAGGAGATCTGCC
GCC**CGATCGCC**

ATGGTGAATGCTGCTCCGCCATTGGATGTGCTTCTCGCTGCTTGCCAAATTCGAAGTTAAAAGGACTGA
CATTTCACGTATCCCCACAGATGAAAACATCAAAGGAAATGGGATTAGCAATGAAAAGACTTGATGT
GAATGCAGCCGGCATTGGGAGCCTAAAAAGGAGATGTGTTGTGTTTCGAGGCACCTTAAGAAGACAGAT
TTTGACAGAAGTGCTCCAAATATTAACCTGAAACCTGGAGTCATACCTTCTATCTTTGATTCTCCATATC
ACCTACAGGGGAAAAGAGAAAACTTCATTGTAGAAAAAACTCACCCCAAACCGTTCCAGCCACTAA
CTACAATCACCATCTTGTGGTGTCTCCTCATGTATTGAAGAATCCAATCCCAGTTCATTTTTGAACAT
AGCTACAGTGTAATGGACAGTCCAAAGAACTAAGCATAAATTAGATCATGTGATCGGGCAGCTAGAGG
ATACAAAGGAAAGTCTACGGAATGTTTTAGACCGAGAAAAACGTTTTTCAGAAATCATTGAGGAAGACAAT
CAGGGAATTAAGGATGAATGTCTGATCAGCCAAGAAACAGCAAATAGACTGGACACTTTCTGTTGGGAC
TGTTGTCAGGAGAGCATAGAACAGGACTATATTCA

ACGCGTACGCGGCCGCTCGAGCAGAACTCATCTCAGAAGAGGATCTGGCAGCAAATGATATCTGGATT
ACAAGGATGACGACGATAAGGTTTAA

Protein Sequence: >RC205789 protein sequence
Red=Cloning site Green=Tags(s)

MVKCCSAIGCASRCLPNSKLGKLFHFVPTDENIKRKWVLMKRLDVNAAGIWEPKKGDVLCRHFKKT
FDRSAPNIKLPKGVIPSIFDSPYHLQKREKLHCRKNFTLKTVPATNYNHHLVGASSCIEEFQSQFIFEH
SYSVMDSPPKLLKHLKLDHVI GELEDTKESLRNVLDREKRFQKSLRKTIRELKDDECLISQETANRLDTFCWD
CCQESIEQDYIS

TRTRPLEQKLI SEEDLAANDILDYKDDDDKV



[View online »](#)

Chromatograms: https://cdn.origene.com/chromatograms/mk6327_g06.zip

Restriction Sites: SgfI-MluI

Cloning Scheme:



ACCN: NM_144721

ORF Size: 666 bp

OTI Disclaimer: The molecular sequence of this clone aligns with the gene accession number as a point of reference only. However, individual transcript sequences of the same gene can differ through naturally occurring variations (e.g. polymorphisms), each with its own valid existence. This clone is substantially in agreement with the reference, but a complete review of all prevailing variants is recommended prior to use. [More info](#)

OTI Annotation: This clone was engineered to express the complete ORF with an expression tag. Expression varies depending on the nature of the gene.

Components: The ORF clone is ion-exchange column purified and shipped in a 2D barcoded Matrix tube containing 10ug of transfection-ready, dried plasmid DNA (reconstitute with 100 ul of water).

Reconstitution Method:

1. Centrifuge at 5,000xg for 5min.
2. Carefully open the tube and add 100ul of sterile water to dissolve the DNA.
3. Close the tube and incubate for 10 minutes at room temperature.
4. Briefly vortex the tube and then do a quick spin (less than 5000xg) to concentrate the liquid at the bottom.
5. Store the suspended plasmid at -20°C. The DNA is stable for at least one year from date of shipping when stored at -20°C.

RefSeq: [NM_144721.6](#)

RefSeq Size: 3578 bp

RefSeq ORF: 669 bp

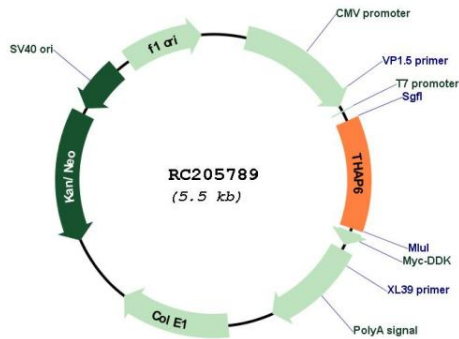
Locus ID: 152815

UniProt ID: Q8TBB0

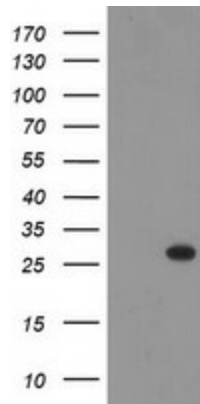
Cytogenetics: 4q21.1

MW: 25.7 kDa

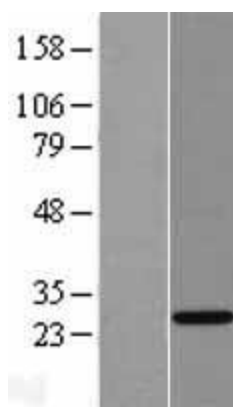
Product images:



Circular map for RC205789



HEK293T cells were transfected with the pCMV6-ENTRY control (Cat# [PS100001], Left lane) or pCMV6-ENTRY THAP6 (Cat# RC205789, Right lane) cDNA for 48 hrs and lysed. Equivalent amounts of cell lysates (5 ug per lane) were separated by SDS-PAGE and immunoblotted with anti-THAP6 (Cat# [TA800256]). Positive lysates [LY408149] (100ug) and [LC408149] (20ug) can be purchased separately from OriGene.



Western blot validation of overexpression lysate (Cat# [LY408149]) using anti-DDK antibody (Cat# [TA50011-100]). Left: Cell lysates from untransfected HEK293T cells; Right: Cell lysates from HEK293T cells transfected with RC205789 using transfection reagent MegaTran 2.0 (Cat# [TT210002]).