

Product datasheet for **RC205786**

CD32A (FCGR2A) (NM_021642) Human Tagged ORF Clone

Product data:

Product Type:	Expression Plasmids
Product Name:	CD32A (FCGR2A) (NM_021642) Human Tagged ORF Clone
Tag:	Myc-DDK
Symbol:	CD32A
Synonyms:	CD32; CD32A; CDw32; FCG2; FcGR; FCGR2; FCGR2A1; IGFR2
Mammalian Cell Selection:	Neomycin
Vector:	pCMV6-Entry (PS100001)
E. coli Selection:	Kanamycin (25 ug/mL)
ORF Nucleotide Sequence:	>RC205786 representing NM_021642 Red=Cloning site Blue=ORF Green=Tags(s)

TTTTGTAATACGACTCACTATAGGGCGGCCGGAATTCGTCGACTGGATCCGGTACCGAGGAGATCTGCC
GCC**CGGATCGCC**

ATGACTATGGAGACCCAAATGTCTCAGAATGTATGTCCCAGAAACCTGTGGCTGCTTCAACCATTGACAG
TTTTGCTGCTGGCTTCTGCAGACAGTCAAGCTGTCCCCAAAGGCTGTGCTGAAACTTGAGCCCC
GTGGATCAACGTGCTCCAGGAGGACTCTGTGACTCTGACATGCCAGGGGGCTCGCAGCCCTGAGAGCGAC
TCCATTCAGTGGTCCACAATGGGAATCTCATTCCCACCCACACGCAGCCAGCTACAGGTTCAAGGCCA
ACAACAATGACAGCGGGGAGTACAGTGCCAGACTGGCCAGACCAGCCTCAGCGACCCTGTGCATCTGAC
TGTGCTTTCCGAATGGCTGGTGTCCAGACCCCTCACCTGGAGTTCAGGAGGGAGAAACCATCATGCTG
AGGTGCCACAGCTGGAAGGACAAGCCTCTGGTCAAGGTACATTCTCCAGAATGAAAAATCCCAGAAAT
TCTCCCGTTTGGATCCCACCTTCTCCATCCCACAAGCAAACCACAGTCACAGTGGTGATTACCACTGCAC
AGGAAACATAGGCTACACGCTGTCTCATCCAAGCCTGTGACCATCACTGTCCAAGTGCCAGCATGGGC
AGCTCTTACCAATGGGGATCATTGTGGCTGTGGTCATTGCGACTGCTGTAGCAGCCATTGTTGTGCTG
TAGTGGCCTTGATCTACTGCAGGAAAAAGCGGATTCAGCCAATCCACTGATCCTGTGAAGGCTGCCCA
ATTTGAGCCACCTGGACGTCAAATGATTGCCATCAGAAAGAGACAACCTGAAGAAACCAACAATGACTAT
GAAACAGCTGACGGCGGCTACATGACTTGAACCCAGGGCACCTACTGACGATGATAAAAAATCTACC
TGACTCTTCTCCCAACGACCATGTCAACAGTAATAAC

ACGCGTACGCGGCCGCTCGAGCAGAAACTCATCTCAGAAGAGGATCTGGCAGCAAATGATATCCTGGATT
ACAAGGATGACGACGATAAGGTTTAA



[View online »](#)

Protein Sequence: >RC205786 representing NM_021642
Red=Cloning site Green=Tags(s)

MTMETQMSQNVCPRLWLLQPLTVLLLLASADSQAAPPKAVLKLEPPWINVLQEDSVLTCQGARSPE
 SIQWFHNGNLIPHTQPSYRFKANNDSGEYTCQTGQTSLSDPVHLTVLSEWLVLQTPHLEFQEGETIML
 RCHSWKDKPLVKVTFVFQNGKSQKFSRLDPTFSIPQANHSHSGDYHCTGNIGYTLFSSKPVITVQVPSMG
 SSSPMGIIVAVVIATAVAIAVAIVVALIYCRKKRISANSTDPVKAQFEPFGRQMI AIRKRQLEETNNDY
 ETADGGYMTLNPRAPTDDDKNIYLTLPNDHVNNSNN

TRTRPLEQKLISEEDLAANDILDYKDDDDKV

Chromatograms: https://cdn.origene.com/chromatograms/mg2539_c09.zip

Restriction Sites: SgfI-MluI

Cloning Scheme:



ACCN: NM_021642

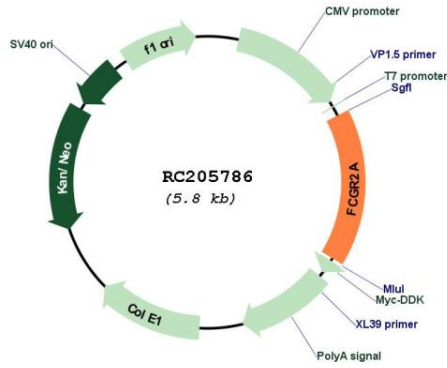
ORF Size: 948 bp

OTI Disclaimer: Due to the inherent nature of this plasmid, standard methods to replicate additional amounts of DNA in E. coli are highly likely to result in mutations and/or rearrangements. Therefore, OriGene does not guarantee the capability to replicate this plasmid DNA. Additional amounts of DNA can be purchased from OriGene with batch-specific, full-sequence verification at a reduced cost. Please contact our customer care team at custsupport@origene.com or by calling 301.340.3188 option 3 for pricing and delivery.

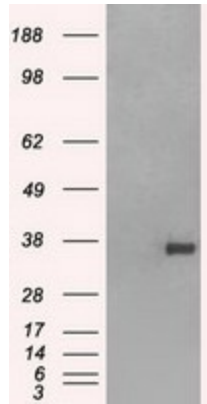
The molecular sequence of this clone aligns with the gene accession number as a point of reference only. However, individual transcript sequences of the same gene can differ through naturally occurring variations (e.g. polymorphisms), each with its own valid existence. This clone is substantially in agreement with the reference, but a complete review of all prevailing variants is recommended prior to use. [More info](#)

OTI Annotation:	This clone was engineered to express the complete ORF with an expression tag. Expression varies depending on the nature of the gene.
Components:	The ORF clone is ion-exchange column purified and shipped in a 2D barcoded Matrix tube containing 10ug of transfection-ready, dried plasmid DNA (reconstitute with 100 ul of water).
Reconstitution Method:	<ol style="list-style-type: none">1. Centrifuge at 5,000xg for 5min.2. Carefully open the tube and add 100ul of sterile water to dissolve the DNA.3. Close the tube and incubate for 10 minutes at room temperature.4. Briefly vortex the tube and then do a quick spin (less than 5000xg) to concentrate the liquid at the bottom.5. Store the suspended plasmid at -20°C. The DNA is stable for at least one year from date of shipping when stored at -20°C.
Note:	Plasmids are not sterile. For experiments where strict sterility is required, filtration with 0.22um filter is required.
RefSeq:	NM_021642.5
RefSeq Size:	2411 bp
RefSeq ORF:	951 bp
Locus ID:	2212
UniProt ID:	P12318
Cytogenetics:	1q23.3
Domains:	ig, IGc2, IG
Protein Families:	ES Cell Differentiation/IPS, Transmembrane
Protein Pathways:	Fc gamma R-mediated phagocytosis, Systemic lupus erythematosus
MW:	34.7 kDa
Gene Summary:	This gene encodes one member of a family of immunoglobulin Fc receptor genes found on the surface of many immune response cells. The protein encoded by this gene is a cell surface receptor found on phagocytic cells such as macrophages and neutrophils, and is involved in the process of phagocytosis and clearing of immune complexes. Alternative splicing results in multiple transcript variants. [provided by RefSeq, Oct 2008]

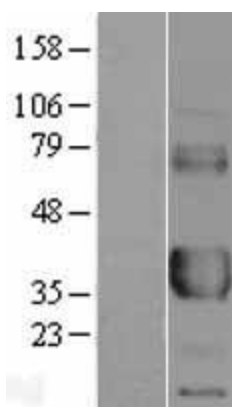
Product images:



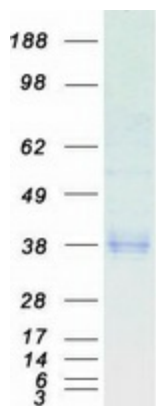
Circular map for RC205786



HEK293T cells were transfected with the pCMV6-ENTRY control (Cat# [PS100001], Left lane) or pCMV6-ENTRY FCGR2A (Cat# RC205786, Right lane) cDNA for 48 hrs and lysed. Equivalent amounts of cell lysates (5 ug per lane) were separated by SDS-PAGE and immunoblotted with anti-FCGR2A(Cat# [TA500645]). Positive lysates [LY402871] (100ug) and [LC402871] (20ug) can be purchased separately from OriGene.



Western blot validation of overexpression lysate (Cat# [LY402871]) using anti-DDK antibody (Cat# [TA50011-100]). Left: Cell lysates from untransfected HEK293T cells; Right: Cell lysates from HEK293T cells transfected with RC205786 using transfection reagent MegaTran 2.0 (Cat# [TT210002]).



Coomassie blue staining of purified FCGR2A protein (Cat# [TP305786]). The protein was produced from HEK293T cells transfected with FCGR2A cDNA clone (Cat# RC205786) using MegaTran 2.0 (Cat# [TT210002]).