

## Product datasheet for **RC205778**

### TRIP6 (NM\_003302) Human Tagged ORF Clone

#### Product data:

Product Type:	Expression Plasmids
Product Name:	TRIP6 (NM_003302) Human Tagged ORF Clone
Tag:	Myc-DDK
Symbol:	TRIP6
Synonyms:	OIP-1; OIP1; TRIP-6; TRIP6i2; ZRP-1
Mammalian Cell Selection:	Neomycin
Vector:	pCMV6-Entry (PS100001)
E. coli Selection:	Kanamycin (25 ug/mL)



[View online »](#)

**ORF Nucleotide Sequence:**

>RC205778 ORF sequence  
 Red=Cloning site Blue=ORF Green=Tags(s)

TTTTGTAATACGACTCACTATAGGGCGGCCGGAATTCGTCGACTGGATCCGGTACCGAGGAGATCTGCC  
 GCC**CGGATCGCC**

ATGTCGGGGCCACCTGGCTGCCCCGAAGCAGCCGGAGCCGCCAGAGCCCTCAGGGAGGGCGATCC  
 CCCGCGCACCCCGGGCCACCACCGGCCACGGAGCAGCACTCCAGCCCACCCAGGGTCAATTTTGG  
 CCCCCTTCCATCTGAGCAGTGTTACCAGCCCCAGGGGACCGGAGGATCGGGGGCCGGCTGGGTGGGG  
 TCCCATGGAGTACTCCAGCACACGCAGGGGCTCCCTGCAGACAGGGGGGCTTCGCCCTGGAAGCCTGG  
 ACGCCGAGATAGACTTGCTGAGCAGCAGCTGGCCGAGCTGAATGGGGTTCGGGGTTCATGCGTCACGGCG  
 ACCAGACCACAGGCATATGAGCCCCGCCACCTCCTGCCTACCGCACGGGCTCCCTGAAGCCAAATCCA  
 GCCTCGCCGCTCCAGCGTCTCCCTATGGGGGCCCACTCCAGCCTTTACTACTACCGCCAGCACCCCGG  
 CTGGCCAGCCTTCCCCGTGCAAGTGAAGTGGCACAGCCAGTGAGGGGTCGGGCCACCCAGGGGGG  
 AGCCTCTCAGGCCTCTGGCCCCCTCCGGGCCCACTTTCTCTCCAGCCGAGGTGAAGTCTGGGGG  
 CCTGGCTATAGGAGCCAGAGAGGCCAGGGCCAGGGGCCAAAGAGGAAGCTGCTGGGGTCTCTGGCCCTG  
 CAGGAAGAGGAAGAGGAGGCGAGCACGGGCCCAAGGTGCCCTGAGCCAGCCTCCAGAGGATGAGCTGGA  
 TAGGCTGACGAAGAAGCTGGTTCACGACATGAACCACCCGCCAGCGGGGAGTACTTTGGCCAGTGTGT  
 GGCTGCGGAGAAGATGTGGTGGGGATGGGGTGGGGTGTGGCCCTTGATCGCGTCTTTCACGTGGGCT  
 GCTTTGTATGTTCTACATGCCGGGCCAGCTTCGCGGCCAGCATTTCTACGCCGTGGAGAGGAGGGCATA  
 TTGCGAGGGTCTACGTGGCCACCCTGGAGAAATGTGCCAGTGTCTCCAGCCCATCTGGACCGGATC  
 CTGCGGGCTATGGGAAGGCCTACCACCCTGGCTGCTTCACTGCGTGGTGTGTACCCGGCCTCGACG  
 GCATCCCTTACAGTGGATGCTACGAGCCAGATCCACTGCATTGAGGACTTTACAGAAATTTGCCCC  
 AAGATGCTCAGTGTGCGGTGGGGCCATAATGCCTGAGCCAGTCAAGAGGAGACTGTGAGAATTTGCT  
 CTGGATCGAAGTTTTACATTGGCTGTTACAAGTGCAGGAGTGTGGGCTGCTGCTCCTCTGAGGGCG  
 AGTGTGAGGGCTGCTACCCGCTGGATGGGCACATCTTGTGCAAGGCCTGCAGCGCCTGGCGCATCCAGGA  
 GCTCTCAGCCACCGTCACTACTGACTGC

**ACGCGT**ACGCGGCCGCTCGAGCAGAACTCATCTCAGAAGAGGATCTGGCAGCAATGATATCCTGGATT  
 ACAAGGATGACGACGATAAGGTTTAA

**Protein Sequence:**

>RC205778 protein sequence  
 Red=Cloning site Green=Tags(s)

MSGPTWLPKQPEPARAPQGRAIPRGTPGPPPAHGAALQPHPRVNFCLPSEQCYQAPGGPEDRGPWVG  
 SHGVLQHTQGLPADRGGLRPGSLDAEIDLSSSTLAELNGGRGHASRRPDRQAYEPPIPPAYRTGSLKPNP  
 ASPLPASPYGGTPASYTTASTPAGPAFPVQVKAQPVRCGPPRRGASQASGPLPGPHFPLPGRGEVWG  
 PGYRSQREPGPAKEEAAGVSGPAGRGRGEGHPQVPLSQPPELDRLTKKLVHDMNHPPSGEYFGCCG  
 GCGEDVVDGAGVVALDRVFHVGCFVCSTCRAQLRGQHFYAVERRAYCEGCYVATLEKCATCSQPILDRI  
 LRAMGKAYHPGCFTCVVCHRGLDGIPFTVDATSIHCIEDFHRKFAPRCSVCGGAIMPEPGQEETVRIVA  
 LDRSFHIGCYKCEECGLLLSSEGEQGCYPLDGHILCKACSAWRIQELSATVTTDC

**TR**TRPLEQKLISEEDLAANDILDYKDDDDKV

**Chromatograms:**

[https://cdn.origene.com/chromatograms/mk6197\\_f02.zip](https://cdn.origene.com/chromatograms/mk6197_f02.zip)

**Restriction Sites:**

Sgfl-Mlul

**Cloning Scheme:**

Cloning sites used for ORF Shutting:



\* The last codon before the Stop codon of the ORF

**ACCN:** NM\_003302

**ORF Size:** 1428 bp

**OTI Disclaimer:** The molecular sequence of this clone aligns with the gene accession number as a point of reference only. However, individual transcript sequences of the same gene can differ through naturally occurring variations (e.g. polymorphisms), each with its own valid existence. This clone is substantially in agreement with the reference, but a complete review of all prevailing variants is recommended prior to use. [More info](#)
**OTI Annotation:** This clone was engineered to express the complete ORF with an expression tag. Expression varies depending on the nature of the gene.

**Components:** The ORF clone is ion-exchange column purified and shipped in a 2D barcoded Matrix tube containing 10ug of transfection-ready, dried plasmid DNA (reconstitute with 100 ul of water).

**Reconstitution Method:**

1. Centrifuge at 5,000xg for 5min.
2. Carefully open the tube and add 100ul of sterile water to dissolve the DNA.
3. Close the tube and incubate for 10 minutes at room temperature.
4. Briefly vortex the tube and then do a quick spin (less than 5000xg) to concentrate the liquid at the bottom.
5. Store the suspended plasmid at -20°C. The DNA is stable for at least one year from date of shipping when stored at -20°C.

**RefSeq:** [NM\\_003302.3](#)
**RefSeq Size:** 1762 bp

**RefSeq ORF:** 1431 bp

**Locus ID:** 7205

**UniProt ID:** [Q15654](#)
**Cytogenetics:** 7q22.1

**Domains:** LIM

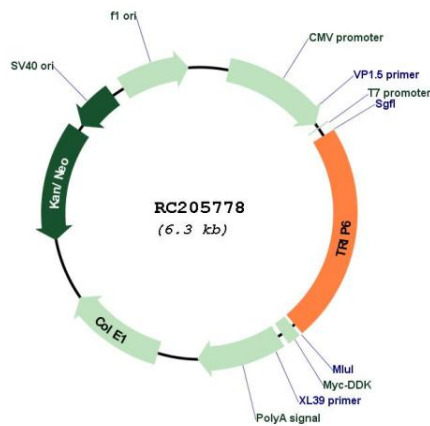
**Protein Families:** Druggable Genome

**Protein Pathways:** NOD-like receptor signaling pathway

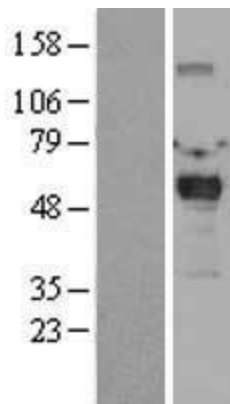
**MW:** 50.3 kDa

**Gene Summary:** This gene is a member of the zyxin family and encodes a protein with three LIM zinc-binding domains. This protein localizes to focal adhesion sites and along actin stress fibers. Recruitment of this protein to the plasma membrane occurs in a lysophosphatidic acid (LPA)-dependent manner and it regulates LPA-induced cell migration. Alternatively spliced variants which encode different protein isoforms have been described; however, not all variants have been fully characterized. [provided by RefSeq, Jul 2008]

**Product images:**



Circular map for RC205778



Western blot validation of overexpression lysate (Cat# [LY401139]) using anti-DDK antibody (Cat# [TA50011-100]). Left: Cell lysates from untransfected HEK293T cells; Right: Cell lysates from HEK293T cells transfected with RC205778 using transfection reagent MegaTran 2.0 (Cat# [TT210002]).