

Product datasheet for **RC205776**

KLHDC4 (NM_017566) Human Tagged ORF Clone

Product data:

Product Type:	Expression Plasmids
Product Name:	KLHDC4 (NM_017566) Human Tagged ORF Clone
Tag:	Myc-DDK
Symbol:	KLHDC4
Mammalian Cell Selection:	Neomycin
Vector:	pCMV6-Entry (PS100001)
E. coli Selection:	Kanamycin (25 ug/mL)



[View online »](#)

ORF Nucleotide Sequence:

>RC205776 ORF sequence
 Red=Cloning site Blue=ORF Green=Tags(s)

TTTTGTAATACGACTCACTATAGGGCGGCCGGAATTCGTCGACTGGATCCGGTACCGAGGAGATCTGCC
 GCC**CGGATCGCC**

ATGGGCAAGAAGGGCAAGAAGGAGAAGAAGGGCCGCGCGCGGAGAAGACGGCCGCAAGATGGAGAAGA
 AGGTGTCTAAGCGCTCGCGGAAGGAGGAGAAGACCTGGAAGCGCTCATAGCCCATTTCCAGACACTCGA
 TGCCAAGAGGACTCAGACTGTGGAACCTCCGTGCCCCACCCTACCAAGGTTAAATGCCTCCCTCTCG
 GTTCATCTGAGAAAGATGAGTTAATCCTTTTTGGAGGTGAATATTTCAACGGCCAAAAAATTTTTTGT
 ATAACGAGCTCTATGTCTACAATACCAGAAAGGACACCTGGACCAAAGTTGACATCCCCAGTCCACCTCC
 GAGGCGCTGTGCTCACCAGGCGGTGAGTGCCTCAAGGTGGCGGACAGCTGTGGGTCTTTGGAGGGGAG
 TTTGCCTCTCCAACGGAGAGCAGTTCTACCCTACAAGGATCTCTGGGTCTGCATTTGGCCCAAGA
 CCTGGGAACAAGTCAAATCAACAGGCGGTCTTCCGGTTCGGAGTGGACATCGGATGGTGGCTGGAAGAG
 ACAATTGATCCTGTTTGGTGGCTTCCATGAAAGTACACGGGATTACATCTACTACAACGAGCTGTATGCC
 TTTAATCTGGACACCTTACATGGAGCAAGCTGTCCCGTCAGGGACGGGGCCACACCCAGATCAGGCT
 GCCAGATGTCCTCACTCCCGAGGGCGGCATCGTCGTCTATGGGGCTACTCGAAACAGAGAGTTAAGAA
 AGACGTGGACAAGGGCACACGGCACTCAGACATGTTTCTGCTGAAGCCAGAGGACGGAAGAGAAGACAAG
 TGGGTTTGGACTCGGATGAACCTTCGGGGTCAAGCCACCCACCGGTCTGGCTTTTCCGTGGCCATGG
 CCCCAGTACCAGACACTGTTCTTCGGGGTGTCTGTGACGAGGAAGAGGAGGAGCCTGTGGGCGA
 GTTCTTCAACGATCTGTACTTCTACGACGCCACCAGGAACCGTTGGTTGAGGGACAGCTGAAGGGACCC
 AAGTCTGAAAAGAAGAACCGCAGGCGGGCAGAAAAGAGGAGCCCGAAGTGGTAGCAGGCCGCGTGTG
 GGGGAGCTGGCACCCAGGGCCTGTGCAGCTGGTCAAGGAGGTGGTGGCCGAGGATGGCACCGTGGTAC
 CATTAAAGCAGGTGCTCACCGCGCCAGGCTCGGGCGGGCAGCCCGGTCTGAGGACGAAGACAGCCTTGAG
 GAGGCCGCGAGCCCGCACCTGGGCCGTGCCACGCTCCAACGCCATGCTGGCTGTGAAGCATGGGTGC
 TCTACGCTATGGGGCATGTTTGGAGCCGGCAGCCAGGTCACCCTCAGCGACTGCACTGCCTGGA
 CCTGCACAGGATGGAGGCGTGGAAAGCCTTGGTGGAGATGGACCCAGAACTCAGGAGTGGCTGGAGGAG
 ACGGACTCGGAAGAGGACAGTGAAGGAGTTGAGGGCGCCAGGGTGGGTGCGACGACGAAGACAGCGGAG
 AGGAGAGCGGTGCGGAGGAC

ACGCGTACGCGGCCGCTCGAGCAGAAACTCATCTCAGAAGAGGATCTGGCAGCAAATGATATCCTGGATT
 ACAAGGATGACGACGATAAGGTTTAA

Protein Sequence:

>RC205776 protein sequence
 Red=Cloning site Green=Tags(s)

MGKKGKKEKKGRGAEKTAAMEKKVSKRSRKEEEDLEALIAHFQTLDAKRTQTVELPCPPSPRLNASLS
 VHPEKDELILFGGEYFNGQKTFLYNELVYVYNTKDTWTKVDIPSPPPRCAHQAVVVPQGGGQLWVFGGE
 FASPNGEQFYHYKDLWVHLATKTWEQVKSTGGPSGRSGHRMVAWKRQLILFGGFHESTRDYIYYNDVYA
 FNLDFTTWSKLSPSGTGTPRSGCQMSVTPQGGIVVYGGYSKQRVKDVKGRHSDMFLKPEDGREDK
 WWTRMNPSPGVKPTPRSGFSVAMAPNHQTLFFGGVCEEEEEESLSEFFNDLYFYDATRNRFEGQLKGP
 KSEKKRRRRRKEEPEGGRPACGGAGTQGPVQLYKEVVAEDGTVVTIKQVLTAPGSAGQPRSEDEDSLE
 EAGSPAPGPCPRSNAMLAVKHGVLVYVYGMFEAGDRQVTLSDLHCLDLHRMEAWKALVEMDPETQEWLEE
 TDSEEDSEEVGAEGGVDEDEDSGEEESGAED

TRTRPLEQK**LI**SEEDLAANDILDYKDDDDKV

Chromatograms:

https://cdn.origene.com/chromatograms/mk6521_b10.zip

Restriction Sites:

SgfI-MluI

Cloning Scheme:


ACCN: NM_017566

ORF Size: 1560 bp

OTI Disclaimer: The molecular sequence of this clone aligns with the gene accession number as a point of reference only. However, individual transcript sequences of the same gene can differ through naturally occurring variations (e.g. polymorphisms), each with its own valid existence. This clone is substantially in agreement with the reference, but a complete review of all prevailing variants is recommended prior to use. [More info](#)

OTI Annotation: This clone was engineered to express the complete ORF with an expression tag. Expression varies depending on the nature of the gene.

Components: The ORF clone is ion-exchange column purified and shipped in a 2D barcoded Matrix tube containing 10ug of transfection-ready, dried plasmid DNA (reconstitute with 100 ul of water).

- Reconstitution Method:**
1. Centrifuge at 5,000xg for 5min.
 2. Carefully open the tube and add 100ul of sterile water to dissolve the DNA.
 3. Close the tube and incubate for 10 minutes at room temperature.
 4. Briefly vortex the tube and then do a quick spin (less than 5000xg) to concentrate the liquid at the bottom.
 5. Store the suspended plasmid at -20°C. The DNA is stable for at least one year from date of shipping when stored at -20°C.

RefSeq: [NM_017566.4](#)

RefSeq Size: 1944 bp

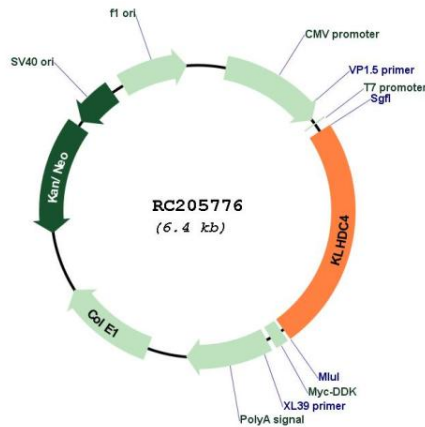
RefSeq ORF: 1563 bp

Locus ID: 54758

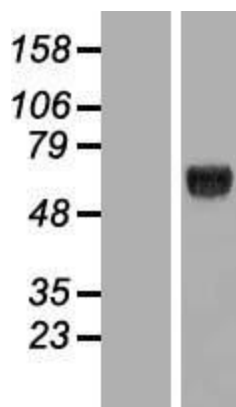
UniProt ID: [Q8TBB5](#)

Cytogenetics: 16q24.2
Domains: Kelch
MW: 57.9 kDa

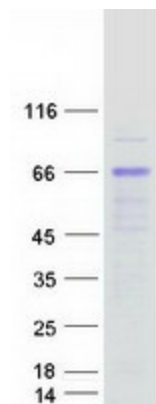
Product images:



Circular map for RC205776



Western blot validation of overexpression lysate (Cat# [LY413708]) using anti-DDK antibody (Cat# [TA50011-100]). Left: Cell lysates from untransfected HEK293T cells; Right: Cell lysates from HEK293T cells transfected with RC205776 using transfection reagent MegaTran 2.0 (Cat# [TT210002]).



Coomassie blue staining of purified KLHDC4 protein (Cat# [TP305776]). The protein was produced from HEK293T cells transfected with KLHDC4 cDNA clone (Cat# RC205776) using MegaTran 2.0 (Cat# [TT210002]).