

Product datasheet for RC205764

FBLIM1 (NM_017556) Human Tagged ORF Clone

Product data:

Product Type:	Expression Plasmids
Product Name:	FBLIM1 (NM_017556) Human Tagged ORF Clone
Tag:	Myc-DDK
Symbol:	FBLIM1
Synonyms:	CAL; FBLP-1; FBLP1
Mammalian Cell Selection:	Neomycin
Vector:	pCMV6-Entry (PS100001)
E. coli Selection:	Kanamycin (25 ug/mL)
ORF Nucleotide Sequence:	>RC205764 ORF sequence Red=Cloning site Blue=ORF Green=Tags(s)

TTTTGTAATACGACTCACTATAGGGCGGCCGGAATTCGTCGACTGGATCCGGTACCGAGGAGATCTGCC
GCC**CGATCGCC**

ATGGCCTCAAAGCCTGAGAAGAGGGTGGCATCGTCTGTCTTTATCACCTGGCACCCCGCGCCGCGATG
TGGCCGTGGCGGAGGAAGTGAGGCAGGCAGTTTGTGAGGCCCGCGTGGCCGCCCTGGGAGGCTCTGC
CCCCATGAAGACACCCGAGGCTGGCTTGGCGGGAGGCCAGCCCTGGACAACCCCTGGCAGAGCTGCA
GCCACAGTGCCGGCTGCACCTATGCAGCTTCAATGGAGGATGCCACCCCTCCTCCTGTCTGGATG
GTGAGGACGTGCTTCTGACCTGGACCTCTCCACCCCTCCACCGCCCTCCAGTGCTTCTGCCTTC
TGAAGAGGAGGCTCCTGCTCCAATGGGGCCTCACTATTGCAGACTTAGAGCAGCTGCACCTGTCCCCG
CCCCCGCCCCACCACAGGCCCCAGCGGAGGGACCTTCAGTCCAGCCCGTCCCCCTCAGGCCCATGGAGG
AAGAGTGCCACCTCCCCGGCAGAACCTGTTGAGAAAGGGGCATCCACAGACATCTGTGCCTTCTGCCA
CAAGACCGTGTCCCCGAGAGCTGGCTGTGGAGGCCATGAAGAGGCAGTACCATGCCAGTGCTTACAG
TGCCGCACCTGCCGCCGACGCTGGCTGGGCAGAGCTTACCAGAAGGATGGCGCACCCCTCTGCGAAC
CCTGCTACCAGGACACTGGAGAGGTGCGGCAAGTGTGGCGAGGTGGTCCGGGACCACATCATCAGGGC
CTTGGCCAGGCCTTCCACCCCTCCTGCTTACGTGTGTGACCTGCGCCCGGTGCATTGGGGATGAGAGC
TTTGCCCTGGGCAGCCAGAACGAGGTGTACTGCCTGGACGACTTCTACAGGAAATTCGCCCCGTCTGCA
GCATCTGTGAAAATCCCATCATCCCTCGGGATGGGAAAGATGCCTTCAAATCGAATGCATGGGAAGAAA
CTTCCATGAAAATTGCTACAGGTGTGAGGACTGCAGGATCCTCCTGTCTGTGAGCCACGGACCAAGGC
TGCTACCCCTGAACAACCATCTCTTCTGCAAGCCATGCCATGTGAAGCGGAGTGCTGCGGGGTGCTGC

ACGCGTACGCGGCCGCTCGAGCAGAACTCATCTCAGAAGAGGATCTGGCAGCAATGATATCCTGGATT
ACAAGGATGACGACGATAAGGTTAA



[View online »](#)

Protein Sequence: >RC205764 protein sequence
Red=Cloning site Green=Tags(s)

MASKPEKRVASSVFITLAPRRRDVAVAEVQRQAVCEARRGRPWEAPAPMKTP EAGLAGRPSWTTT
 PGRRAATVPAAPMQLFNGGCPPPPVLDGEDVLPDLDLLPPPPPPVLLPSEEEAPAPMGASLIADLEQLHLS
 PPPPPQAPAEGPSVQPGPLRPMEEELPPPPAEPVEKGASTDICAFCCHKTVFPRELAVEAMKROYHAQCFT
 CRTCRRLAGQSFYQKDGRLCEPCYQDTLERCGKCGEVVRDHIIRALGQAFHPSCFTCVTCARCIGDES
 FALGSQNEVYCLDDFYRKFAPVCSICENPIIPRDGKDAFKIECMGRNFHENCYRCEDCRILLSVEPTDQG
 CYPLNNHLFCVKPCHVKRSAAGCC

TRTRPLEQKLISEEDLAANDILDYKDDDDKV

Chromatograms: https://cdn.origene.com/chromatograms/mk6015_h10.zip

Restriction Sites: SgfI-MluI

Cloning Scheme:



ACCN: NM_017556

ORF Size: 1119 bp

OTI Disclaimer: The molecular sequence of this clone aligns with the gene accession number as a point of reference only. However, individual transcript sequences of the same gene can differ through naturally occurring variations (e.g. polymorphisms), each with its own valid existence. This clone is substantially in agreement with the reference, but a complete review of all prevailing variants is recommended prior to use. [More info](#)

OTI Annotation: This clone was engineered to express the complete ORF with an expression tag. Expression varies depending on the nature of the gene.

Components: The ORF clone is ion-exchange column purified and shipped in a 2D barcoded Matrix tube containing 10ug of transfection-ready, dried plasmid DNA (reconstitute with 100 ul of water).

- Reconstitution Method:**
1. Centrifuge at 5,000xg for 5min.
 2. Carefully open the tube and add 100ul of sterile water to dissolve the DNA.
 3. Close the tube and incubate for 10 minutes at room temperature.
 4. Briefly vortex the tube and then do a quick spin (less than 5000xg) to concentrate the liquid at the bottom.
 5. Store the suspended plasmid at -20°C. The DNA is stable for at least one year from date of shipping when stored at -20°C.

RefSeq: [NM_017556.1](#)

RefSeq Size: 3363 bp

RefSeq ORF: 1122 bp

Locus ID: 54751

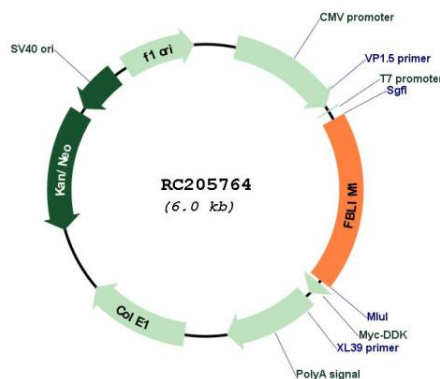
UniProt ID: [Q8WUP2](#)

Cytogenetics: 1p36.21

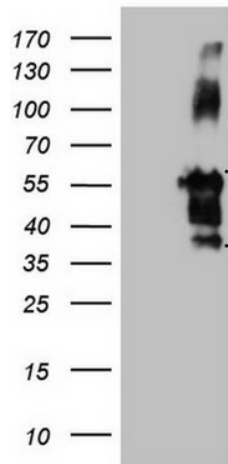
MW: 40.7 kDa

Gene Summary: This gene encodes a protein with an N-terminal filamin-binding domain, a central proline-rich domain, and, multiple C-terminal LIM domains. This protein localizes at cell junctions and may link cell adhesion structures to the actin cytoskeleton. This protein may be involved in the assembly and stabilization of actin-filaments and likely plays a role in modulating cell adhesion, cell morphology and cell motility. This protein also localizes to the nucleus and may affect cardiomyocyte differentiation after binding with the CSX/NKX2-5 transcription factor. Alternative splicing results in multiple transcript variants encoding different isoforms. [provided by RefSeq, Jul 2008]

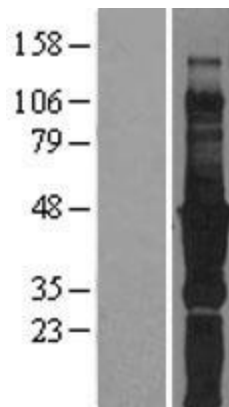
Product images:



Circular map for RC205764



HEK293T cells were transfected with the pCMV6-ENTRY control (Cat# [PS100001], Left lane) or pCMV6-ENTRY FBLIM1 (Cat# RC205764, Right lane) cDNA for 48 hrs and lysed. Equivalent amounts of cell lysates (5 ug per lane) were separated by SDS-PAGE and immunoblotted with anti-FBLIM1 (Cat# [TA807282]). Positive lysates [LY402597] (100ug) and [LC402597] (20ug) can be purchased separately from OriGene.



Western blot validation of overexpression lysate (Cat# [LY402597]) using anti-DDK antibody (Cat# [TA50011-100]). Left: Cell lysates from untransfected HEK293T cells; Right: Cell lysates from HEK293T cells transfected with RC205764 using transfection reagent MegaTran 2.0 (Cat# [TT210002]).



Coomassie blue staining of purified FBLIM1 protein (Cat# [TP305764]). The protein was produced from HEK293T cells transfected with FBLIM1 cDNA clone (Cat# RC205764) using MegaTran 2.0 (Cat# [TT210002]).