

Product datasheet for **RC205763**

GABPB2 (NM_144618) Human Tagged ORF Clone

Product data:

Product Type:	Expression Plasmids
Product Name:	GABPB2 (NM_144618) Human Tagged ORF Clone
Tag:	Myc-DDK
Symbol:	GABPB2
Synonyms:	GABPB-2
Mammalian Cell Selection:	Neomycin
Vector:	pCMV6-Entry (PS100001)
E. coli Selection:	Kanamycin (25 ug/mL)



[View online »](#)

ORF Nucleotide Sequence:

>RC205763 ORF sequence
 Red=Cloning site Blue=ORF Green=Tags(s)

TTTTGTAATACGACTCACTATAGGGCGGCCGGGAATTCGTCGACTGGATCCGGTACCGAGGAGATCTGCC
 GCC**CGCATCGCC**

ATGTCCTTTGGTGGACTTGGGAAAGAGTTGCTAGAACAGCAAGAAAAGCCAAGATGATGAAGTGAGAA
 CGTTGATGGCAAATGGCGCCCATTCACACAGACTGGCTTGAACATCACCCCTCCACCTTGCAGCTCA
 ATATGGTCATTATTCCACAGCAGAAGTACTCCTTCGAGCAGGTGTAGCAGGGATGCCCGGACTAAAGTA
 GACAGGACCCCTTGACATGGCTGCAGCCGATGGACATGCGCACATCGTGGAAGTCTTGTTCGGAATG
 GTGCAGATGTGAATGCCAAGGACATGCTGAAGATGACAGCTTTGCATTGGGCCACAGAGCGCCACCATCG
 AGATGTCGTAGAGTTACTTATCAAATATGGAGCTGATGTCATGCTTTCAGCAAATTTGATAAATCAGCC
 TTTGACATAGCTCGGAGAAAAACAATGCTGAGATTTTGGTCATCCTCCAGGAAGCAATGCAGAATCAGG
 TGAATGTTAATCCAGAGAGACCAACCCTGTGACTGACCTGTGAGTATGGCTGCTCCATTCATCTTAC
 GTCGGGTGAGTTGTTAACCTCGCAAGCCTTATTTCTTCAACCAACACCAAAAACAACCTCAGGTGACCC
 CATGCCTCAACAGTACAGTTTTCAAATCTACCACCTCAGTGCTGGCTACCTTGCAGCTCTTGCTGAGG
 CATCAGTCCCCCTCTCCAACACACAGAGCCACAGCCAATACAGAGGAATTATAGAAGGAAATTCCTG
 TGACTCATCAATCCAGCAAGTAATGGGGAGTGGAGGCCAGAGGGTCATCACCATAGTGACTGATGGAGTC
 CCTCTGGGTAATATCCAAACTTCAATCCCTACTGGAGGCATTGGCCAGCCATTTATTGTAAGTGTGCAAG
 ATGGACAGCAAGTTCTAACTGTACCTGCTGGTAAGGTTGCAGAGGAGACTGTAATTAAGAGGAAGAAGA
 AGAGAAGTTGCCACTAACAAAGAAACCAAGGATAGGAGAGAAGACAAACAGTGTGGAGGAAAGCAAGGAA
 GGCAATGAAAGAGAGCTACTACAGCAACAACCTCCAGGAGGCCAATCGAAGAGCCAGGAATACCGACACC
 AGCTCCTAAAGAAAGAGCAGGAAGCAGAACAGTACCGTCTTAAGCTGGAGGCCATAGCCCGACAGCAGCC
 CAATGGAGTTGATTTACCATGGTTGAAGAGGTGGCTGAGGTAGATGCTGTAGTAGTCACAGAGGGGGAG
 TTGGAAGAGAGAGAGACAAAAGTACTGGGTCAGCAGGGACCACAGGCCTCACACTAGAGTTTCCATGG
 CAACTGTTTCATCT

ACGCGTACGCGGCCGCTCGAGCAGAACTCATCTCAGAAGAGGATCTGGCAGCAAATGATATCCTGGATT
 ACAAGGATGACGACGATAAGGTTTAA

Protein Sequence:

>RC205763 protein sequence
 Red=Cloning site Green=Tags(s)

MSLVDLGKRLLEAARKGQDDEVRTL MANGAPFTD DLGTSPLHLAAQYGHYSTAEVLLRAGVSRDARTKV
 DRTPLMHMAADGHAHIVELLVRNGADVNAKDKMLKMTALHWATERHHRDVVELLIKYGADVHAFSKFDKSA
 FDIALEKNNAEILVILQEAMQNQVNVNPERANPVTDPVSMAPFIFTSGEVVNLASLISSTNTKTTSGDP
 HASTVQFSNSTTSLATLAALAEASVPLNSHRATANTEEIEGNSVDSSIQQVMGSGGQQRVITIVTDGV
 PLGNIQTSIPTGGIGQPFIVTVQDQQLVTPAGKVAEETVIKEEEEEKPLTKKPRIGEKTNSVVEESKE
 GNERELLQQQLQEANRRAQEYRHQLLKEQEAEQYRLKLEAIARQQPNGVDFTMVEEVAEVDVVVTEGE
 LEERETKVTGSAGTTEPHTRVSMATVSS

TRTRPLEQKLISEEDLAANDILDYKDDDDKV

Chromatograms:

https://cdn.origene.com/chromatograms/mk6521_b03.zip

Restriction Sites:

SgfI-MluI

Cloning Scheme:


ACCN: NM_144618

ORF Size: 1344 bp

OTI Disclaimer: The molecular sequence of this clone aligns with the gene accession number as a point of reference only. However, individual transcript sequences of the same gene can differ through naturally occurring variations (e.g. polymorphisms), each with its own valid existence. This clone is substantially in agreement with the reference, but a complete review of all prevailing variants is recommended prior to use. [More info](#)

OTI Annotation: This clone was engineered to express the complete ORF with an expression tag. Expression varies depending on the nature of the gene.

Components: The ORF clone is ion-exchange column purified and shipped in a 2D barcoded Matrix tube containing 10ug of transfection-ready, dried plasmid DNA (reconstitute with 100 ul of water).

- Reconstitution Method:**
1. Centrifuge at 5,000xg for 5min.
 2. Carefully open the tube and add 100ul of sterile water to dissolve the DNA.
 3. Close the tube and incubate for 10 minutes at room temperature.
 4. Briefly vortex the tube and then do a quick spin (less than 5000xg) to concentrate the liquid at the bottom.
 5. Store the suspended plasmid at -20°C. The DNA is stable for at least one year from date of shipping when stored at -20°C.

RefSeq: [NM_144618.3](#)

RefSeq Size: 1953 bp

RefSeq ORF: 1347 bp

Locus ID: 126626

UniProt ID: [Q8TAK5](#)

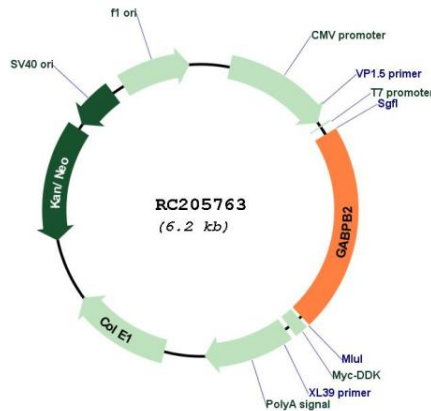
Cytogenetics: 1q21.3

Protein Families: Transcription Factors

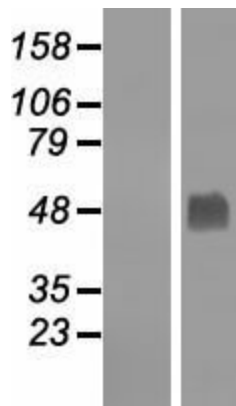
MW: 48.6 kDa

Gene Summary: May function as transcription factor capable of interacting with purine rich repeats (GA repeats).[UniProtKB/Swiss-Prot Function]

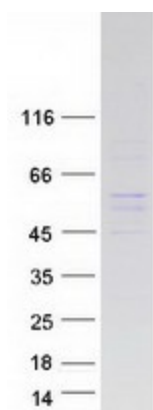
Product images:



Circular map for RC205763



Western blot validation of overexpression lysate (Cat# [LY408253]) using anti-DDK antibody (Cat# [TA50011-100]). Left: Cell lysates from untransfected HEK293T cells; Right: Cell lysates from HEK293T cells transfected with RC205763 using transfection reagent MegaTran 2.0 (Cat# [TT210002]).



Coomassie blue staining of purified GABPB2 protein (Cat# [TP305763]). The protein was produced from HEK293T cells transfected with GABPB2 cDNA clone (Cat# RC205763) using MegaTran 2.0 (Cat# [TT210002]).