

Product datasheet for **RC205759**

SH3BP2 (NM_003023) Human Tagged ORF Clone

Product data:

Product Type:	Expression Plasmids
Product Name:	SH3BP2 (NM_003023) Human Tagged ORF Clone
Tag:	Myc-DDK
Symbol:	SH3BP2
Synonyms:	3BP-2; 3BP2; CRBM; CRPM; RES4-23
Mammalian Cell Selection:	Neomycin
Vector:	pCMV6-Entry (PS100001)
E. coli Selection:	Kanamycin (25 ug/mL)



[View online »](#)

ORF Nucleotide Sequence:

>RC205759 ORF sequence
 Red=Cloning site Blue=ORF Green=Tags(s)

TTTTGTAATACGACTCACTATAGGGCGGCCGGAATTCGTCGACTGGATCCGGTACCGAGGAGATCTGCC
 GCC**CGGATCGCC**

ATGGCGGCTGAAGAGATGCATTGGCCTGTCCCTATGAAGGCCATTGGTGCCAGAACCTGCTAACCATGC
 CTGGGGCGTGGCCAAGGCTGGCTACCTGCACAAGAAGGGCGGTACCCAGCTGCAGCTGCTGAAATGGCC
 CCTGCGCTTTGTATCATCCACAACGCTGCGTCTACTACTTCAAGAGTAGCACCTCTGCCTCCCCGCGAG
 GGCGCCTTCTCCCTGAGTGGCTATAACCGGGTGTGCGGGCGGCTGAGGAGACCACGTCCAACAACGTTT
 TCCCTTCAAGATCATCCACATCAGCAAGAAGCACCGCACGTGGTTCTTCTCGGCCTCTCCGAGGAGGA
 GCGCAAGAGCTGGATGGCCTTGTGCGCAGGGAGATTGGCCACTCCACGAAAAGAAAGACTGCCCTTG
 GACACCAGCGACTCCAGCTCGGACACAGACAGCTTCTACGGCGCAGTTGAGCGGCCTGTGGATATCAGCC
 TTTCCCGTACCCACGGACAATGAAGACTATGAGCACGACGATGAGGATGACTCCTACCTGGAGCCTGA
 CTCCCCGAGCCCGGAAGCTTGAGGATGCCCTGATGCACCCACCGGCTTACCCACCACCCCGAGTGCCC
 ACGCCCAGGAAGCCAGCCTTCTCTGACATGCCCGGGGCCACTCCTTTACTTCAAGGGCCCCGGTCCCC
 TACTGCCACCCCCGCCCCCTAAGCACGGCTCCAGATGTTGGCCTGGCTGCTGAGGACTCCAAGAGGGA
 CCCACTGTGCCCGAGGCGGGCTGAGCCTTGCCCCAGGGTACCTGTACCCCCGAAGGATGAGCGATCCC
 CCTCTGAGCACCATGCCACCGCACCGGCCTCCGGAAACCCCTTGCTTCCGGGAGAGTGCCAGCCCCA
 GCCCGGAGCCCTGGACCCTGGCCACGGGGCTGCTCCACTTCCAGTGTGCCATCATGGCCACTGCCAC
 CTCCAGAACTGTGACAACTCAAGTCTTCCACTGTCCCCCGAGGACCACCCACATCTGAGCCCCCA
 CCTGTGCCAGCCAACAAGCCCAAGTTCCTGAAGATAGCTGAAGAGGACCCCCAAGGGAGGCACCCATGC
 CCGGACTCTTTGTGCCCCCGTGGCTCCCGGCCTCCTGCGCTGAAGCTGCCAGTGCCTGAGGCCATGGC
 GCGGCCCGCAGTCTGCCAGGCCAGAGAAGCCGACGCTCCCGCACCTCCAGCGATCACCCCGCATGGG
 CAGAGTTTCAGGAGCTTCTCCTTTGAAAAGCCCCGCAACCTCACAGGCTGACACTGGCGGGGACGACT
 CGGACGAGGACTATGAGAAGGTGCCACTGCCAACTCGGTCTTGTCAACACCACGGAGTCTGCGAAGT
 GGAAAGTTGTTCAAGGCTACAAGCCCCGGGAGAGCCCCAGGATGGACTCTACTGCATCCGGAATCC
 TCTACCAAGTCCGGGAAGGTCTGGTTGTGTGGGACGAACTCTAACAAAGTGAAGAACTATCGCATT
 TTGAGAAGGACTTAAGTTCTACCTGGAGGGCGAGGTCTGTTTGTGAGTGTGGCAGCATGGTGGAGCA
 CTACCACACCCAGTGTGCCAGCCACCAGAGCTGTGCTGCGGCACCCCTACGGCTACTGGCCT
 AGG

ACGCGTACGCGGCGGCTCGAGCAGAACTCATCTCAGAAGAGGATCTGGCAGCAAATGATATCCTGGATT
 ACAAGGATGACGACGATAAGGTTTAA

Protein Sequence:

>RC205759 protein sequence
 Red=Cloning site Green=Tags(s)

MAAEMHWPVPMKAIGAQNLLTMPGVAKAGYLHKKGGTQLQLLKWPLRFVIIHKRCVYYFKSSTSASPQ
 GAFSLSGYNRMRAAEETTSNNVFPFKIIHISKKHRTWFFSASSEERKSWMALLRREIGHFHEKKDLPL
 DTSDDSSDTSFYGAVERPVDISLSPYPTDNEDYEHDDEDDSYLEPDSPEPGRLEDALMHPPAYPPPPVP
 TPRKPAFSDMPRAHSFTSKGPGPLPPPPPKHGLPDVGLAAEDSKRDPLCPRAEPCPRVPATPRRMSDP
 PLSTMPTAPGLRPPCFRESASPSPEPWTPGHGACSTSSAAIMATATSRNCDKLSFHLSPRGPPTSEPP
 PVPANKPKFLKIAEEDPPREAAMPGLFVPPVAPRPPALKLPVPEAMARPAVLPRPEKQPLPHLQRSPPDG
 QSFRSFSFEKPRQPSQADTGGDDSDYEVKPLPNSVFNNTTESCEVERLFKATSPRGEPQDGLYCIKNS
 STKSGKVLVWDETSNKVRNYRIFEKDSKFYLEGEVLFVSVGSMVEHYHVLPSHQSLLLRHPYGYTGP
 R

TRTRPLEQKLISEEDLAANDILDYKDDDDKV

Chromatograms:

https://cdn.origene.com/chromatograms/mk6139_e06.zip

Restriction Sites:

Sgfl-Mlul

Cloning Scheme:


ACCN: NM_003023

ORF Size: 1683 bp

OTI Disclaimer: Due to the inherent nature of this plasmid, standard methods to replicate additional amounts of DNA in E. coli are highly likely to result in mutations and/or rearrangements. Therefore, OriGene does not guarantee the capability to replicate this plasmid DNA. Additional amounts of DNA can be purchased from OriGene with batch-specific, full-sequence verification at a reduced cost. Please contact our customer care team at custsupport@origene.com or by calling 301.340.3188 option 3 for pricing and delivery.

The molecular sequence of this clone aligns with the gene accession number as a point of reference only. However, individual transcript sequences of the same gene can differ through naturally occurring variations (e.g. polymorphisms), each with its own valid existence. This clone is substantially in agreement with the reference, but a complete review of all prevailing variants is recommended prior to use. [More info](#)

OTI Annotation: This clone was engineered to express the complete ORF with an expression tag. Expression varies depending on the nature of the gene.

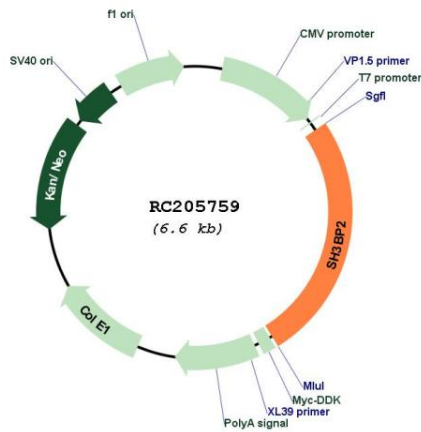
Components: The ORF clone is ion-exchange column purified and shipped in a 2D barcoded Matrix tube containing 10ug of transfection-ready, dried plasmid DNA (reconstitute with 100 ul of water).

- Reconstitution Method:**
1. Centrifuge at 5,000xg for 5min.
 2. Carefully open the tube and add 100ul of sterile water to dissolve the DNA.
 3. Close the tube and incubate for 10 minutes at room temperature.
 4. Briefly vortex the tube and then do a quick spin (less than 5000xg) to concentrate the liquid at the bottom.
 5. Store the suspended plasmid at -20°C. The DNA is stable for at least one year from date of shipping when stored at -20°C.

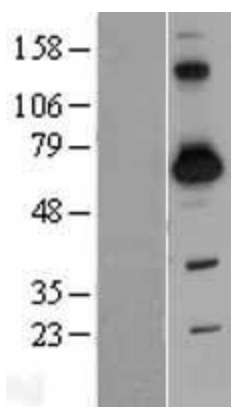
RefSeq: [NM_003023.4](#)
RefSeq Size: 9209 bp
RefSeq ORF: 1686 bp
Locus ID: 6452
UniProt ID: [P78314](#)
Cytogenetics: 4p16.3
Domains: SH2, PH
Protein Families: Druggable Genome
Protein Pathways: Natural killer cell mediated cytotoxicity
MW: 62.2 kDa

Gene Summary: The protein encoded by this gene has an N-terminal pleckstrin homology (PH) domain, an SH3-binding proline-rich region, and a C-terminal SH2 domain. The protein binds to the SH3 domains of several proteins including the ABL1 and SYK protein tyrosine kinases, and functions as a cytoplasmic adaptor protein to positively regulate transcriptional activity in T, natural killer (NK), and basophilic cells. Mutations in this gene result in cherubism. Multiple transcript variants encoding different isoforms have been found for this gene. [provided by RefSeq, Mar 2009]

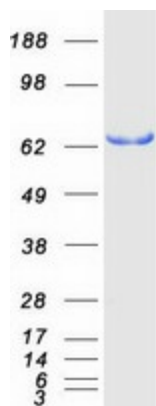
Product images:



Circular map for RC205759



Western blot validation of overexpression lysate (Cat# [LY426549]) using anti-DDK antibody (Cat# [TA50011-100]). Left: Cell lysates from untransfected HEK293T cells; Right: Cell lysates from HEK293T cells transfected with [RC225960] using transfection reagent MegaTran 2.0 (Cat# [TT210002]).



Coomassie blue staining of purified SH3BP2 protein (Cat# [TP305759]). The protein was produced from HEK293T cells transfected with SH3BP2 cDNA clone (Cat# RC205759) using MegaTran 2.0 (Cat# [TT210002]).