

Product datasheet for **RC205754**

DEK (NM_003472) Human Tagged ORF Clone

Product data:

Product Type:	Expression Plasmids
Product Name:	DEK (NM_003472) Human Tagged ORF Clone
Tag:	Myc-DDK
Symbol:	DEK
Synonyms:	D6S231E
Mammalian Cell Selection:	Neomycin
Vector:	pCMV6-Entry (PS100001)
E. coli Selection:	Kanamycin (25 ug/mL)
ORF Nucleotide Sequence:	>RC205754 ORF sequence Red=Cloning site Blue=ORF Green=Tags(s)

TTTTGTAATACGACTCACTATAGGGCGGCCGGAATTCGTCGACTGGATCCGGTACCGAGGAGATCTGCC
GCC**CGATCGC**

ATGTCGCGCTCGGCCCTGCTGCGGAGGGGAGGGAACCCCAACCCAGCCCGCTCCGAGAAAGAACCCG
AAATGCCCGTCCAGAGAGGAGAGCGAGGAGGAAGAGGACGAGGACGACGAGGAGGAGGAGGAGGA
AAAAGAAAAGAGTCTCATCGTGAAGGCAAGAGGGAAAAGAAAAAGTAGAGAGGTTGACAATGCAAGTC
TCTTCCTACAGAGAGAGCCATTTACAATTGCACAAGGAAAGGGCAGAACTTTGTGAAATTGAGAGGA
TACATTTTTTTCTAAGTAAGAAGAAAACCGATGAACCTTAGAAATCTACACAACTGCTTTACAACAGGCC
AGGCACTGTGTCTCATTAAAGAAGAATGTGGTCAGTTCAGTGGCTTTCCATTTGAAAAAGGAAGTGTC
CAATATAAAAAGGAAGAAATGTTGAAAAATTTAGAAATGCCATGTTAAAGAGCATCTGTGAGGTTCT
TTGATTTGGAGAGATCAGGTGTAATAGTGAACCTAGTGAAGAGGATCTTGAATTTCTTAATGCATCCAAA
GCCTTCTGGCAAACCATTTGCCGAAATCTAAAAAACTTGTAGCAAAGGCAGTAAAAAGGAACGGAACAGT
TCTGGAATGGCAAGGAAGGCTAAGCGAACCAATGTCTGAAATTTCTGTGAGATGAATCTAGTAGTGATG
AAGATGAAAAGAAAAACAAGGAAGAGTCTTCAGATGATGAAGATAAGAAAAGTGAAGAGGAGCCACCAAA
AAAGACAGCCAAAAGAGAAAAACCTAAACAGAAAGCTACTTCTAAAGTAAAAATCTGTGAAAAGTGCC
AATGTTAAGAAAGCAGATAGCAGCACCAAGAAGAATCAAAACAGTTCCAAAAAGAAAGTGAAGTCTG
AGGATAGTTTCAAGATGATGAACCTTTAATTAAGAAAGTTGAAGAAACCCCTACAGATGAAGAGTTAAAGGA
AACAATAAAGAAATTAAGTGGCCAGTGCTAACTTGAAGAAGTCACAATGAAACAGATTTGAAAAAGGTC
TATGAAATTAATCTACTTATGATTTAACTGAAAGAAAAGATTTCAAAAACACTGTAAAGAGCTAA
TTTCT

ACGCGTACGCGGCCGCTCGAGCAGAACTCATCTCAGAAGAGGATCTGGCAGCAATGATATCCTGGATT
ACAAGGATGACGACGATAAGGTTTAA



[View online »](#)

Protein Sequence: >RC205754 protein sequence
 Red=Cloning site Green=Tags(s)

MSASAPAAEGEGTPTQPASEKEPEMPGPREESEEEDEDEEEEEEEKEKSLIVEGKREKKKVERLTMQV
 SSLQREPFTIAQGKGQKLCEIERIHFFLSKKKTDELRLNLHKLLYNRPGTVSSLKKNVGFSGFPFEKGSV
 QYKKKEEMLKKFRNAMLKSICEVLDLERSGVNSELVKRILNFLMHPKPSGKPLPKSKKTCGSKGSKKERN
 SGMARKAKRTKCEILSDESSSDEDEKKNKESSDDEDEKESEEEPPKKTAKREKPKQKATSKSKSVKSA
 NVKKADSSSTTKKNQNSSKKESESEDDEPLIKKLKPPTDEELKETIKKLLASANLEEVTMKQICKKV
 YENPTYDLTERKDFIKTTVKELIS

TRTRPLEQKLISEEDLAANDILDYKDDDDKV

Chromatograms: https://cdn.origene.com/chromatograms/mk6197_f04.zip

Restriction Sites: SgfI-MluI

Cloning Scheme:



ACCN: NM_003472

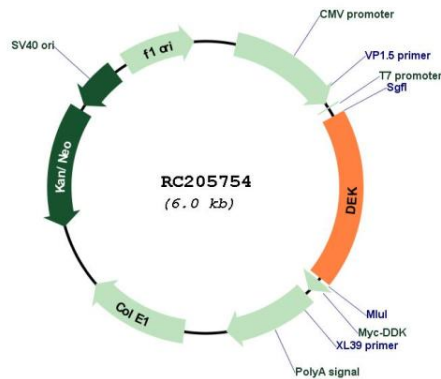
ORF Size: 1125 bp

OTI Disclaimer: Due to the inherent nature of this plasmid, standard methods to replicate additional amounts of DNA in E. coli are highly likely to result in mutations and/or rearrangements. Therefore, OriGene does not guarantee the capability to replicate this plasmid DNA. Additional amounts of DNA can be purchased from OriGene with batch-specific, full-sequence verification at a reduced cost. Please contact our customer care team at custsupport@origene.com or by calling 301.340.3188 option 3 for pricing and delivery.

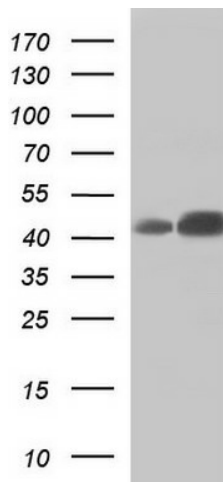
The molecular sequence of this clone aligns with the gene accession number as a point of reference only. However, individual transcript sequences of the same gene can differ through naturally occurring variations (e.g. polymorphisms), each with its own valid existence. This clone is substantially in agreement with the reference, but a complete review of all prevailing variants is recommended prior to use. [More info](#)

OTI Annotation:	This clone was engineered to express the complete ORF with an expression tag. Expression varies depending on the nature of the gene.
Components:	The ORF clone is ion-exchange column purified and shipped in a 2D barcoded Matrix tube containing 10ug of transfection-ready, dried plasmid DNA (reconstitute with 100 ul of water).
Reconstitution Method:	<ol style="list-style-type: none"> 1. Centrifuge at 5,000xg for 5min. 2. Carefully open the tube and add 100ul of sterile water to dissolve the DNA. 3. Close the tube and incubate for 10 minutes at room temperature. 4. Briefly vortex the tube and then do a quick spin (less than 5000xg) to concentrate the liquid at the bottom. 5. Store the suspended plasmid at -20°C. The DNA is stable for at least one year from date of shipping when stored at -20°C.
Note:	Plasmids are not sterile. For experiments where strict sterility is required, filtration with 0.22um filter is required.
RefSeq:	NM_003472.4
RefSeq Size:	2879 bp
RefSeq ORF:	1128 bp
Locus ID:	7913
UniProt ID:	P35659
Cytogenetics:	6p22.3
Domains:	SAP
Protein Families:	Druggable Genome, Transcription Factors
MW:	42.7 kDa
Gene Summary:	This gene encodes a protein with one SAP domain. This protein binds to cruciform and superhelical DNA and induces positive supercoils into closed circular DNA, and is also involved in splice site selection during mRNA processing. Chromosomal aberrations involving this region, increased expression of this gene, and the presence of antibodies against this protein are all associated with various diseases. Two transcript variants encoding different isoforms have been found for this gene. [provided by RefSeq, Sep 2008]

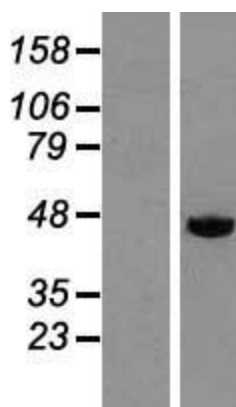
Product images:



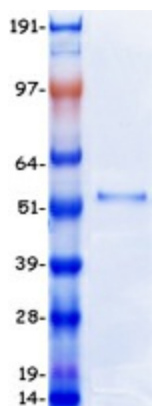
Circular map for RC205754



HEK293T cells were transfected with the pCMV6-ENTRY control (Cat# [PS100001], Left lane) or pCMV6-ENTRY DEK (Cat# RC205754, Right lane) cDNA for 48 hrs and lysed. Equivalent amounts of cell lysates (5 ug per lane) were separated by SDS-PAGE and immunoblotted with anti-DEK (Cat# [TA590653]). Positive lysates [LY418656] (100ug) and [LC418656] (20ug) can be purchased separately from OriGene.



Western blot validation of overexpression lysate (Cat# [LY418656]) using anti-DDK antibody (Cat# [TA50011-100]). Left: Cell lysates from untransfected HEK293T cells; Right: Cell lysates from HEK293T cells transfected with RC205754 using transfection reagent MegaTran 2.0 (Cat# [TT210002]).



Coomassie blue staining of purified DEK protein (Cat# [TP305754]). The protein was produced from HEK293T cells transfected with DEK cDNA clone (Cat# RC205754) using MegaTran 2.0 (Cat# [TT210002]).