

Product datasheet for **RC205753**

STAT5A (NM_003152) Human Tagged ORF Clone

Product data:

Product Type:	Expression Plasmids
Product Name:	STAT5A (NM_003152) Human Tagged ORF Clone
Tag:	Myc-DDK
Symbol:	STAT5A
Synonyms:	MGF; STAT5
Mammalian Cell Selection:	Neomycin
Vector:	pCMV6-Entry (PS100001)
E. coli Selection:	Kanamycin (25 ug/mL)



[View online »](#)

ORF Nucleotide Sequence:

>RC205753 representing NM_003152
 Red=Cloning site Blue=ORF Green=Tags(s)

TTTTGTAATACGACTCACTATAGGGCGGCCGGAATTCGTCGACTGGATCCGGTACCGAGGAGATCTGCC
 GCC**CGGATCGCC**

ATGGCGGGCTGGATCCAGGCCAGCAGCTGCAGGGAGACGCGCTGCGCCAGATGCAGGTGCTGTACGGCC
 AGCACTTCCCATCGAGGTCCGGCACTACTTGGCCAGTGGATTGAGAGCCAGCCATGGGATGCCATTGA
 CTTGGACAATCCCAGGACAGAGCCCAAGCCACCCAGCTCCTGGAGGGCCTGGTGCAGGAGCTGCAGAAG
 AAGGCGGAGCACCAGGTGGGGAAGATGGGTTTTACTGAAGATCAAGCTGGGGCACTACGCCACGCAGC
 TCCAGAAAACATATGACCCTGCCCTGGAGCTGGTCCGCTGCATCCGGCACATTCTGTACAATGAACA
 GAGGCTGGTCCGAGAAGCAACAATTGCAGCTCTCCGGCTGGGATCCTGGTTGACCCATGTCCCAGAAG
 CACCTTCAGATCAACCAGACATTTGAGGAGCTGCGACTGGTCACGCAGGACACAGAGAATGAGCTGAAGA
 AACTGCAGCAGACTCAGGAGTACTTCATCATCCAGTACCAGGAGAGCCTGAGGATCCAAGCTCAGTTTGC
 CCAGCTGGCCAGCTGAGCCCCAGGAGCGTCTGAGCCGGGAGACGGCCCTCCAGCAGAAGCAGGTGTCT
 CTGGAGGCTGGTTGCAGCGTGAGGCACAGACACTGCAGCAGTACCGCTGGAGCTGGCCGAGAAGCACC
 AGAAGACCCTGCAGCTGCTGCGGAAGCAGCAGACCATCATCTGGATGACGAGCTGATCCAGTGGAAAGCG
 GCGGCAGCAGCTGGCCGGGAACGGCGGGCCCCCGAGGGCAGCCTGGACGTGCTACAGTCCCTGGTGTGAG
 AAGTTGGCCGAGATCATCTGGCAGAACCAGCAGCAGATCCGCAGGGCTGAGCACCTCTGCCAGCAGCTGC
 CCATCCCCGGCCAGTGGAGGAGATGCTGGCCGAGGTCAACGCCACCATCACGGACATTATCTCAGCCCT
 GGTGACCAGCACATTCATTGAGAAGCAGCCTCCTCAGGTCTGAAGACCCAGACCAAGTTTGCAGCC
 ACCGTACGCCCTGCTGGTGGCGGGAAGCTGAACGTGCACATGAATCCCCCAGGTGAAGGCCACCATCA
 TCAGTGAGCAGCAGGCCAAGTCTCTGCTTAAAAATGAGAACACCCGCAACGAGTGCAGTGGTGAATCCT
 GAACAACCTGCTGCGTGATGGAGTACCACCAAGCCACGGGCACCCTCAGTGCACCCTTCAGGAACATGTCA
 CTGAAGAGGATCAAGCGTCTGACCGCGGGGTGCAGAGTCCGTGACAGAGGAGAAGTTCACAGTCTGT
 TTGAGTCTCAGTTCAGTGTGGCAGCAATGAGCTTGTGTTCCAGGTGAAGACTCTGTCCCTACCTGTGGT
 TGTTCATCGTCCACGGCAGCCAGGACCACAATGCCACGGCTACTGTGCTGTGGGACAATGCCTTTGCTGAG
 CCGGGCAGGGTGCCATTTGCCGTGCCTGACAAAGTGTGTGGCCGACGCTGTGTGAGGCGCTCAACATGA
 AATTCAAGGCCGAAGTGCAGAGCAACCGGGCCTGACCAAGGAGAACCTCGTGTCTCCTGGCGCAGAACT
 GTTCAACAACAGCAGCAGCCACCTGGAGGACTACAGTGGCCTGTCCGTGCTCCTGGTCCCAGTTCAACAGG
 GAGAACTTGCCGGCTGGAACCTACACTTCTGGCAGTGGTTTACGGGGTGTGAGGTTGTAAGAAGC
 ACCACAAGCCCCACTGGAATGATGGGGCCATCCTAGGTTTTGTGAATAAGCAACAGGCCACGACCTGCT
 CATCAACAAGCCCGACGGGACCTTCTTGTGCGCTTTAGTGACTCAGAAATCGGGGGCATACCATCGCC
 TGGAAGTTGACTCCCCGGAACGCAACCTGTGGAACCTGAAACCATTACCACGCGGGATTTCTCCATCA
 GGTCCCTGGCTGACCGGCTGGGGACCTGAGCTATCTCATCTATGTGTTTCTGACCGCCCCAAGGATGA
 GGTCTTCTCAAGTACTACACTCTGTGCTGGCTAAAGCTGTTGATGGATATGTGAAACCACAGATCAAG
 CAAGTGGTCCCTGAGTTTGTGAATGCATCTGCAGATGCTGGGGCAGCAGCGCCACGTACATGGACCAGG
 CCCCCTCCCAGCTGTGTGCCCCAGGCTCCCTATAACATGTACCCACAGAACCCTGACCATGTACTCGA
 TCAGGATGGAGAATTCGACCTGGATGAGACCATGGATGTGGCCAGGCACGTGGAGGAACTTTACGCCGA
 CCAATGGACAGTCTTGACTCCCGCTCTCGCCCCCTGCCGGTCTTTTACCTCTGCCAGAGGCTCCCTCT
 CA

ACGCGTACGCGGCCGCTCGAGCAGAACTCATCTCAGAAGAGGATCTGGCAGCAATGATATCCTGGATT
 ACAAGGATGACGACGATAAGGTTTAA

Protein Sequence: >RC205753 representing NM_003152
Red=Cloning site Green=Tags(s)

MAGWIIQAQQQLQGDALRQMQLVYGQHFPIEVRHYLAQWIESQPWDAIDLDPQDRAQATQLLEGLVQELQK
KAEHQVGEDGFLLKIKLGHYATQLQKTYDRCPLELVRCIRHILYNEQRLVREANNCSSPAGILVDAMSQK
HLQINQTFEELRLVTQDTENELKKLQQTQEYFIIQYQESLRIQAQFAQLAQLSPQERLSRETALQQKQVS
LEAWLQREAAQTLQQYRVELAEKHQKTLQLLRKQQTIIIDDELIQWKRRQQLAGNGGPPPEGSLDVLQSWCE
KLAEEIIWQNRQQIRRAEHLCCQLPIPGPVEEMLAEVNATITDIIISALVTSTFIIIEKQPPQVLKTQTKFAA
TVRLLVGGKLVNVMNPPQVKATIIISQQAKSLLKNENTRNECSGEILNCCVMEYHQATGTLSAHFRNMS
LKRIKRADRRGAESVTEEKFTVLFESQFSVGSNELVFQVKTLVSLPVVIVHGSQDHNATATVLDWNAFAE
PGRVPFAVPDKVLWPQLCEALNMKFAEVQSNRGLTKENLVFLAQKLFNNSSSHLEDYSGLSVSWSQFNR
ENLPGWNYTFWQWFDGMEVLKHHKPHWNDGAILGFVNKQQAHDLLINKPDGTFLLRFSDSEIGGITIA
WKFDSPERNLWNLKPFTRDFSIIRSLADRLGDSLIIYVFPDRPKDEVFSKYYTPVLAKAVDGYVKPQIK
QVVPEFVNASADAGGSSATYMDQAPSPAVCPQAPYNMYPQNPDPVLDQDGEFDLDETMVARHVEELLRR
PMDSLDSRLSPPAGLFTSARGSL

TRTRPLEQKLISEEDLAANDILDYKDDDDKV

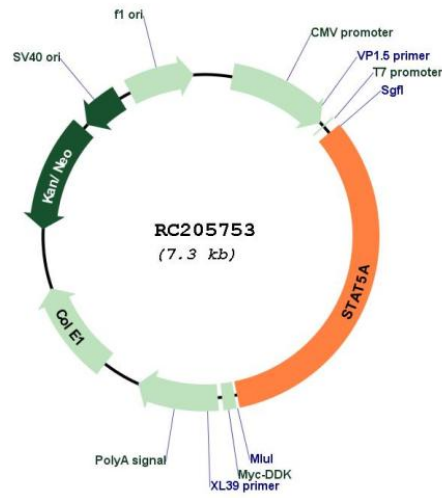
Chromatograms: https://cdn.origene.com/chromatograms/mk8079_c09.zip

Restriction Sites: Sgfl-Mlul

Cloning Scheme:



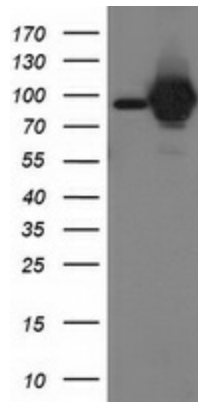
Plasmid Map:



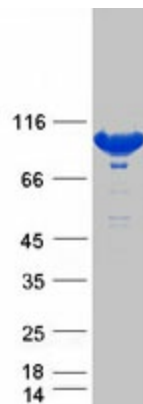
ACCN:	NM_003152
ORF Size:	2382 bp
OTI Disclaimer:	<p>Due to the inherent nature of this plasmid, standard methods to replicate additional amounts of DNA in E. coli are highly likely to result in mutations and/or rearrangements. Therefore, OriGene does not guarantee the capability to replicate this plasmid DNA. Additional amounts of DNA can be purchased from OriGene with batch-specific, full-sequence verification at a reduced cost. Please contact our customer care team at custsupport@origene.com or by calling 301.340.3188 option 3 for pricing and delivery.</p> <p>The molecular sequence of this clone aligns with the gene accession number as a point of reference only. However, individual transcript sequences of the same gene can differ through naturally occurring variations (e.g. polymorphisms), each with its own valid existence. This clone is substantially in agreement with the reference, but a complete review of all prevailing variants is recommended prior to use. More info</p>
OTI Annotation:	This clone was engineered to express the complete ORF with an expression tag. Expression varies depending on the nature of the gene.
Components:	The ORF clone is ion-exchange column purified and shipped in a 2D barcoded Matrix tube containing 10ug of transfection-ready, dried plasmid DNA (reconstitute with 100 ul of water).
Reconstitution Method:	<ol style="list-style-type: none"> 1. Centrifuge at 5,000xg for 5min. 2. Carefully open the tube and add 100ul of sterile water to dissolve the DNA. 3. Close the tube and incubate for 10 minutes at room temperature. 4. Briefly vortex the tube and then do a quick spin (less than 5000xg) to concentrate the liquid at the bottom. 5. Store the suspended plasmid at -20°C. The DNA is stable for at least one year from date of shipping when stored at -20°C.
RefSeq:	NM_003152.3 , NP_003143.2
RefSeq Size:	4298 bp
RefSeq ORF:	2385 bp
Locus ID:	6776
UniProt ID:	P42229
Cytogenetics:	17q21.2
Domains:	SH2, STAT
Protein Families:	Druggable Genome, ES Cell Differentiation/IPS, Stem cell relevant signaling - DSL/Notch pathway, Stem cell relevant signaling - JAK/STAT signaling pathway, Transcription Factors
Protein Pathways:	Acute myeloid leukemia, Chronic myeloid leukemia, ErbB signaling pathway, Jak-STAT signaling pathway, Pathways in cancer
MW:	90.5 kDa

Gene Summary:

The protein encoded by this gene is a member of the STAT family of transcription factors. In response to cytokines and growth factors, STAT family members are phosphorylated by the receptor associated kinases, and then form homo- or heterodimers that translocate to the cell nucleus where they act as transcription activators. This protein is activated by, and mediates the responses of many cell ligands, such as IL2, IL3, IL7 GM-CSF, erythropoietin, thrombopoietin, and different growth hormones. Activation of this protein in myeloma and lymphoma associated with a TEL/JAK2 gene fusion is independent of cell stimulus and has been shown to be essential for tumorigenesis. The mouse counterpart of this gene is found to induce the expression of BCL2L1/BCL-X(L), which suggests the antiapoptotic function of this gene in cells. Alternatively spliced transcript variants have been found for this gene. [provided by RefSeq, Dec 2013]

Product images:

HEK293T cells were transfected with the pCMV6-ENTRY control (Cat# [PS100001], Left lane) or pCMV6-ENTRY STAT5A (Cat# RC205753, Right lane) cDNA for 48 hrs and lysed. Equivalent amounts of cell lysates (5 ug per lane) were separated by SDS-PAGE and immunoblotted with anti-STAT5A(Cat# [TA502736]). Positive lysates [LY418866] (100ug) and [LC418866] (20ug) can be purchased separately from OriGene.



Coomassie blue staining of purified STAT5A protein (Cat# [TP305753]). The protein was produced from HEK293T cells transfected with STAT5A cDNA clone (Cat# RC205753) using MegaTran 2.0 (Cat# [TT210002]).