

Product datasheet for **RC205751**

FXR1 (NM_001013438) Human Tagged ORF Clone

Product data:

Product Type:	Expression Plasmids
Product Name:	FXR1 (NM_001013438) Human Tagged ORF Clone
Tag:	Myc-DDK
Symbol:	FXR1
Synonyms:	FXR1P; MYOPMIL; MYORIBF
Mammalian Cell Selection:	Neomycin
Vector:	pCMV6-Entry (PS100001)
E. coli Selection:	Kanamycin (25 ug/mL)



[View online »](#)

ORF Nucleotide Sequence:

>RC205751 ORF sequence
 Red=Cloning site Blue=ORF Green=Tags(s)

TTTTGTAATACGACTCACTATAGGGCGGCCGGAATTCGTCGACTGGATCCGGTACCGAGGAGATCTGCC
 GCC**CGCATCGCC**

ATGGCGGAGCTGACGGTGGAGGTTGCGGGCTCTAACGGGGCTTTCTACAAGGATTTATCAAAGATGTTCT
 ATGAAGACTCCCTTACAGTTGTTTTGAAAATAATTGGCAACCAGAACGCCAGGTTCCATTTAATGAAGT
 TAGATTACCACCACCACCTGATATAAAAAAAGAAATTAGTGAAGGAGATGAAGTAGAGGTATATTCAAGA
 GCAAAATGACCAAGAGCCATGTGGGTGGTGGTTGGCTAAAGTTCGGATGATGAAAGGAGAATTTTATGTCA
 TTGAATATGCTGCTTGTGACGCTACTTACAATGAAATAGTCACATTTGAACGACTTCGGCCTGTCAATCA
 AAATAAACTGTCAAAAAAATACCTTCTTTAAATGCACAGTGGATGTTCTGAGGATTTGAGAGAGGCG
 TGTGCTAATGAAAATGCACATAAAGATTTAAGAAAGCAGTAGGAGCATGCAGAATTTTTTACCATCCAG
 AAACAACACAGCTAATGATACTGTCTGCCAGTGAAGCAACTGTGAAGAGAGTAAACATCTTAAGTGACAT
 GCATTTGCGAAGTATTCGTACGAAGTTGATGCTTATGTCCAGAAATGAAGAGGCCACTAAGCATTTAGAA
 TGCACAAAACAACTTGCAGCAGCTTTTCATGAGGAATTTGTTGTGAGAGAAGATTTAATGGGCCTGGCAA
 TAGGAACACATGGTAGTAACATCCAGCAAGCTAGGAAGGTTTCTGGAGTTACCGCCATTGAGCTAGATGA
 AGATACTGGAACATTCAGAATCTACGGAGAGAGTCTGATGCTGTAAAAAAGGCTAGAGGTTTCTTGAA
 TTTGTGGAGGATTTTATTCAGGTTCTAGGAATCTCGTTGGAAAAGTAAATGGAAAAATGGCAAAGTTA
 TTCAAGAAATAGTGGACAAAATCTGGTGTGGTTCGAGTGAGAATGAAGGGGACAATGAAAATAAATTACC
 CAGAGAAGACGGTATGGTCCATTTGTATTTGTTGGCACTAAAGAAAGCATTGGAATGTGCAGGTTCTT
 CTAGAGTATCATATTGCCTATCTAAAGGAAGTAGAACAGCTAAGAATGGAACGCCTACAGATTGATGAAC
 AGCTGCGACAGATTGGTCTAGGCTTTATAGCGGAAGAGGCAGAGGTCGTCGGGGACCTAATTACACCTC
 CGGTTATGGTACAAATTCGAGCTGTCTAACCCCTCTGAAACGGAATCTGAGCGTAAAGACGAGCTGAGT
 GATTGGTCATTGGCAGGAGAAGATGATCGAGACAGCCGACATCAGCGTGACAGCAGGAGAGCGCCAGGAG
 GAAGAGGCAGAAGTGTTCAGGGGGTCGAGGTCGTTGGTGGACCACGTGGTGGCAAATCCTCCATCAGTTC
 TGTGCTCAAAGATCCAGACAGCAATCCATACAGCTTACTTGATAATACAGAATCAGATCAGACTGCAGAC
 ACTGATGCCAGCAATCTCATCACAGTACTAACCGTCGAGGCGGTCGTCGAGCAGGAGGACTGATGAAG
 ATGCTGTTCTGATGGATGGAATGACTGAATCTGATACAGCTTCAGTTAATGAAAATGGGCTAGGCAAAAG
 ATGTGAT

ACGCGTACGCGGCCGCTCGAGCAGAAACTCATCTCAGAAGAGGATCTGGCAGCAAATGATATCCTGGATT
 ACAAGGATGACGACGATAAGGTTTAA

Protein Sequence:

>RC205751 protein sequence
 Red=Cloning site Green=Tags(s)

MAELTVEVRGNSNGAFYKGFIKDVHEDSLTVVFENNWPQRQVPPFNEVRLPPPPDIKKEISEGDEVEVYSR
 ANDQEPGWWLAKVRMMKGEFYVIEYAACDATYNEIVTFERLRPNQNKTVKNTFFKCTVDVPEDLREA
 CANENAHKDFKAVGACRIFYHPETTQLMILSASEATVKRVNLSMDHLRSIRTKLMLMSRNEEATKHLE
 CTKQLAAAFHEEFVVREDLMGLAIGTHGSNIQQARKVPGVTAIELDEDTGTFRIYGESADAVKKARGFLE
 FVEDFIQVPRNLVGKVIKNGKVIQEIVDKSGVVRVRIEGDNENKLPREDGMVPFVFGTKESIGNVQVL
 LEYHIAYLKEVEQLRMRERLQIDEQLRQIGRSYSYGRGRRRPNYTSYGTNSEL SNPSETESERKDELS
 DWSLAGEDDRDSRHQRDSRRRPPGGRGRSVSGRGRGGPRGGKSSISSVLKDPDSNPYSLLDNTESDQTAD
 TDASESHHSTNRRRRRRTDEDAVLMDGMTESDTASVNEENGLKRC

TRTRPLEQKLISEEDLAANDILDYKDDDDKV

Chromatograms:

https://cdn.origene.com/chromatograms/mk6521_c07.zip

Restriction Sites:

Sgfl-MluI

Cloning Scheme:

ACCN: NM_001013438

ORF Size: 1617 bp

OTI Disclaimer: The molecular sequence of this clone aligns with the gene accession number as a point of reference only. However, individual transcript sequences of the same gene can differ through naturally occurring variations (e.g. polymorphisms), each with its own valid existence. This clone is substantially in agreement with the reference, but a complete review of all prevailing variants is recommended prior to use. [More info](#)

OTI Annotation: This clone was engineered to express the complete ORF with an expression tag. Expression varies depending on the nature of the gene.

Components: The ORF clone is ion-exchange column purified and shipped in a 2D barcoded Matrix tube containing 10ug of transfection-ready, dried plasmid DNA (reconstitute with 100 ul of water).

Reconstitution Method:

1. Centrifuge at 5,000xg for 5min.
2. Carefully open the tube and add 100ul of sterile water to dissolve the DNA.
3. Close the tube and incubate for 10 minutes at room temperature.
4. Briefly vortex the tube and then do a quick spin (less than 5000xg) to concentrate the liquid at the bottom.
5. Store the suspended plasmid at -20°C. The DNA is stable for at least one year from date of shipping when stored at -20°C.

RefSeq: [NM_001013438.3](#)
RefSeq Size: 8475 bp

RefSeq ORF: 1620 bp

Locus ID: 8087

UniProt ID: [P51114](#)

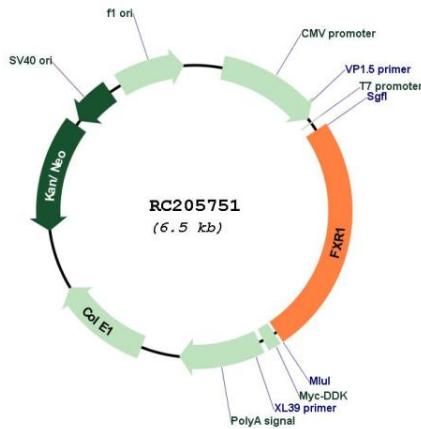
Cytogenetics: 3q26.33

Protein Families: Druggable Genome

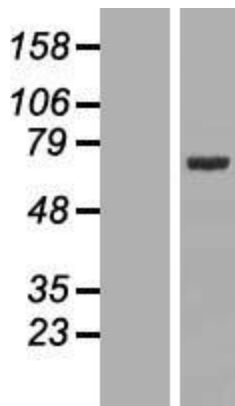
MW: 60.8 kDa

Gene Summary: The protein encoded by this gene is an RNA binding protein that interacts with the functionally-similar proteins FMR1 and FXR2. These proteins shuttle between the nucleus and cytoplasm and associate with polyribosomes, predominantly with the 60S ribosomal subunit. Three transcript variants encoding different isoforms have been found for this gene. [provided by RefSeq, Jul 2008]

Product images:



Circular map for RC205751



Western blot validation of overexpression lysate (Cat# [LY422975]) using anti-DDK antibody (Cat# [TA50011-100]). Left: Cell lysates from untransfected HEK293T cells; Right: Cell lysates from HEK293T cells transfected with RC205751 using transfection reagent MegaTran 2.0 (Cat# [TT210002]).