

## Product datasheet for RC205750

### ST3GAL6 (NM\_006100) Human Tagged ORF Clone

#### Product data:

Product Type:	Expression Plasmids
Product Name:	ST3GAL6 (NM_006100) Human Tagged ORF Clone
Tag:	Myc-DDK
Symbol:	ST3GAL6
Synonyms:	SIAT10; ST3GALVI
Mammalian Cell Selection:	Neomycin
Vector:	pCMV6-Entry (PS100001)
E. coli Selection:	Kanamycin (25 ug/mL)
ORF Nucleotide Sequence:	>RC205750 ORF sequence Red=Cloning site Blue=ORF Green=Tags(s)

TTTTGTAATACGACTCACTATAGGGCGGCCGGAATTCGTCGACTGGATCCGGTACCGAGGAGATCTGCC  
GCC**CGATCGCC**

ATGAGAGGGTATCTTGTGGCCATATTCCTGAGTGCTGCTTCTCTATTATGTAAGTGCATTGCATATTAT  
GGGGAACGAATGTCTATTGGGTGGCACCTGTGGAAATGAAACGGAGAAATAAGATCCAGCCTTGTTTATC  
AAAGCCAGCTTTTGCCTCTCTGCTGAGGTTTCATCAGTTTACCCTTTTCTGTGTGCGGCTGATTTTAGA  
AAGATTGCTTCTTGTATGGTAGCGATAAGTTTGATTTGCCCTATGGGATGAGAACATCAGCGGAATATT  
TTCGACTTGCTCTTTCAAACCTGCAGAGTTGTGATCTCTTTGATGAGTTTGACAACATACCCTGTAAAA  
GTGTGTGGTGGTTGGTAATGGAGGAGTTTTGAAGAATAAGACATTAGGAGAAAAATCGACTCCTATGAT  
GTAATAATAAGAATGAATAATGGTCCTGTTTTAGGACATGAAGAAGAAGTTGGGAGAAGGACAACCTTCC  
GACTTTTTTATCCAGAATCTGTTTTTTCAGATCCTATTCAAAATGACCCTAATACGACAGTGATTCTCAC  
TGCTTTTAAGCCACATGATTTAAGGTGGCTGTTGGAATTGTTGATGGGTGACAAAATAAACACTAATGGT  
TTTTGGAAGAAACCAGCCTTAAACCTGATTATAAACCTTATCAAATCCGAATATTAGATCCTTTTCATTA  
TCAGAACAGCAGCTTATGAACTGCTTCATTTTCCAAAAGTGTTCCTCAAAAATCAGAAACCTAAACACCC  
AACAAACAGGAATTATTGCCATCACATTGGCGTTTTACATATGTCACGAAGTTCACCTAGCTGGTTTTAAA  
TACAACCTTTCTGACCTCAAGAGTCCTTTGCACTACTATGGGAATGCCACCATGTCTTTGATGAATAAGA  
ACGCGTATCAAAATGTGACTGCAGAGCAGCTCTTTTTGAAGGACATTATAGAAAAAACCTCGTAATCAA  
CTTGACTCAAGAT

AG**CGGACCG**ACGCGTACGCGGCCGCTCGAGCAGAACTCATCTCAGAAGAGGATCTGGCAGCAAATGATATCC  
TGGATTACAAGGATGACGACGATAAGGTTTAA



[View online »](#)

**Protein Sequence:** >RC205750 protein sequence  
Red=Cloning site Green=Tags(s)

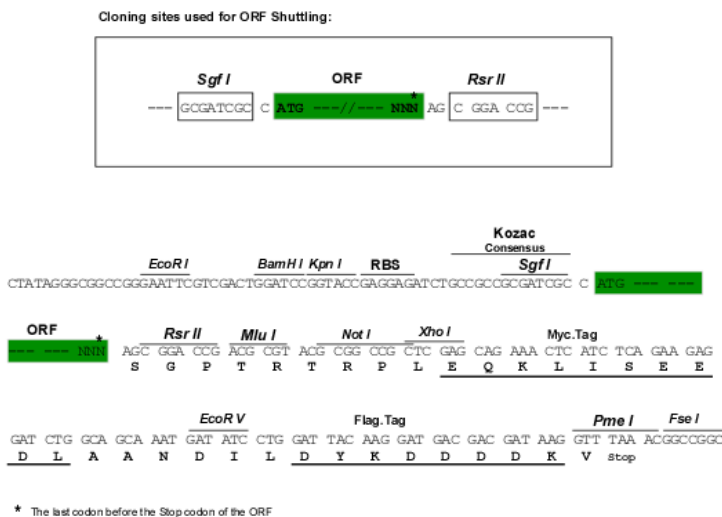
MRGYLVAIFLSAVFLYYVLHCILWGTNVYVWVAVEMKRRNKIQPCLSKPAFASLLRFHQFHPFLCAADFR  
 KIASLYGSDKFDLPYGMRTSAEYFRLALSKLQSCDLFDEFDNIPCKKCVVVGNGGVLKKNKTLGEKIDSYD  
 VIIRMNNGPVLGHEEEVGRRTTFRLFYPEVSFSDPIHNDPNTTVILTAFKPHDLRWLLELLMGDKINTNG  
 FWKKPALNLIYKPYQIRILDPIIIRTAAYELLHFVKVFPKNQPKHPTTGIIAITLAFYICHEVHLGFK  
 YNFSDLKSPHYGNATMSLMKNAYHNVTAEQLFLKDIIEKNLVINLTQD

SGPTRTRPLEQKLI SEEDLAANDILDYKDDDDKV

**Chromatograms:** [https://cdn.origene.com/chromatograms/mk6801\\_h04.zip](https://cdn.origene.com/chromatograms/mk6801_h04.zip)

**Restriction Sites:** SgfI-RsrII

**Cloning Scheme:**



**ACCN:** NM\_006100

**ORF Size:** 993 bp

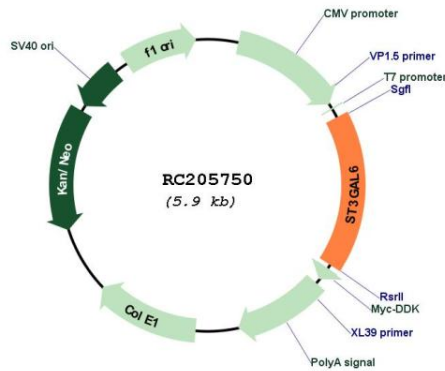
**OTI Disclaimer:** The molecular sequence of this clone aligns with the gene accession number as a point of reference only. However, individual transcript sequences of the same gene can differ through naturally occurring variations (e.g. polymorphisms), each with its own valid existence. This clone is substantially in agreement with the reference, but a complete review of all prevailing variants is recommended prior to use. [More info](#)

**OTI Annotation:** This clone was engineered to express the complete ORF with an expression tag. Expression varies depending on the nature of the gene.

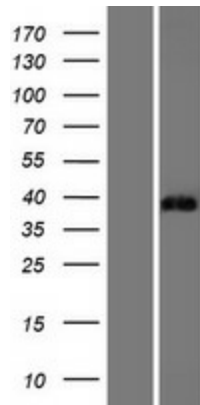
**Components:** The ORF clone is ion-exchange column purified and shipped in a 2D barcoded Matrix tube containing 10ug of transfection-ready, dried plasmid DNA (reconstitute with 100 ul of water).

<b>Reconstitution Method:</b>	<ol style="list-style-type: none"><li>1. Centrifuge at 5,000xg for 5min.</li><li>2. Carefully open the tube and add 100ul of sterile water to dissolve the DNA.</li><li>3. Close the tube and incubate for 10 minutes at room temperature.</li><li>4. Briefly vortex the tube and then do a quick spin (less than 5000xg) to concentrate the liquid at the bottom.</li><li>5. Store the suspended plasmid at -20°C. The DNA is stable for at least one year from date of shipping when stored at -20°C.</li></ol>
<b>RefSeq:</b>	<a href="#">NM_006100.3</a>
<b>RefSeq Size:</b>	3571 bp
<b>RefSeq ORF:</b>	996 bp
<b>Locus ID:</b>	10402
<b>UniProt ID:</b>	<a href="#">Q9Y274</a>
<b>Cytogenetics:</b>	3q12.1
<b>Domains:</b>	Glyco_transf_29
<b>Protein Families:</b>	Transmembrane
<b>Protein Pathways:</b>	Glycosphingolipid biosynthesis - lacto and neolacto series, Metabolic pathways
<b>MW:</b>	38.2 kDa
<b>Gene Summary:</b>	<p>The protein encoded by this gene is a member of the sialyltransferase family. Members of this family are enzymes that transfer sialic acid from the activated cytidine 5'-monophospho-N-acetylneuraminic acid to terminal positions on sialylated glycolipids (gangliosides) or to the N- or O-linked sugar chains of glycoproteins. This protein has high specificity for neolactotetraosylceramide and neolactohexaosylceramide as glycolipid substrates and may contribute to the formation of selectin ligands and sialyl Lewis X, a carbohydrate important for cell-to-cell recognition and a blood group antigen. [provided by RefSeq, Apr 2016]</p>

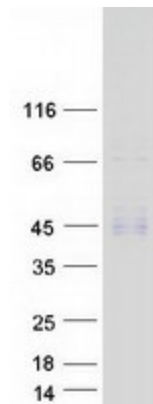
Product images:



Circular map for RC205750



Western blot validation of overexpression lysate (Cat# [LY416864]) using anti-DDK antibody (Cat# [TA50011-100]). Left: Cell lysates from untransfected HEK293T cells; Right: Cell lysates from HEK293T cells transfected with RC205750 using transfection reagent MegaTran 2.0 (Cat# [TT210002]).



Coomassie blue staining of purified ST3GAL6 protein (Cat# [TP305750]). The protein was produced from HEK293T cells transfected with ST3GAL6 cDNA clone (Cat# RC205750) using MegaTran 2.0 (Cat# [TT210002]).