

Product datasheet for RC205747

IL36RN (NM_173170) Human Tagged ORF Clone

Product data:

Product Type: Expression Plasmids
Product Name: IL36RN (NM_173170) Human Tagged ORF Clone
Tag: Myc-DDK
Symbol: IL36RN
Synonyms: FIL1; FIL1(DELTA); FIL1D; IL-36Ra; IL1F5; IL1HY1; IL1L1; IL1RP3; IL36RA; PSORP; PSORS14
Mammalian Cell Selection: Neomycin
Vector: pCMV6-Entry (PS100001)
E. coli Selection: Kanamycin (25 ug/mL)
ORF Nucleotide Sequence: >RC205747 ORF sequence
 Red=Cloning site Blue=ORF Green=Tags(s)

TTTTGTAATACGACTCACTATAGGGCGGCCGGAATTCGTCGACTGGATCCGGTACCGAGGAGATCTGCC
GCC**CGATCGCC**

ATGGTCCTGAGTGGGGCGCTGTGCTTCCGAATGAAGGACTCGGCATTGAAGGTGCTTTATCTGCATAATA
ACCAGTCTTAGCTGGAGGGCTGCATGCAGGGAAGGTCATTAAGGTGAAGAGATCAGCGTGGTCCCCAA
TCGGTGGCTGGATGCCAGCCTGTCCCCGTCATCCTGGGTGTCCAGGGTGAAGCCAGTGCCTGTCATGT
GGGGTGGGGCAGGAGCCGACTCTAACACTAGAGCCAGTGAACATCATGGAGCTCTATCTTGGTGCCAAGG
AATCCAAGAGCTTCACTTCTACCGCGGGACATGGGGCTCACCTCCAGCTTCGAGTCGGCTGCCTACCC
GGGCTGGTTCCTGTGCACGGTGCCTGAAGCCGATCAGCCTGTGAGACTCACCCAGCTTCCCGAGAATGGT
GGCTGGAATGCCCCATCACAGACTTCTACTTCCAGCAGTGTGAC

ACGCGTACGCGGCCGCTCGAGCAGAACTCATCTCAGAAGAGGATCTGGCAGCAAATGATATCCTGGATT
ACAAGGATGACGACGATAAGGTTTAA

Protein Sequence: >RC205747 protein sequence
Red=Cloning site Green=Tags(s)

MVLSGALCFRMKDSALKVLYLHNNQLLAGGLHAGKVIKGGEEISVVPNRWLDASLSPVILGVQGGSQLCLSC
GVGQEPTLTLEPVNIMELYLGAKESKSFYRRDMGLTSSFESAAYPGWFLCTVPEADQPVRLTQLPENG
GWNAPITDFYFQQCD

TRTRPLEQKLISEEDLAANDILDYKDDDDKV

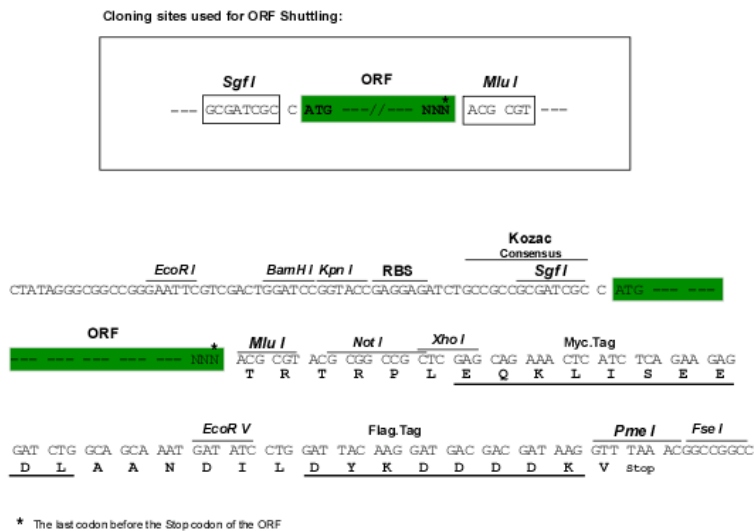
Chromatograms: https://cdn.origene.com/chromatograms/mk6326_g10.zip



View online »

Restriction Sites: SgfI-MluI

Cloning Scheme:



ACCN: NM_173170

ORF Size: 465 bp

OTI Disclaimer: The molecular sequence of this clone aligns with the gene accession number as a point of reference only. However, individual transcript sequences of the same gene can differ through naturally occurring variations (e.g. polymorphisms), each with its own valid existence. This clone is substantially in agreement with the reference, but a complete review of all prevailing variants is recommended prior to use. [More info](#)

OTI Annotation: This clone was engineered to express the complete ORF with an expression tag. Expression varies depending on the nature of the gene.

Components: The ORF clone is ion-exchange column purified and shipped in a 2D barcoded Matrix tube containing 10ug of transfection-ready, dried plasmid DNA (reconstitute with 100 ul of water).

Reconstitution Method:

1. Centrifuge at 5,000xg for 5min.
2. Carefully open the tube and add 100ul of sterile water to dissolve the DNA.
3. Close the tube and incubate for 10 minutes at room temperature.
4. Briefly vortex the tube and then do a quick spin (less than 5000xg) to concentrate the liquid at the bottom.
5. Store the suspended plasmid at -20°C. The DNA is stable for at least one year from date of shipping when stored at -20°C.

RefSeq: [NM_173170.1](#), [NP_775262.1](#)

RefSeq Size: 2689 bp

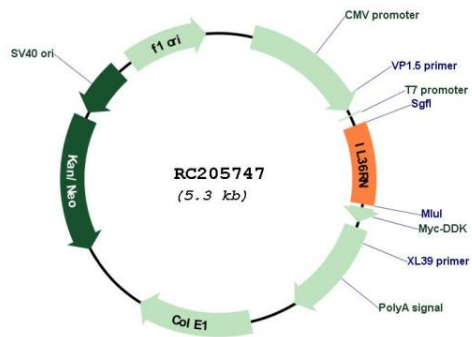
RefSeq ORF: 468 bp

Locus ID: 26525

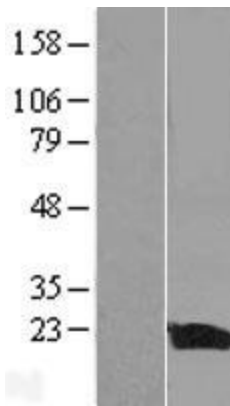
UniProt ID: [Q9UBH0](#)
Cytogenetics: 2q14.1
Protein Families: Druggable Genome, Secreted Protein
MW: 17 kDa

Gene Summary: The protein encoded by this gene is a member of the interleukin 1 cytokine family. This cytokine was shown to specifically inhibit the activation of NF-kappaB induced by interleukin 1 family, member 6 (IL1F6). This gene and eight other interleukin 1 family genes form a cytokine gene cluster on chromosome 2. Two alternatively spliced transcript variants encoding the same protein have been reported. [provided by RefSeq, Jul 2008]

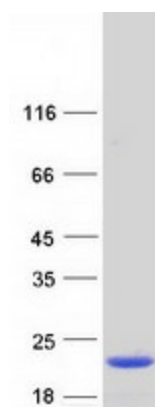
Product images:



Circular map for RC205747



Western blot validation of overexpression lysate (Cat# [LY406658]) using anti-DDK antibody (Cat# [TA50011-100]). Left: Cell lysates from untransfected HEK293T cells; Right: Cell lysates from HEK293T cells transfected with RC205747 using transfection reagent MegaTran 2.0 (Cat# [TT210002]).



Coomassie blue staining of purified IL36RN protein (Cat# [TP305747]). The protein was produced from HEK293T cells transfected with IL36RN cDNA clone (Cat# RC205747) using MegaTran 2.0 (Cat# [TT210002]).