

Product datasheet for RC205745

ABHD4 (NM_022060) Human Tagged ORF Clone

Product data:

Product Type:	Expression Plasmids
Product Name:	ABHD4 (NM_022060) Human Tagged ORF Clone
Tag:	Myc-DDK
Symbol:	ABHD4
Synonyms:	ABH4
Mammalian Cell Selection:	Neomycin
Vector:	pCMV6-Entry (PS100001)
E. coli Selection:	Kanamycin (25 ug/mL)
ORF Nucleotide Sequence:	>RC205745 ORF sequence Red=Cloning site Blue=ORF Green=Tags(s)

TTTTGTAATACGACTCACTATAGGGCGGCCGGAATTCGTCGACTGGATCCGGTACCGAGGAGATCTGCC
GCC**CGATCGCC**

ATGGCCGATGATCTGGAGCAGCAGTCTCAAGGCTGGCTGAGTAGCTGGCTGCCACGTGGCGCCCCACTT
CCATGTCTCAGCTGAAGAATGTGGAAGCCAGGATCCTCCAGTGTCTCCAGAATAAGTTCTGGCCAGATA
TGTATCCCTCCCAAACCAGAATAAGATCTGGACGGTACTGTGAGCCCGAGCAAACGACCGCACCCCC
TTGGTGATGGTGCATGGTTTTGGGGCGGCGTGGGTCTCTGGATCCTCAACATGGACTCACTGAGTGCCC
GCCGCACACTGCACACCTTCGATCTGCTTGGCTTCGGGCGAAGCTCAAGGCCAGCATTCCAAGGGACCC
GGAGGGGGCTGAGGATGAGTTTGTGACATCGATAGAGACATGGCGGGAGACCATGGGGATCCCAGCATG
ATCCTCCTGGGGCACAGTTTGGGAGGATTCTGGCCACTTCTTACTCAATCAAGTACCCTGATAGAGTTA
AACACCTCATCCTGGTGGACCATGGGGCTTCCCTCCGACCAACTAACCCAGTGAGATCCGTGCACC
CCCAGCCTGGGTCAAAGCCGTGGCATCTGTCTAGGACGTTCCAATCCATTGGCTGTTCTTCGAGTAGCT
GGGCCCTGGGGCCTGGTCTGGTGCAGCGATTCCGGCCGACTTCAAACGCAAGTTTGCAGACTTCTTTG
AAGATGATACCATATCAGAGTATATTTACCACTGCAACGCACAGAATCCCAGTGGTGAGACAGCATTCAA
AGCCATGATGGAGTCCTTTGGCTGGGCCCGGCCCTATGCTGGAGCGAATTCACATTGATTCGAAAAGAT
GTGCCATCACTATGATCTACGGGTCCGACACCTGGATAGATACCAGTACGGGAAAAAGGTGAAGATGC
AGCGGCCGATTCTATGTCCGAGACATGGAGATTAAGGGTGCCTCCACCATGTCTATGCTGACCAGCC
ACACATCTTCAATGCTGTGGTGGAGGAGATCTGCGACTCAGTTGAT

ACGCGTACGCGGCCGCTCGAGCAGAACTCATCTCAGAAGAGGATCTGGCAGCAAATGATATCCTGGATT
ACAAGGATGACGACGATAAGGTTTAA



[View online »](#)

Protein Sequence: >RC205745 protein sequence
Red=Cloning site Green=Tags(s)

MADDLEQQSQGWLSSWLPTWRPTSMSQLKNVEARILQCLQNKFLARYVSLPNQNKIWTVTVSPEQND RTP
 LVMVHGFGGVGLWILNMDLSARRTLHTFDLLGGRSSRPAPPRDPEGADEFVTSIETWRETMGIPSM
 ILLGHSLGGFLATSYSIKYPDRVKHLILVDPWGFPLRPTNPSEIRAPPAWKAVASVLRSNPLAVLRVA
 GPWGPGLVQRFRPDFKRKFADFEDDTISEYIYHCNAQNPSGETAFKAMMESFGWARRPMLERIHILRKD
 VPITMIYGSDTWIDTSTGKKVKMQRPDSYVRDMEIKGASHHVYADQPHIFNAVVEEICDSVD

TRTRPLEQKLISEEDLAANDILDYKDDDDKV

Chromatograms: https://cdn.origene.com/chromatograms/mk6327_g11.zip

Restriction Sites: SgfI-MluI

Cloning Scheme:



ACCN: NM_022060

ORF Size: 1026 bp

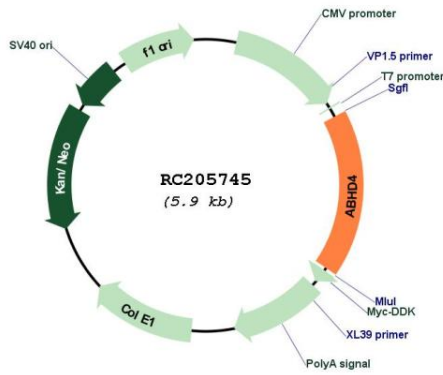
OTI Disclaimer: The molecular sequence of this clone aligns with the gene accession number as a point of reference only. However, individual transcript sequences of the same gene can differ through naturally occurring variations (e.g. polymorphisms), each with its own valid existence. This clone is substantially in agreement with the reference, but a complete review of all prevailing variants is recommended prior to use. [More info](#)

OTI Annotation: This clone was engineered to express the complete ORF with an expression tag. Expression varies depending on the nature of the gene.

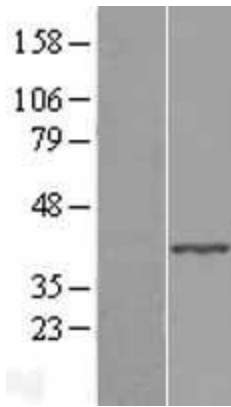
Components: The ORF clone is ion-exchange column purified and shipped in a 2D barcoded Matrix tube containing 10ug of transfection-ready, dried plasmid DNA (reconstitute with 100 ul of water).

Reconstitution Method:	<ol style="list-style-type: none">1. Centrifuge at 5,000xg for 5min.2. Carefully open the tube and add 100ul of sterile water to dissolve the DNA.3. Close the tube and incubate for 10 minutes at room temperature.4. Briefly vortex the tube and then do a quick spin (less than 5000xg) to concentrate the liquid at the bottom.5. Store the suspended plasmid at -20°C. The DNA is stable for at least one year from date of shipping when stored at -20°C.
RefSeq:	NM_022060.2 , NP_071343.2
RefSeq Size:	2543 bp
RefSeq ORF:	1029 bp
Locus ID:	63874
UniProt ID:	Q8TB40
Cytogenetics:	14q11.2
Domains:	abhydrolase
Protein Families:	Protease
MW:	38.8 kDa
Gene Summary:	Lysophospholipase selective for N-acyl phosphatidylethanolamine (NAPE). Contributes to the biosynthesis of N-acyl ethanolamines, including the endocannabinoid anandamide by hydrolyzing the sn-1 and sn-2 acyl chains from N-acyl phosphatidylethanolamine (NAPE) generating glycerophospho-N-acyl ethanolamine (GP-NAE), an intermediate for N-acyl ethanolamine biosynthesis. Hydrolyzes substrates bearing saturated, monounsaturated, polyunsaturated N-acyl chains. Shows no significant activity towards other lysophospholipids, including lysophosphatidylcholine, lysophosphatidylethanolamine and lysophosphatidylserine.[UniProtKB/Swiss-Prot Function]

Product images:



Circular map for RC205745



Western blot validation of overexpression lysate (Cat# [LY411808]) using anti-DDK antibody (Cat# [TA50011-100]). Left: Cell lysates from untransfected HEK293T cells; Right: Cell lysates from HEK293T cells transfected with RC205745 using transfection reagent MegaTran 2.0 (Cat# [TT210002]).