

Product datasheet for **RC205735**

WDR85 (DPH7) (NM_138778) Human Tagged ORF Clone

Product data:

Product Type:	Expression Plasmids
Product Name:	WDR85 (DPH7) (NM_138778) Human Tagged ORF Clone
Tag:	Myc-DDK
Symbol:	WDR85
Synonyms:	C9orf112; RRT2; WDR85
Mammalian Cell Selection:	Neomycin
Vector:	pCMV6-Entry (PS100001)
E. coli Selection:	Kanamycin (25 ug/mL)



[View online »](#)

ORF Nucleotide Sequence:

>RC205735 ORF sequence
 Red=Cloning site Blue=ORF Green=Tags(s)

TTTTGTAATACGACTCACTATAGGGCGGCCGGGAATTCGTCGACTGGATCCGGTACCGAGGAGATCTGCC
 GCC**GCGATCGCC**

ATGATGGGCTGTTTCGCCCTGCAAACGGTGGACACCGAGCTGACCGGGACTCGGTGGAGTGGTGCCCGC
 TGCAAGGCTGCAGGCACCTGCTGGCGTGGGGACCTACCAGCTGCGGGCGCCGGAGGACCGCCTGCCGG
 CCCCCAGAACAAAGGTGGAATGGAAGTTAAGGAGCCTCAGGTCCGTTTAGGCCGCTCTTCTGTACAGT
 TTCAATGACAACAACCTATTACCCCTCTGGTCGAGGTCCAAAGAAAAGATACTTCTGCAATCCTGGACA
 TGAAATGGTGTACATCCCGGTGGCTGGACATGCCCTCTTGGGCTTGGCAGATGCCAGTGGATCCATACA
 ACTGCTCCGCCTGGTGAATCTGAGAAGAGCCACGTGCTGGAGCCATTGTCCAGCCTTGCCTGGAGGAG
 CAGTGTCTGGCTTTGTCCTAGATTGGTCCACTGGGAAAAGTGAAGGGCCGGGACCAGCCCTGAAGA
 TCATCAGCAGTGACTCCACAGGGCAGCTCCACCTCTGATGGTGAATGAGACGAGGCCAGGCTGCAGAA
 AGTGGCCTCATGGCAGGCACATCAATTCGAGGCCTGGATTGCTGCTTTCAATTACTGGCATTCCAGAAAT
 GTGATTACAGGGGGCAGCATGGCCTTCTGAGGGGCTGGGACACCAGGGTACCCGGCAAATTTCTCTTCA
 CCAGCAAAGACACACCATGGGTGTGTGCAGCATCCAGAGCAGCCCTCATCGGGAGCACATCCTGGCCAC
 GGGAAAGCTATGATGAACACATCCTACTGTGGGACACACGAAACATGAAGCAGCCGTTGGCAGATACGCC
 GTGCAGGGTGGGGTATGGAGAATCAAGTGGCACCCCTTCCACCACCACCTGCTCCTGGCCGCTGCATGC
 ACAGTGGCTTTAAGATCCTCAACTGCCAAAAGGCAATGGAGGAGAGGCAGGAGGGCAGCGTCTGACATC
 TCACACATTGCCGACTCGCTGGTGTATGGAGCCGACTGGTCTGGTCTTCCGTTCTCTGCAGCGG
 GCCCCTCGTGGTCTTTCTAGCAACCTAGGAACCAAGACGGCAGACCTGAAGGGTGAAGCGAGTTGC
 CAACACCCTGTATGAATGCAGAGAGGATAACGATGGGGAGGGCCATGCCAGACCCAGTGAATGAA
 GCCACTCACAGAGGGCATGAGGAAGAATGGCACCTGGCTGCAGGCTACAGCAGCCACCACACGTGACTGT
 GGCGTGAACCCAGAAGAAGCAGACTCAGCCTTACGCTCCTGGCCACCTGCTCCTTATGACCATGCGC
 TCCACCTCTGGAGTGGGAGGGGAAC

ACGCGTACGCGGCCGCTCGAGCAGAAACTCATCTCAGAAGAGGATCTGGCAGCAAATGATATCCTGGATT
 ACAAGGATGACGACGATAAGGTTTAA

Protein Sequence:

>RC205735 protein sequence
 Red=Cloning site Green=Tags(s)

MMGCFALQTVDELTAADSVWCPLQGCRHLLACGTYQLRRPEDRPAGPQNKGGMEVKEPQVRLGRLFLYS
 FNDNNSIHPLVEVQRKDTSAILDMKWCHIPVAGHALLGLADASGSIQLLRLVESEKSHVLEPLSSLALEE
 QCLALSLDWSTGKTGRAGDQPLKIISSDSTGQLHLLMVNETRPRLQKVASWQAHQFEAWIAAFNYWHPEI
 VYSGDDGLLRGWDTRVPGKFLFTSKRHTMGVCSIQSSPHREHILATGSYDEHILLWDTRNMKQPLADTP
 VQGGVWRKWHPFHHHLLLAACMHSGFKILNCQKAMEERQEATVLTSHLTPDSL VYGADWSWLLFRSLQR
 APSWSFPSNLGKTADLKGASELPTPCHECREDNDGEGHARPQSGMKPLTEGMRKNGTWLQATAATTRDC
 GVNPEEADSAFSLLATCSFYDHALHLWEWEGN

TRTRPLEQKLISEEDLAANDILDYKDDDDKV

Chromatograms:

https://cdn.origene.com/chromatograms/mk6420_g06.zip

Restriction Sites:

Sgfl-Mlul

Cloning Scheme:


ACCN: NM_138778

ORF Size: 1356 bp

OTI Disclaimer: The molecular sequence of this clone aligns with the gene accession number as a point of reference only. However, individual transcript sequences of the same gene can differ through naturally occurring variations (e.g. polymorphisms), each with its own valid existence. This clone is substantially in agreement with the reference, but a complete review of all prevailing variants is recommended prior to use. [More info](#)

OTI Annotation: This clone was engineered to express the complete ORF with an expression tag. Expression varies depending on the nature of the gene.

Components: The ORF clone is ion-exchange column purified and shipped in a 2D barcoded Matrix tube containing 10ug of transfection-ready, dried plasmid DNA (reconstitute with 100 ul of water).

Reconstitution Method:

1. Centrifuge at 5,000xg for 5min.
2. Carefully open the tube and add 100ul of sterile water to dissolve the DNA.
3. Close the tube and incubate for 10 minutes at room temperature.
4. Briefly vortex the tube and then do a quick spin (less than 5000xg) to concentrate the liquid at the bottom.
5. Store the suspended plasmid at -20°C. The DNA is stable for at least one year from date of shipping when stored at -20°C.

RefSeq: [NM_138778.5](#)

RefSeq Size: 1847 bp

RefSeq ORF: 1359 bp

Locus ID: 92715

UniProt ID: [Q9BTV6](#)

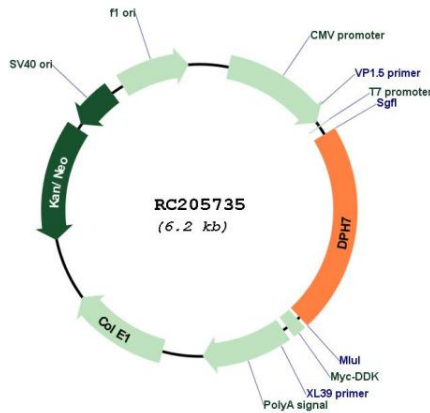
Cytogenetics: 9q34.3

Domains: WD40

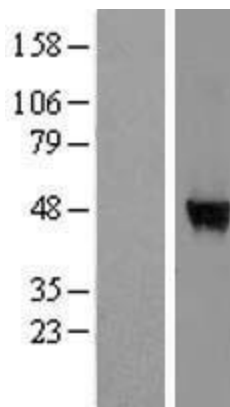
MW: 50.6 kDa

Gene Summary: Diphthamide is a post-translationally modified histidine residue present in elongation factor 2, and is the target of diphtheria toxin. This gene encodes a protein that contains a WD-40 domain, and is thought to be involved in diphthamide biosynthesis. A similar protein in yeast functions as a methyltransferase, converting methylated diphthine to diphthine, which can then undergo amidation to produce diphthamide. [provided by RefSeq, Oct 2016]

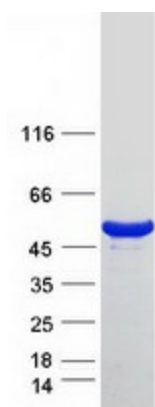
Product images:



Circular map for RC205735



Western blot validation of overexpression lysate (Cat# [LY408517]) using anti-DDK antibody (Cat# [TA50011-100]). Left: Cell lysates from untransfected HEK293T cells; Right: Cell lysates from HEK293T cells transfected with RC205735 using transfection reagent MegaTran 2.0 (Cat# [TT210002]).



Coomassie blue staining of purified DPH7 protein (Cat# [TP305735]). The protein was produced from HEK293T cells transfected with DPH7 cDNA clone (Cat# RC205735) using MegaTran 2.0 (Cat# [TT210002]).