

Product datasheet for **RC205721**

ZNF259 (ZPR1) (NM_003904) Human Tagged ORF Clone

Product data:

Product Type:	Expression Plasmids
Product Name:	ZNF259 (ZPR1) (NM_003904) Human Tagged ORF Clone
Tag:	Myc-DDK
Symbol:	ZPR1
Synonyms:	GKAF; ZNF259
Mammalian Cell Selection:	Neomycin
Vector:	pCMV6-Entry (PS100001)
E. coli Selection:	Kanamycin (25 ug/mL)



[View online »](#)

ORF Nucleotide Sequence:

>RC205721 ORF sequence
 Red=Cloning site Blue=ORF Green=Tags(s)

TTTTGTAATACGACTCACTATAGGGCGGCCGGGAATTCGTCGACTGGATCCGGTACCGAGGAGATCTGCC
 GCC**CGGATCGCC**

ATGGCGGCCACGGGGCTGTGGAACAGGGCCCCGGGGCTGCCGTCGCCCGTCGCCCGCCCCGGCCC
 CGCCGCTGCCCTGATCACTGTTCCGGCCATCAGCGCCGAGGACGAGGAGCAGCAGCCACCGAGAT
 CGAGTCGCTATGCATGAACTGTTACTGCAATGGCATGACGCGCCTCTGCTCACCAAGATTCCTTCTTC
 AGAGAAATAATAGTGAGCTCCTTTCTGCGAGCACTGTGGTGGAAACAACCGGAGATCCAGTCGGCAG
 GCAGGATCCAGGACCAGGGAGTGCCTACACTTTGTCTGTGAGGGCTCTGGAGGACATGAACAGAGAAGT
 GGTGAAGACTGACTCTGCTGCCACAAGGATTCCTGAGCTAGATTTTGAATTCTGCCTTATGCCAGAAA
 GGAGCTCTGACCCTGTTGAAGGATTGATCACCCGTGCTATCTCTGGCCTGGAGCAGGACCAGCCTGCAC
 GAAGGGCAAACAAGATGCTACAGCTGAAAGAATTGATGAGTTTATTGTCAAACCTGAAGGAGCTAAAGCA
 AGTAGCCTCCCTTTCACTCTGATCATTGATGATCCCTCAGGGAACAGTTTTGTGAAAAACCCACATGCT
 CCTCAGAAAGATGATGCCCTGGTATCACACACTACAACCGACCCGACAGCAGGAAGAGATGCTGGGGC
 TTCAAGAGAAGCACCAGCAGAGAAGCCAGAAGAGGAAGATCTCAGAAATGAAGTGTCCAGTTCAGCAC
 AAAGTCCAGAAATGCAATGCCCCGCTCAGACCAACATGAAGCTAGTACAAATCCCTCACTTTAAGGAG
 GTTATCATCATGGCTACCAACTGCGAGAAGTGTGGGATCGGACCAATGAGGTGAAATCTGGAGGAGCAG
 TAGAACCTTTGGGCACCAGGATCACCTCCACATCACAGATGCCTCAGATATGACCAGAGACCTCCTCAA
 GTCTGAGACTTGCAAGTGTGAAAATCCAGAGCTAGAATTTGAAGTGGGATGGCAGTCTCGGGGCAAG
 TTCACCACACTGGAAGGGCTGCTGAAAGACATCCGGGAAGTGGTACCAAAAATCCTTTCACTGGGGC
 ACAGTTCCAATCCTGGACAGACGAGAGACTACAGGAGTTTAGCCAGAAGATGGACCAGATCATCGAAGG
 TAACATGAAGGCCCACTTTATTATGGATGATCCAGCAGGAACAGTTACTTGCAGAATGTGTATGCGCCT
 GAAGATGATCCTGAGATGAAGGTGGAGCGTTACAAGCGCACCTTTGACCAAAAATGAGGAGCTAGGGCTCA
 ATGACATGAAGACAGAGGGCTATGAGGCAGGCCTGGCTCCGCAACGG

ACGCGTACGCGGCCGCTCGAGCAGAACTCATCTCAGAAGAGGATCTGGCAGCAAATGATATCCTGGATT
 ACAAGGATGACGACGATAAGGTTTAA

Protein Sequence:

>RC205721 protein sequence
 Red=Cloning site Green=Tags(s)

MAASGAVEPGPPGAAVAPSPAPAPPAPDHLFRPISAEDEEQPTEIESLCMNCYCNGMTRLLLTKIPFF
 REIIVSSFSCHECGWNTEIQSAGRIQDQGVRYTLVRALEDMNREVVKTDASAATRIPELDFEIPAFSQK
 GALLTVEGLITRAISGLEQDQPARRANKDATAERIDEFIVKLEKELKQVASPFTLIIDDPGNSFVENPHA
 PQKDDALVITHYNRTRQQEEMGLQEEAPAEPKPEEEDLRNEVLQFSTNCPENAPAQTNMMLVQIPHFKE
 VIIMATNCENCGHRTNEVKS GGAVEPLGTRITLHITDASDMTRDLLKSETCSVEIPELEFELGMAVLGGK
 FTTLEGLLKDIRELVTKNPFTLGDSSNPQTERLQEF SQKMDQIIEGNMKAHFIMDDPAGNSYLQNYVAP
 EDDPEMKVERYKRTFDQNEELGLNDMKTGEGYAGLAPQR

TRTRPLEQKLISEEDLAANDILDYKDDDDKV

Chromatograms:

https://cdn.origene.com/chromatograms/mk6574_d06.zip

Restriction Sites:

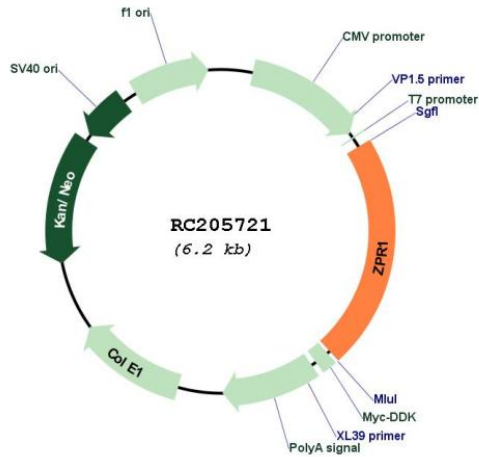
Sgfl-Mlul

Cloning Scheme:

Cloning sites used for ORF Shuttling:



* The last codon before the Stop codon of the ORF

Plasmid Map:


ACCN: NM_003904

ORF Size: 1377 bp

OTI Disclaimer: The molecular sequence of this clone aligns with the gene accession number as a point of reference only. However, individual transcript sequences of the same gene can differ through naturally occurring variations (e.g. polymorphisms), each with its own valid existence. This clone is substantially in agreement with the reference, but a complete review of all prevailing variants is recommended prior to use. [More info](#)

OTI Annotation: This clone was engineered to express the complete ORF with an expression tag. Expression varies depending on the nature of the gene.

Components: The ORF clone is ion-exchange column purified and shipped in a 2D barcoded Matrix tube containing 10ug of transfection-ready, dried plasmid DNA (reconstitute with 100 ul of water).

Reconstitution Method:

1. Centrifuge at 5,000xg for 5min.
2. Carefully open the tube and add 100ul of sterile water to dissolve the DNA.
3. Close the tube and incubate for 10 minutes at room temperature.
4. Briefly vortex the tube and then do a quick spin (less than 5000xg) to concentrate the liquid at the bottom.
5. Store the suspended plasmid at -20°C. The DNA is stable for at least one year from date of shipping when stored at -20°C.

RefSeq: [NM_003904.5](#)

RefSeq Size: 1810 bp

RefSeq ORF: 1380 bp

Locus ID: 8882

UniProt ID: [O75312](#)

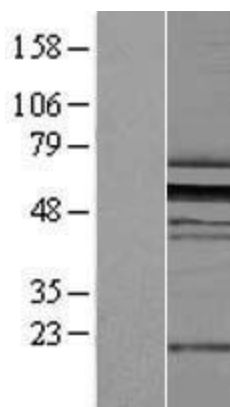
Cytogenetics: 11q23.3

Domains: Zpr1

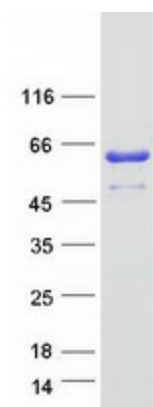
MW: 50.9 kDa

Gene Summary: The protein encoded by this gene is found in the cytoplasm of quiescent cells but translocates to the nucleolus in proliferating cells. The encoded protein interacts with survival motor neuron protein (SMN1) to enhance pre-mRNA splicing and to induce neuronal differentiation and axonal growth. Defects in this gene or the SMN1 gene can cause spinal muscular atrophy. Two transcript variants encoding different isoforms have been found for this gene. [provided by RefSeq, Nov 2015]

Product images:



Western blot validation of overexpression lysate (Cat# [LY418360]) using anti-DDK antibody (Cat# [TA50011-100]). Left: Cell lysates from untransfected HEK293T cells; Right: Cell lysates from HEK293T cells transfected with RC205721 using transfection reagent MegaTran 2.0 (Cat# [TT210002]).



Coomassie blue staining of purified ZPR1 protein (Cat# [TP305721]). The protein was produced from HEK293T cells transfected with ZPR1 cDNA clone (Cat# RC205721) using MegaTran 2.0 (Cat# [TT210002]).