

Product datasheet for RC205712

Prune homolog 2 (PRUNE2) (NM_138818) Human Tagged ORF Clone

Product data:

Product Type:	Expression Plasmids
Product Name:	Prune homolog 2 (PRUNE2) (NM_138818) Human Tagged ORF Clone
Tag:	Myc-DDK
Symbol:	Prune homolog 2
Synonyms:	BMCC1, BNIPXL, C9orf65, KIAA0367, A214N16.3, bA214N16.3
Mammalian Cell Selection:	Neomycin
Vector:	pCMV6-Entry (PS100001)
E. coli Selection:	Kanamycin (25 ug/mL)
ORF Nucleotide Sequence:	>RC205712 representing NM_138818 Red=Cloning site Blue=ORF Green=Tags(s)

TTTTGTAATACGACTCACTATAGGGCGCCGGGAATTCGTCGACTGGATCCGGTACCGAGGAGATCTGCC
GCC**CGGATCGCC**

ATGGAAGAATTTTTGCAACGCGCCAAATCTAAACTGAATCGAAGCAAACGCTTGGAGAAGGTCCATGTGG
TTATTGGGCTAAATCGTGTGACTTGGATTCTCTCATTCTACCTTCACATATGCTTACTTTCTAGACAA
GGTCAGTCCACCAGGGTTCTGTGTTTACCAGTGCTGAACATACCAAGAAGTGAATTCAACTACTTCACC
GAGACGAGGTTTATTTTGAAGAGCTAAATATTTCCGAATCATTCCACATATTCCGGGATGAAATTAACC
TGCATCAGCTAAATGATGAAGGGAAGTTATCGATAACACTTGTTGGCAGCAGTGTGCTGGCGAGTGAAGA
CAAACTTTAGAATCAGCAGTTGTCAAAGTCATTAATCCGGTTGAGCAGAGCGATGCCAACGTTGAGTTC
CGAGAGTCTTCTCTCTCTCGTCTAAAGGAGATTCTCCAAGAGGCTCCTGAGCTCATCCGAGCAAC
TGGCTCATCGCCTCAGAGGTAGCATTCTTTTCAAGTGGATGACCATGGAATCAGAGAAGATCTCAGAGAA
GCAGGAGGAAATCTTTCTATCCTGGAAGAAAAATTTCTAACTTGCCCTCAAGAGAGGACATCATCAAC
GTCCTACAGGAGACCCAGTTCAGTGCTCAGGGTTAAGTATTGAACAGACAATGTTGAAAGATCTAAAGG
AGCTGTCAGATGGAGAAAATAAAGTGGCCATTAGTACTGTGAGCATGAACCTTGAGGTAAGGGTGGGAAT
GCTTTTT

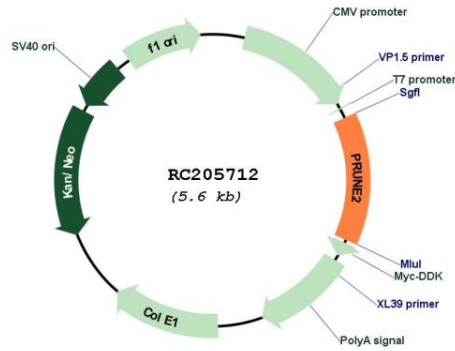
ACGCGTACGCGGCCGCTCGAGCAGAAACTCATCTCAGAAGAGGATCTGGCAGCAAATGATATCCTGGATT
ACAAGGATGACGACGATAAGGTTTAA



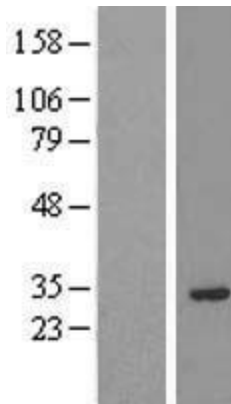
[View online »](#)

Reconstitution Method:	<ol style="list-style-type: none">1. Centrifuge at 5,000xg for 5min.2. Carefully open the tube and add 100ul of sterile water to dissolve the DNA.3. Close the tube and incubate for 10 minutes at room temperature.4. Briefly vortex the tube and then do a quick spin (less than 5000xg) to concentrate the liquid at the bottom.5. Store the suspended plasmid at -20°C. The DNA is stable for at least one year from date of shipping when stored at -20°C.
Note:	Plasmids are not sterile. For experiments where strict sterility is required, filtration with 0.22um filter is required.
RefSeq:	<u>NM_138818.2</u> , <u>NP_620173.1</u>
RefSeq Size:	1264 bp
RefSeq ORF:	779 bp
Locus ID:	158471
Cytogenetics:	9q21.2
MW:	29.3 kDa
Gene Summary:	<p>The protein encoded by this gene belongs to the B-cell CLL/lymphoma 2 and adenovirus E1B 19 kDa interacting family, whose members play roles in many cellular processes including apoptosis, cell transformation, and synaptic function. Several functions for this protein have been demonstrated including suppression of Ras homolog family member A activity, which results in reduced stress fiber formation and suppression of oncogenic cellular transformation. A high molecular weight isoform of this protein has also been shown to colocalize with Adaptor protein complex 2, beta-Adaptin and endodermal markers, suggesting an involvement in post-endocytic trafficking. In prostate cancer cells, this gene acts as a tumor suppressor and its expression is regulated by prostate cancer antigen 3, a non-protein coding gene on the opposite DNA strand in an intron of this gene. Prostate cancer antigen 3 regulates levels of this gene through formation of a double-stranded RNA that undergoes adenosine deaminase actin on RNA-dependent adenosine-to-inosine RNA editing. Alternative splicing results in multiple transcript variants. [provided by RefSeq, Jul 2015]</p>

Product images:



Circular map for RC205712



Western blot validation of overexpression lysate (Cat# [LY408463]) using anti-DDK antibody (Cat# [TA50011-100]). Left: Cell lysates from untransfected HEK293T cells; Right: Cell lysates from HEK293T cells transfected with RC205712 using transfection reagent MegaTran 2.0 (Cat# [TT210002]).