

Product datasheet for RC205704

LMAN2 (NM_006816) Human Tagged ORF Clone

Product data:

Product Type:	Expression Plasmids
Product Name:	LMAN2 (NM_006816) Human Tagged ORF Clone
Tag:	Myc-DDK
Symbol:	LMAN2
Synonyms:	C5orf8; GP36B; VIP36
Mammalian Cell Selection:	Neomycin
Vector:	pCMV6-Entry (PS100001)
E. coli Selection:	Kanamycin (25 ug/mL)
ORF Nucleotide Sequence:	>RC205704 ORF sequence Red=Cloning site Blue=ORF Green=Tags(s)

TTTTGTAATACGACTCACTATAGGGCGGCCGGAATTCGTCGACTGGATCCGGTACCGAGGAGATCTGCC
GCC**CGATCGCC**

ATGGCGCGGAAGGCTGGATTTGGCGTTGGGGCTGGGGCCGGCGGTGCCTGGGAAGGCTGGGCTTCTCG
GCCCGGCCCTGGCCCACTACACCTCTCTTTCTTTTGTGTTGGGGCTGTGACTGCGGATATAAC
TGACGGCAACAGTGAACATCTCAAGCGGGAGCATTGCTCATTAAAGCCCTACCAAGGGTTCGTTCCAGC
TCTATGCCCTCTGGGACTTCCAGGGCAGCACTATGCTCAGGACAGTACGTACGTCTGACCCCTGACG
AGCGCAGCAAAGAGGGCTCTATCTGGAACCACCAGCCGTCTTCTCAAAGACTGGGAAATGCACGTCCA
CTTCAAAGTCCACGGCACAGGGAAGAAGAACCTCCATGGAGACGGCATCGCCTTGTGGTACACCCGGGAC
CGCCTCGTGCCAGGGCCTGTGTTTGAAGCAAAGATAACTTCCACGGCTTAGCCATCTTCTGGACACCT
ACCCCAATGATGAGACCACTGAGCGCGTGTCCCGTACATCTCGGTGATGGTGAACAATGGCTCCCTGTC
CTACGACCACAGCAAGGATGGGCGCTGGACCGAGCTGGCGGGCTGCACGGCTGACTTCCGCAACCCGGAT
CACGACACCTTCTGGCTGTGCGCTACTCCCGGGCCGTCTGACGGTGTGACCGACCTGGAGGACAAGA
ACGAGTGAAGAAGTGCATTGACATCACGGGAGTGCAGCTGCCACCCGGCTACTACTTCCGGGCTCCGC
CGGCACCGGGACCTGTCTGACAATCATGACATCATCTCCATGAAGCTGTTCCAGCTGATGGTGGAGCAC
ACGCCCGACGAGGAGAGCATCGACTGGACCAAGATCGAGCCAGCGTCAACTTCTCAAGTCGCCCAAAG
ACAACGTGGACGACCCACGGGGAACTTCCGACGCGGCCCTGACGGGTGGCGGGTGTCTGCTGCTGCT
GCTGTGCGCTCTCTGGGCATCGTTGTCTGCGCCGTGGTGGGGCCGTGGTGTCCAGAAGCGGCAGGAG
CGGAACAAGCGCTTCTAC

ACGCGTACGCGGCCGCTCGAGCAGAACTCATCTCAGAAGAGGATCTGGCAGCAAATGATATCCTGGATT
ACAAGGATGACGACGATAAGGTTTAA



[View online »](#)

Protein Sequence: >RC205704 protein sequence
Red=Cloning site Green=Tags(s)

MAAEGWIWRWGWRRCLGRPGLLGPGPGPTTPLFLLLLLGSVTADITDGNSEHLKREHSLIKPYQGVGSS
 SMPLWDFQGSTMLTSQYVRLTPDERSKEGSIWNHQPCFLKDWEMHVHFVHGTGKKNLHGDGIALWYTRD
 RLVPGPVFGSKDNFHLAIFLDTPNDEETTERVFPYISVMVNGSLSYDHSKDGRTWELAGCTADFRNRD
 HDTFLAVRYSRGRLLVMTDLEDKNEWKNCIDITGVRLPTGYFFGASAGTGDLSDNHDIIISMKLFQLMVEH
 TPDEESIDWTKIEPSVNFLLKSPKDNVDDPTGNFRSGPLTGWRFLLLLCALLGIVVCAVVGAVVFQKRQE
 RNKRFY

TRTRPLEQKLISEEDLAANDILDYKDDDDKV

Chromatograms: https://cdn.origene.com/chromatograms/mk6176_b08.zip

Restriction Sites: SgfI-MluI

Cloning Scheme:



ACCN: NM_006816

ORF Size: 1068 bp

OTI Disclaimer: The molecular sequence of this clone aligns with the gene accession number as a point of reference only. However, individual transcript sequences of the same gene can differ through naturally occurring variations (e.g. polymorphisms), each with its own valid existence. This clone is substantially in agreement with the reference, but a complete review of all prevailing variants is recommended prior to use. [More info](#)

OTI Annotation: This clone was engineered to express the complete ORF with an expression tag. Expression varies depending on the nature of the gene.

Components: The ORF clone is ion-exchange column purified and shipped in a 2D barcoded Matrix tube containing 10ug of transfection-ready, dried plasmid DNA (reconstitute with 100 ul of water).

Reconstitution Method:

1. Centrifuge at 5,000xg for 5min.
2. Carefully open the tube and add 100ul of sterile water to dissolve the DNA.
3. Close the tube and incubate for 10 minutes at room temperature.
4. Briefly vortex the tube and then do a quick spin (less than 5000xg) to concentrate the liquid at the bottom.
5. Store the suspended plasmid at -20°C. The DNA is stable for at least one year from date of shipping when stored at -20°C.

RefSeq: [NM_006816.3](#)

RefSeq Size: 1853 bp

RefSeq ORF: 1071 bp

Locus ID: 10960

UniProt ID: [Q12907](#)

Cytogenetics: 5q35.3

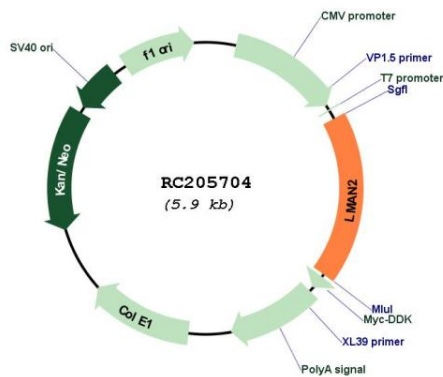
Domains: Lectin_leg-like

Protein Families: Transmembrane

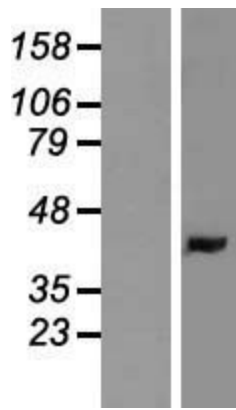
MW: 40.2 kDa

Gene Summary: This gene encodes a type I transmembrane lectin that shuttles between the endoplasmic reticulum, the Golgi apparatus and the plasma membrane. The encoded protein binds high mannose type glycoproteins and may facilitate their sorting, trafficking and quality control. [provided by RefSeq, Oct 2008]

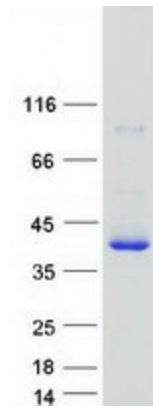
Product images:



Circular map for RC205704



Western blot validation of overexpression lysate (Cat# [LY416403]) using anti-DDK antibody (Cat# [TA50011-100]). Left: Cell lysates from untransfected HEK293T cells; Right: Cell lysates from HEK293T cells transfected with RC205704 using transfection reagent MegaTran 2.0 (Cat# [TT210002]).



Coomassie blue staining of purified LMAN2 protein (Cat# [TP305704]). The protein was produced from HEK293T cells transfected with LMAN2 cDNA clone (Cat# RC205704) using MegaTran 2.0 (Cat# [TT210002]).