

Product datasheet for RC205700

C9orf23 (RPP25L) (NM_148178) Human Tagged ORF Clone

Product data:

Product Type: Expression Plasmids
Product Name: C9orf23 (RPP25L) (NM_148178) Human Tagged ORF Clone
Tag: Myc-DDK
Symbol: C9orf23
Synonyms: bA296L22.5; C9orf23
Mammalian Cell Selection: Neomycin
Vector: pCMV6-Entry (PS100001)
E. coli Selection: Kanamycin (25 ug/mL)
ORF Nucleotide Sequence: >RC205700 ORF sequence
Red=Cloning site Blue=ORF Green=Tags(s)

TTTTGTAATACGACTCACTATAGGGCGGCCGGAATTCGTCGACTGGATCCGGTACCGAGGAGATCTGCC
GCC**CGATCGCC**

ATGGAGCACTACCGAAAGCTGGCTCTGTAGAGCTCCCAGCGCCTTCCCCAATGCCCCAGCTACCTCCTG
ATACCTTGAGATGCGGGTCCGAGATGGCAGCAAAATTCGCAACCTGCTGGGGTTGGCTCTGGGTCGGTT
GGAGGGCGGCAGTCTCGGCATGTAGTGTCTCAGGTTCTGGCAGGGCTGCAGGAAAGGCTGTCAGCTGC
GCTGAGATTGTCAAGCGCGGGTCCAGGCCTGCACCAGCTCACCAAGCTACGTTTCCTTCAGACTGAGG
ACAGCTGGTCCCAGCCTCACCTGACACAGGGCTAGACCCCTCACAGTGCGCCCATGTGCCTGCAGT
GTGGGTGCTGCTCAGCCGGGACCCCTGGACCCCAATGAGTGTGGTTACCAACCCCGAGGAGACCCCT
GGCCTGGGTTCCATGCCAGCTCCAGCTGTGGCCCTCGTTCCCGAAGAAGGGCTCGAGACACCCGATCG

ACGCGTACGCGGCCGCTCGAGCAGAACTCATCTCAGAAGAGGATCTGGCAGCAAATGATATCCTGGATT
ACAAGGATGACGACGATAAGGTTTAA

Protein Sequence: >RC205700 protein sequence
Red=Cloning site Green=Tags(s)

MEHYRKAGSVLPPSPMPQLPPDTLEMRVRDGSKIRNLLGLALGRLEGG SARHVVFSGSGRAAGKAVSC
AEIVKRRVPLHQLTKLRFQTEDSWVPASPDTGLDPLTVRRHVPVWVLLSRDPLDPNCEGYQPPGAPP
GLGMPSSSCGPRRARRDRS

TRTRPLEQKLI SEEDLAANDILDYKDDDDKV

Chromatograms: https://cdn.origene.com/chromatograms/mk6427_g12.zip



[View online »](#)

Locus ID: 138716

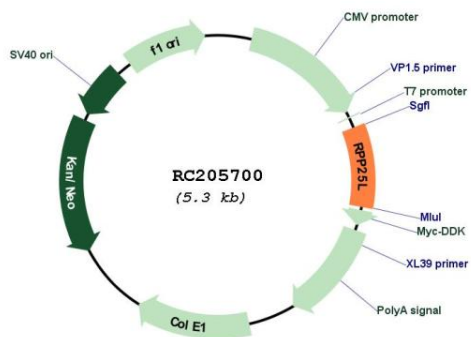
UniProt ID: [Q8N5L8](#)

Cytogenetics: 9p13.3

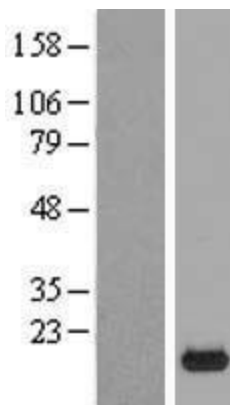
MW: 17.6 kDa

Gene Summary: This gene encodes a protein that appears to belong to a family of evolutionarily related proteins (DUF78), that may share one or more domains in common. Members of this family are small archaeobacterial proteins with no known function. Alternative splicing has been observed at this locus and two variants, both encoding the same protein, have been identified. [provided by RefSeq, Jul 2008]

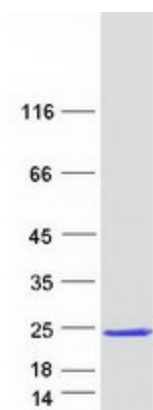
Product images:



Circular map for RC205700



Western blot validation of overexpression lysate (Cat# [LY407739]) using anti-DDK antibody (Cat# [TA50011-100]). Left: Cell lysates from untransfected HEK293T cells; Right: Cell lysates from HEK293T cells transfected with [RC223396] using transfection reagent MegaTran 2.0 (Cat# [TT210002]).



Coomassie blue staining of purified RPP25L protein (Cat# [TP305700]). The protein was produced from HEK293T cells transfected with RPP25L cDNA clone (Cat# RC205700) using MegaTran 2.0 (Cat# [TT210002]).