

## Product datasheet for RC205699

### Epithelial Stromal Interaction 1 (EPSTI1) (NM\_001002264) Human Tagged ORF Clone

#### Product data:

Product Type:	Expression Plasmids
Product Name:	Epithelial Stromal Interaction 1 (EPSTI1) (NM_001002264) Human Tagged ORF Clone
Tag:	Myc-DDK
Symbol:	Epithelial Stromal Interaction 1
Synonyms:	BRESI1
Mammalian Cell Selection:	Neomycin
Vector:	pCMV6-Entry (PS100001)
E. coli Selection:	Kanamycin (25 ug/mL)
ORF Nucleotide Sequence:	>RC205699 ORF sequence Red=Cloning site Blue=ORF Green=Tags(s)

TTTTGTAATACGACTCACTATAGGGCGGCCGGAATTCGTCGACTGGATCCGGTACCGAGGAGATCTGCC  
GCC**CGATCGCC**

ATGAACACCCGCAATAGAGTGGTGAACCTCGGGCTCGGCGCTCCCCTGCCTCCCGCCGACCCGGGATC  
CCCAGGACCCCTTCTGGGCGGCAAGGGGAGCTGAGCCCCGTGGAAGACCAGAGAGAGGGTTTGAGGCGAGC  
CCCTAAGGGCCCTTCGCGGGAGAGCGTCGTGCACGCGGCCAGAGGCGCACAAGTGCATACACCTTGATA  
GCACCAAAATAAAACCGAGAAATGAGATACAAAGAATTGCGGAGCAGGAGCTGGCCAACCTGGAGAAGT  
GGAAGGAGCAGAACAGAGCTAAACCGGTTACCTGGTGCCAGACGGCTAGGTGGAAGCCAGTCAGAAAC  
TGAAGTCAGACAGAAACAACAATCCAGCTGATGCAATCTAAATACAAGCAAAAGCTAAAAAGAGAAGAA  
TCTGTAAGAATCAAGAAGGAAGCTGAAGAAGCTGAACTCCAAAAAATGAAGGCAATTCAGAGAGAGAAGA  
GCAATAAACTGGAGGAGAAAAAAGACTTCAAGAAAACCTTAGAAGAGAAGCATTAGAGAGCATCAGCA  
ATACAAAACCGCTGAGTTCTTGAGCAAACCTGAACACAGAAATCGCCAGACAGAAAGTGCCTGTCAAAGTGCT  
GTTTGTGGCCACAATCCTCAACATGGAACCTCCTATCCTGCCTAGGGATCACAGCTGGCCAGAAAGCT  
GGGCTTACAGAGATTCTCTAAAGGCAGAAAGAAAACAGAAAATTGCAAAAGATGAAGGATGAACAACATCA  
AAAGAGTGAATTACTGAACTGAAACGGCAGCAGCAAGAGCAAGAAAGAGCCAAAATCCACCAGACTGAA  
CACAGGAGGGTAAATAATGCTTTTCTGGACCGACTCCAAGGCAAAAGTCAACCAGGTGGCCTCGAGCAAT  
CTGGAGGCTGTTGGAATATGAATAGCGGTAACAGCTGGGTTCTCTATTAGTTTTTCGAGGCACCTAAG  
GGTATATGAGAAAATATTGACTCCTATCTGGCCTTCATCAACTGACCTCGAAAAGCCTCATGAGATGCTT  
TTTCTTAATGTGATTTTGTTCAGCCTCACTGTTTTACCTTAATTTCAACTGCCACACACTTGACCGTG  
CAGTCAGGAGTGACTGGCTTCTCCTTGCTCATTATGCATGTTTGGAGGAGCTGATTCCTGAACATCAT  
ATTTAATCTCTACTGCCAGGAAATGCTACATTATTTTC

**ACGCGT**ACGCGGCCGCTCGAGCAGAAACTCATCTCAGAAGAGGATCTGGCAGCAAATGATATCCTGGATT  
ACAAGGATGACGACGATAAGGTTTAA



[View online »](#)

**Protein Sequence:** >RC205699 protein sequence  
Red=Cloning site Green=Tags(s)

MNTRNRVNSGLGASPARPTRDPQDPSGRQGE LSPVEDQREGLEAAPKGPSRESVVHAGQRRTSAYTLI  
 APNINRRNEIQRIAEQELANLEKWKQNRAPVHLVPRRLGGSQSETEVRQKQLQLMQSKYKQKLKREE  
 SVRIKKEAEEAELQKMKAIQREKSNKLEEKRLQENLRREAFREHQYKTAEFLSKLNTESPDRSACQSA  
 VCGPQSSTWKLPI LPRDHSWARSWAYRDSLKAENRKLQKMKDEQHQKSELLELKRQQEQERAKIHQTE  
 HRRVNN AFLDRLQ GK SQPGGLEQSGGCWNMNSGNSWGSLLVFSRHLRVYEKILTP IWPSSTDLEKPH EML  
 FLNVILFSLTVFTLISTAHTLDRAVRSDWLLLVL IYACLEELIPELIFNLYCQGNATLFF

TRTRPLEQKLISEEDLAANDILDYKDDDDKV

**Chromatograms:** [https://cdn.origene.com/chromatograms/mk6564\\_f12.zip](https://cdn.origene.com/chromatograms/mk6564_f12.zip)

**Restriction Sites:** SgfI-MluI

**Cloning Scheme:**



**ACCN:** NM\_001002264

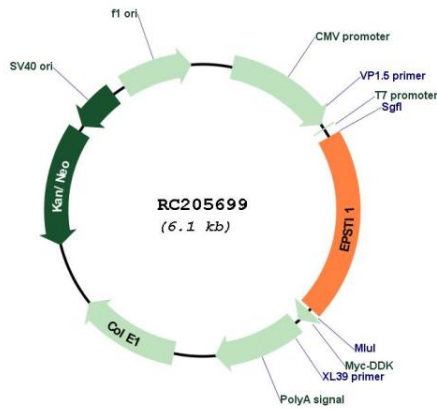
**ORF Size:** 1230 bp

**OTI Disclaimer:** Due to the inherent nature of this plasmid, standard methods to replicate additional amounts of DNA in E. coli are highly likely to result in mutations and/or rearrangements. Therefore, OriGene does not guarantee the capability to replicate this plasmid DNA. Additional amounts of DNA can be purchased from OriGene with batch-specific, full-sequence verification at a reduced cost. Please contact our customer care team at [custsupport@origene.com](mailto:custsupport@origene.com) or by calling 301.340.3188 option 3 for pricing and delivery.

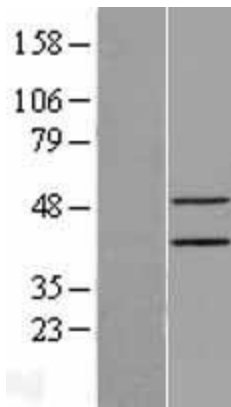
The molecular sequence of this clone aligns with the gene accession number as a point of reference only. However, individual transcript sequences of the same gene can differ through naturally occurring variations (e.g. polymorphisms), each with its own valid existence. This clone is substantially in agreement with the reference, but a complete review of all prevailing variants is recommended prior to use. [More info](#)

<b>OTI Annotation:</b>	This clone was engineered to express the complete ORF with an expression tag. Expression varies depending on the nature of the gene.
<b>Components:</b>	The ORF clone is ion-exchange column purified and shipped in a 2D barcoded Matrix tube containing 10ug of transfection-ready, dried plasmid DNA (reconstitute with 100 ul of water).
<b>Reconstitution Method:</b>	<ol style="list-style-type: none"><li>1. Centrifuge at 5,000xg for 5min.</li><li>2. Carefully open the tube and add 100ul of sterile water to dissolve the DNA.</li><li>3. Close the tube and incubate for 10 minutes at room temperature.</li><li>4. Briefly vortex the tube and then do a quick spin (less than 5000xg) to concentrate the liquid at the bottom.</li><li>5. Store the suspended plasmid at -20°C. The DNA is stable for at least one year from date of shipping when stored at -20°C.</li></ol>
<b>Note:</b>	Plasmids are not sterile. For experiments where strict sterility is required, filtration with 0.22um filter is required.
<b>RefSeq:</b>	<a href="#">NM_001002264.4</a>
<b>RefSeq Size:</b>	3201 bp
<b>RefSeq ORF:</b>	1233 bp
<b>Locus ID:</b>	94240
<b>UniProt ID:</b>	<a href="#">Q96J88</a>
<b>Cytogenetics:</b>	13q14.11
<b>Protein Families:</b>	Transmembrane
<b>MW:</b>	47.5 kDa
<b>Gene Summary:</b>	The protein encoded by this gene has been shown to promote tumor invasion and metastasis in some invasive cancer cells when overexpressed. Expression of this gene has been shown to be upregulated by direct binding of the Kruppel like factor 8 protein to promoter sequences. The translated protein interacts with the amino terminal region of the valosin containing protein gene product, resulting in the nuclear translocation of the nuclear factor kappa B subunit 1 gene product, and activation of target genes. Overexpression of this gene has been observed in some breast cancers and in some individuals with systemic lupus erythematosus (SLE). [provided by RefSeq, Sep 2016]

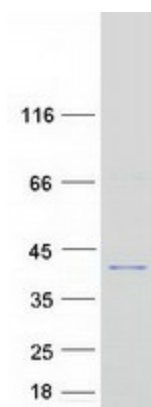
Product images:



Circular map for RC205699



Western blot validation of overexpression lysate (Cat# [LY424196]) using anti-DDK antibody (Cat# [TA50011-100]). Left: Cell lysates from untransfected HEK293T cells; Right: Cell lysates from HEK293T cells transfected with RC205699 using transfection reagent MegaTran 2.0 (Cat# [TT210002]).



Coomassie blue staining of purified EPSTI1 protein (Cat# [TP305699]). The protein was produced from HEK293T cells transfected with EPSTI1 cDNA clone (Cat# RC205699) using MegaTran 2.0 (Cat# [TT210002]).