

Product datasheet for RC205695

Asialoglycoprotein Receptor 2 (ASGR2) (NM_080913) Human Tagged ORF Clone

Product data:

Product Type:	Expression Plasmids
Product Name:	Asialoglycoprotein Receptor 2 (ASGR2) (NM_080913) Human Tagged ORF Clone
Tag:	Myc-DDK
Symbol:	Asialoglycoprotein Receptor 2
Synonyms:	ASGP-R2; ASGPR2; CLEC4H2; HBXBP; HL-2
Mammalian Cell Selection:	Neomycin
Vector:	pCMV6-Entry (PS100001)
E. coli Selection:	Kanamycin (25 ug/mL)
ORF Nucleotide Sequence:	>RC205695 ORF sequence Red=Cloning site Blue=ORF Green=Tags(s)

TTTTGTAATACGACTCACTATAGGGCGGCCGGAATTCGTCGACTGGATCCGGTACCGAGGAGATCTGCC
GCC**CGATCGCC**

ATGGCCAAGGACTTTCAAGATATCCAGCAGCTGAGCTCGGAGGAAAATGACCATCCTTTCCATCAAGGGC
CACCTCTGCCAGCCCTGGCACAGCTCTGCTCCATGGTCTGCTTCAGTCTGCTTGGCCTGAGCTT
CAACATCCTGCTGCTGGTGGTCACTGTGTGACTGGGTCCCAAAGTGACAGCTGCAAGCCGAGCTGCGG
AGCCTGAAGGAAGCTTTAGCAACTTCTCTCGAGCACCTGACGGAGGTCCAGGCAATCAGCACCCACG
GAGGCAGCGTGGGTGACAAGATCACATCCCTAGGAGCCAAGCTGGAGAAACAGCAGCAGGACCTGAAAGC
AGATCACGATGCCCTGCTTCCATCTGAAGCACTTCCCGTGGACCTGCGCTTCGTGGCCTGCCAGATG
GAGCTCCTCCACAGCAACGGCTCCCAAAGGACCTGCTGCCCGTCAACTGGGTGGAGCACCAGGACGCT
GCTACTGGTTCTCTCACTCCGGGAAGGCCTGGGCTGAGGCGGAGAAGTACTGCCAGCTGGAGAACGCACA
CCTGGTGGTCACTCAACTCCTGGGAGGAGCAGAAATTCATTGTACAACACACGAACCCCTTCAATACCTGG
ATAGGTCTACGGACAGTGATGGCTCTTGGAAATGGGTGGATGGCACAGACTATAGGCACAACTACAAGA
ACTGGGCTGTCACTCAGCCAGATAATTGGCACGGGCACGAGCTGGGTGGAAGTGAAGACTGTGTTGAAGT
CCAGCCGGATGGCCGCTGGAACGATGACTTCTGCCTGCAGGTGTACCGCTGGGTGTGAGAAAAGCGG
AATGCCACCGGCGAGGTGGCC

ACGCGTACGCGGCCGCTCGAGCAGAAACTCATCTCAGAAGAGGATCTGGCAGCAAATGATATCCTGGATT
ACAAGGATGACGACGATAAGGTTTAA



[View online »](#)

Protein Sequence: >RC205695 protein sequence
Red=Cloning site Green=Tags(s)

MAKDFQDIQQLSSEENDHPFHQGPPLAQPLAQRLCMVCFSLALSFNILLVVICVTGSQSAQLQAE LR
 SLKEAFSNFSSSTL TEVQAISTHGGSVGDKITSLGAKLEKQQDLKADHDALLFHLKHFPVDLRFVACQM
 ELLHSNGSQRTCCPVNWEHQGSCYWF SHSGKAWAEAEKYCQLENAHLVVINSWEEQKFIVQHTNPFNTW
 IGLTSDSGSWKWVDGTDYRHNYKNWAVTQPDNWHGHELGGSEDCVEVQPDGRWNDDFCLQVYRWVCEKRR
 NATGEVA

TRTRPLEQKLISEEDLAANDILDYKDDDDKV

Chromatograms: https://cdn.origene.com/chromatograms/mk6420_a10.zip

Restriction Sites: SgfI-MluI

Cloning Scheme:



ACCN: NM_080913

ORF Size: 861 bp

OTI Disclaimer: The molecular sequence of this clone aligns with the gene accession number as a point of reference only. However, individual transcript sequences of the same gene can differ through naturally occurring variations (e.g. polymorphisms), each with its own valid existence. This clone is substantially in agreement with the reference, but a complete review of all prevailing variants is recommended prior to use. [More info](#)

OTI Annotation: This clone was engineered to express the complete ORF with an expression tag. Expression varies depending on the nature of the gene.

Components: The ORF clone is ion-exchange column purified and shipped in a 2D barcoded Matrix tube containing 10ug of transfection-ready, dried plasmid DNA (reconstitute with 100 ul of water).

Reconstitution Method:

1. Centrifuge at 5,000xg for 5min.
2. Carefully open the tube and add 100ul of sterile water to dissolve the DNA.
3. Close the tube and incubate for 10 minutes at room temperature.
4. Briefly vortex the tube and then do a quick spin (less than 5000xg) to concentrate the liquid at the bottom.
5. Store the suspended plasmid at -20°C. The DNA is stable for at least one year from date of shipping when stored at -20°C.

Note: Plasmids are not sterile. For experiments where strict sterility is required, filtration with 0.22um filter is required.

RefSeq: [NM_080913.3](#)

RefSeq Size: 1384 bp

RefSeq ORF: 864 bp

Locus ID: 433

UniProt ID: [P07307](#)

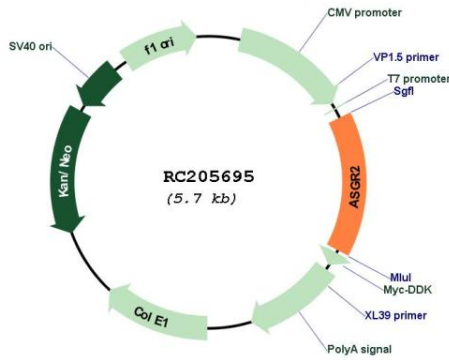
Cytogenetics: 17p13.1

Protein Families: Druggable Genome, Transmembrane

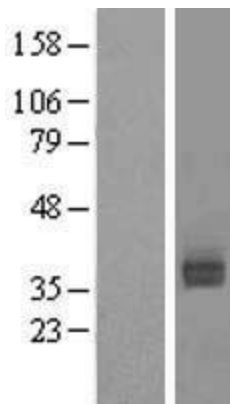
MW: 32.6 kDa

Gene Summary: This gene encodes a subunit of the asialoglycoprotein receptor. This receptor is a transmembrane protein that plays a critical role in serum glycoprotein homeostasis by mediating the endocytosis and lysosomal degradation of glycoproteins with exposed terminal galactose or N-acetylgalactosamine residues. The asialoglycoprotein receptor may facilitate hepatic infection by multiple viruses including hepatitis B, and is also a target for liver-specific drug delivery. The asialoglycoprotein receptor is a hetero-oligomeric protein composed of major and minor subunits, which are encoded by different genes. The protein encoded by this gene is the less abundant minor subunit. Alternatively spliced transcript variants encoding multiple isoforms have been observed for this gene. [provided by RefSeq, Jan 2011]

Product images:



Circular map for RC205695



Western blot validation of overexpression lysate (Cat# [LY409000]) using anti-DDK antibody (Cat# [TA50011-100]). Left: Cell lysates from untransfected HEK293T cells; Right: Cell lysates from HEK293T cells transfected with RC205695 using transfection reagent MegaTran 2.0 (Cat# [TT210002]).