

## Product datasheet for **RC205690**

### PLAGL2 (NM\_002657) Human Tagged ORF Clone

#### Product data:

Product Type:	Expression Plasmids
Product Name:	PLAGL2 (NM_002657) Human Tagged ORF Clone
Tag:	Myc-DDK
Symbol:	PLAGL2
Synonyms:	ZNF900
Mammalian Cell Selection:	Neomycin
Vector:	pCMV6-Entry (PS100001)
E. coli Selection:	Kanamycin (25 ug/mL)



[View online »](#)

**ORF Nucleotide Sequence:**

>RC205690 representing NM\_002657  
 Red=Cloning site Blue=ORF Green=Tags(s)

TTTTGTAATACGACTCACTATAGGGCGGCCGGGAATTCGTCGACTGGATCCGGTACCGAGGAGATCTGCC  
 GCC**CGGATCGCC**

ATGACCACATTTTACCAGCGTCCCCCTGGATTCAAGATGCAAAGCAGGAGGAGGAAGTGGGCTGGA  
 AACTAGTTCACAGCCTCGGGCCGGGAGCGGAGAGTCAAGTGAAGTGCCAATGTGAAATTTCCGGAAC  
 ACCTTTCTCAAATGGGGAGAAGCTGAGGCCTCACAGCCTCCCGCAACCAGAGCAGAGACCATATAGCTGC  
 CCTCAGCTGCACTGTGGCAAGGCTTTTGTCTCAAATACAAGCTGTATAGGCACATGGCCACCCACTCAG  
 CCCAGAAACCCACCAGTGTATGTACTGTGATAAGATGTTTACCAGCAAGGACCATCTGCGGAACCATCT  
 GCAGACCCATGATCCTAACAAAGAGGCCCTCCACTGCTCTGAGTGCAGTAAAGATTACAATACGAAGCTG  
 GGCTACCGGCGCCACCTGGCCATGCATGCTGCCAGCAGCGGTGACCTCAGCTGCAAGGTGTGCTGCAGA  
 CCTTTGAGAGTACCCAGGCCCTGTAGAGCACCTGAAGGCCCACTCACGCCGGTAGCAGCGGTGCCAA  
 GGAGAAGAAGCACCCCTGTGACCACTGCGACCGCGGTTCTATACTCGTAAGGATGTACGGCGGCACCTA  
 GTGGTGCACACAGGCCGTAAGGACTTCCTGTGCCAGTACTGTGCCAGCGGTTTGGCCGTAAGGACCACC  
 TGACGCGTCAATGCAAGAAGAGCCACTCGCAGGAGCTGCTCAAGATCAAGACAGAGCCCGTGGACATGTT  
 AGGCCTACTCAGCTGCAGCTCCACAGTCAAGTGAAGGAAGAGCTGAGCCCTGTGCTGTGCATGGCCTCT  
 CGGGACGTAATGGGGACCAAGGCCTTCCCTGGCATGTTGCCATGGGCATGTATGGTGCCACATCCCTA  
 CCATGCCAGCACGGGCGTGCCACACTCCCTGGTGACAACACGCTGCCCATGGGTATGAGCTACCTCT  
 GGAATCCTCACCTATCTTCCCCAGCTCAGCTCCCTCCAAAATACCAGTTGGATCTACCTCATACTTG  
 CCCGACAAATGGCCAAAGTGGAGGTGGATAGTTTTCTGGCGGAGCTTCTGGAAGCCTGTCTCTCAT  
 CCGCTGAACCCAGCCCGCTCACCTCAGCCGGCGCAGCTGCGGCCCTCCTAGATGAAGCACTGCTTGC  
 CAAGAGCCCGCCAAACCTCTCTGAGGCCCTCTGCGCTGCTAATGTGGACTTCTCCACCTACTGGGCTTT  
 CTTCCACTCAACCTGCCCGGTGTAACCCACCTGGGGCCACAGGAGCCTGGTATGGGCTACTCCAGG  
 CTGAGGCACAGCCCTGTTACCACTTTGCAAGCTCAGCCTCAAGATTCCCAGGAGCTGGGGGACCACT  
 GAACTTTGGGCTCTGCACTCCTGCTCTTACGCTGCTGCTGAGTAGCACCACCTGCCTCGT  
 TTCATCAAGCATTCCAG

AG**CGGACCG**ACGCGTACGCGGCCGCTCGAGCAGAACTCATCTCAGAAGAGGATCTGGCAGCAAATGATATCC  
 TGGATTACAAGGATGACGACGATAAGGTTTAA

**Protein Sequence:**

>RC205690 representing NM\_002657  
 Red=Cloning site Green=Tags(s)

MTTFFTSVPPWIQDAKQEEVGVWKL VPRPRGREAESQVKCQCEISGTPFSNGEKL RPHSLPQPEQRPYSC  
 PQLHCGKAFASKYKLYRHMATHSAQKPHQCMYCDKMFHRKDHLRNHLQTHDPNKEALHCSECGKNYNTKL  
 GYRRHLAMHAASSGDL SCKVCLQTFESTQALLEHLKAHSRRVAGGAKEKKHPCDHCDRRFYTRKDVRRHL  
 VVHTGRKDFLCQYCAQRFGRKDHLTRHVKKSQSQELLKIKTEPVDMLGLLSCSSTVSVKEELSPVLCMAS  
 RDVMGTFKAFPGMLPMGMYGAHIPTMPSTGVPHSLVHNTLPMGMSYPLESSPISSPAQLPPKYQLGSTSYL  
 PDKLPKVEVDSFLAELPGSLSSAEPQPASPQAAAAALLDEALLAKSPANLSEALCAANVDFSHLLGF  
 LPLNLPCCNPPGATGGLVMGYSQAEAPLLTTLQAQPQDSPGAGGPLNFGPLHSLPPVFTSGLSSTTLPR  
 FHQAFQ

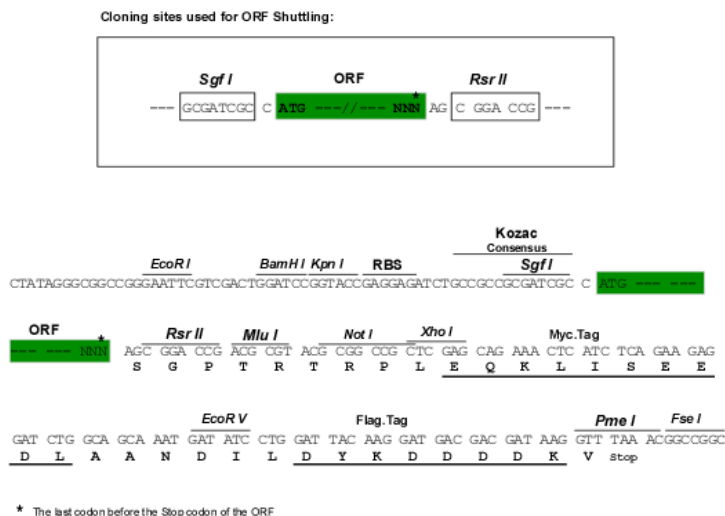
**SGP**TRRRLEQKLISEEDLAANDILDYKDDDDKV

**Chromatograms:**

[https://cdn.origene.com/chromatograms/mg2941\\_e01.zip](https://cdn.origene.com/chromatograms/mg2941_e01.zip)

**Restriction Sites:**

Sgfl-RsrII

**Cloning Scheme:**


**ACCN:** NM\_002657

**ORF Size:** 1488 bp

**OTI Disclaimer:** Due to the inherent nature of this plasmid, standard methods to replicate additional amounts of DNA in E. coli are highly likely to result in mutations and/or rearrangements. Therefore, OriGene does not guarantee the capability to replicate this plasmid DNA. Additional amounts of DNA can be purchased from OriGene with batch-specific, full-sequence verification at a reduced cost. Please contact our customer care team at [custsupport@origene.com](mailto:custsupport@origene.com) or by calling 301.340.3188 option 3 for pricing and delivery.

The molecular sequence of this clone aligns with the gene accession number as a point of reference only. However, individual transcript sequences of the same gene can differ through naturally occurring variations (e.g. polymorphisms), each with its own valid existence. This clone is substantially in agreement with the reference, but a complete review of all prevailing variants is recommended prior to use. [More info](#)

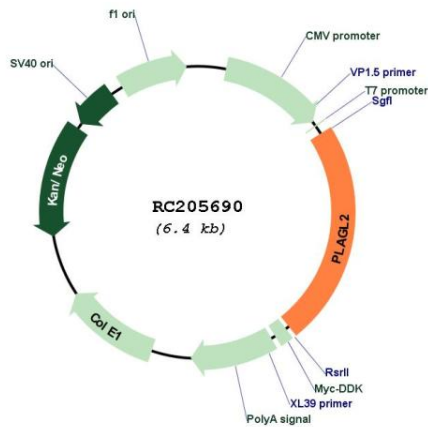
**OTI Annotation:** This clone was engineered to express the complete ORF with an expression tag. Expression varies depending on the nature of the gene.

**Components:** The ORF clone is ion-exchange column purified and shipped in a 2D barcoded Matrix tube containing 10ug of transfection-ready, dried plasmid DNA (reconstitute with 100 ul of water).

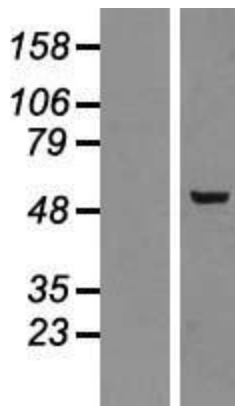
- Reconstitution Method:**
1. Centrifuge at 5,000xg for 5min.
  2. Carefully open the tube and add 100ul of sterile water to dissolve the DNA.
  3. Close the tube and incubate for 10 minutes at room temperature.
  4. Briefly vortex the tube and then do a quick spin (less than 5000xg) to concentrate the liquid at the bottom.
  5. Store the suspended plasmid at -20°C. The DNA is stable for at least one year from date of shipping when stored at -20°C.

RefSeq:	<a href="#">NM_002657.3</a>
RefSeq Size:	5640 bp
RefSeq ORF:	1491 bp
Locus ID:	5326
UniProt ID:	<a href="#">Q9UPG8</a>
Cytogenetics:	20q11.21
Domains:	zf-C2H2
Protein Families:	Transcription Factors
MW:	54.4 kDa
Gene Summary:	Pleiomorphic adenoma gene-like 2 is a zinc-finger protein that recognizes DNA and/or RNA. [provided by RefSeq, Jul 2008]

**Product images:**



Circular map for RC205690



Western blot validation of overexpression lysate (Cat# [LY419191]) using anti-DDK antibody (Cat# [TA50011-100]). Left: Cell lysates from untransfected HEK293T cells; Right: Cell lysates from HEK293T cells transfected with RC205690 using transfection reagent MegaTran 2.0 (Cat# [TT210002]).