

Product datasheet for **RC205688**

SPDEF (NM_012391) Human Tagged ORF Clone

Product data:

Product Type:	Expression Plasmids
Product Name:	SPDEF (NM_012391) Human Tagged ORF Clone
Tag:	Myc-DDK
Symbol:	SPDEF
Synonyms:	bA375E1.3; PDEF
Mammalian Cell Selection:	Neomycin
Vector:	pCMV6-Entry (PS100001)
E. coli Selection:	Kanamycin (25 ug/mL)
ORF Nucleotide Sequence:	>RC205688 ORF sequence Red=Cloning site Blue=ORF Green=Tags(s)

TTTTGTAATACGACTCACTATAGGGCGGCCGGAATTCTGTCGACTGGATCCGGTACCGAGGAGATCTGCC
 GCC**CGATCGCC**

ATGGGCAGCGCCAGCCCGGGTCTGAGCAGCGTATCCCCAGCCACCTCCTGCTGCCCCCGACACGGTGT
 CGCGGACAGGCTTGGAGAAGGCGGCAGCGGGGAGTGGGTCTCGAGAGACGGGACTGGAGTCCAGTCC
 ACCCGCCACGCCGAGCAGGGCCTGTCCGCCTTCTACCTCTCTACTTTGACATGCTGTACCCTGAGGAC
 AGCAGCTGGGCAGCCAAGGCCCTGGGGCAGCAGTCGGGAGGAGCCACCTGAGGAGCCTGAGCAGTGCC
 CGGTCATTGACAGCCAAGCCCCAGCGGGCAGCCTGGACTTGGTGCCCGGGGGCTGACCTTGAGGAGCA
 CTCGCTGGAGCAGGTGCAGTCCATGGTGGTGGCGAAGTCTCAAGGACATCGAGACGGCCTGCAAGCTG
 CTCAACATCACCGCAGATCCCATGGACTGGAGCCCCAGCAATGTGCAGAAGTGGCTCCTGTGGACAGAGC
 ACCAATACCGGCTGCCCCCATGGGCAAGGCCTTCCAGGAGCTGGCGGGCAAGGAGCTGTGCGCCATGTC
 GGAGGAGCAGTTCGCCAGCGCTCGCCCCCTGGGTGGGGATGTGCTGCACGCCACCTGGACATCTGGAAG
 TCAGCGGCCTGGATGAAAGAGCGGACTTCACCTGGGGCGATTCACTACTGTGCCTCGACCACTGAGGAGA
 GCTGGACCGACAGCGAGGTGGAATCATGCTCCGGGCAGCCATCCACCTGTGGCAGTTCTCAAGGA
 GTTGCTACTCAAGCCCCACAGCTATGGCCGCTTCATTAGGTGGCTCAACAAGGAGAAGGGCATCTTCAA
 ATTGAGGACTCAGCCAGGTGGCCCGCTGTGGGCATCCGCAAGAACCGTCCCGCCATGAACACGACA
 AGCTGAGCCGCTCATCCGCCAGTATTACAAGAAGGGCATCATCCGGAAGCCAGACATCTCCAGCGCCT
 CGTCTACCACTTCGTGCACCCCATC

ACGCGTACGCGGCCGCTCGAGCAGAACTCATCTCAGAAGAGGATCTGGCAGCAAATGATATCCTGGATT
 ACAAGGATGACGACGATAAGGTTTAA


[View online »](#)

Protein Sequence: >RC205688 protein sequence
 Red=Cloning site Green=Tags(s)

MGSASPLGLSSVSPSHLLLPDVTVSRTGLEKAAAGAVGLERRDWSPSPATPEQGLSAFYLSYFDMLYPED
 SSWAAKAPGASSREEPPEEQPCVIDSQAPAGSLDLVPGGLTLEHSLEQVQSMVVGEVLKDIETACKL
 LNITADPMDWSPSNVQKWLWTEHQYRLPPMGKAFQELAGKELCAMSEEQFRQRSPLGGDVLHAHLDIWK
 SAAWMKERTSPGAIHYCASTSEESWTDSEVDSSCSGQPIHLWQFLKELLLKPHSYGRFIRWLNKEKGIFK
 IEDSAQVARLWGIRKNRPAMNYDKLSRSIRQYKKGIIRKPDISQRLVYQFVHPI

TRTRPLEQKLISEEDLAANDILDYKDDDDKV

Chromatograms: https://cdn.origene.com/chromatograms/mk6574_h09.zip

Restriction Sites: SgfI-MluI

Cloning Scheme:



ACCN: NM_012391

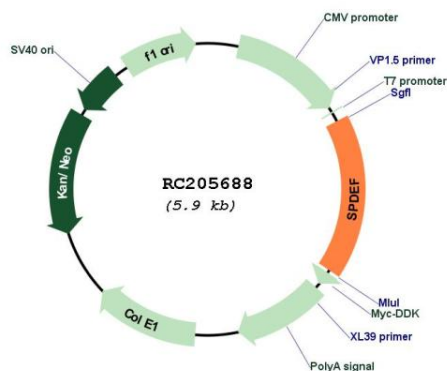
ORF Size: 1005 bp

OTI Disclaimer: Due to the inherent nature of this plasmid, standard methods to replicate additional amounts of DNA in E. coli are highly likely to result in mutations and/or rearrangements. Therefore, OriGene does not guarantee the capability to replicate this plasmid DNA. Additional amounts of DNA can be purchased from OriGene with batch-specific, full-sequence verification at a reduced cost. Please contact our customer care team at custsupport@origene.com or by calling 301.340.3188 option 3 for pricing and delivery.

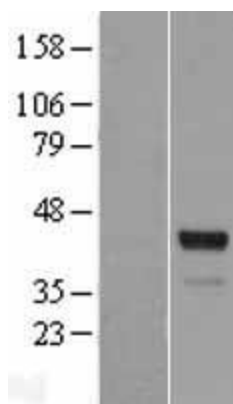
The molecular sequence of this clone aligns with the gene accession number as a point of reference only. However, individual transcript sequences of the same gene can differ through naturally occurring variations (e.g. polymorphisms), each with its own valid existence. This clone is substantially in agreement with the reference, but a complete review of all prevailing variants is recommended prior to use. [More info](#)

OTI Annotation:	This clone was engineered to express the complete ORF with an expression tag. Expression varies depending on the nature of the gene.
Components:	The ORF clone is ion-exchange column purified and shipped in a 2D barcoded Matrix tube containing 10ug of transfection-ready, dried plasmid DNA (reconstitute with 100 ul of water).
Reconstitution Method:	<ol style="list-style-type: none"> 1. Centrifuge at 5,000xg for 5min. 2. Carefully open the tube and add 100ul of sterile water to dissolve the DNA. 3. Close the tube and incubate for 10 minutes at room temperature. 4. Briefly vortex the tube and then do a quick spin (less than 5000xg) to concentrate the liquid at the bottom. 5. Store the suspended plasmid at -20°C. The DNA is stable for at least one year from date of shipping when stored at -20°C.
Note:	Plasmids are not sterile. For experiments where strict sterility is required, filtration with 0.22um filter is required.
RefSeq:	<u>NM_012391.3</u>
RefSeq Size:	1914 bp
RefSeq ORF:	1008 bp
Locus ID:	25803
UniProt ID:	<u>O95238</u>
Cytogenetics:	6p21.31
Domains:	ETS, SAM_PNT
Protein Families:	Transcription Factors
MW:	37.5 kDa
Gene Summary:	The protein encoded by this gene belongs to the ETS family of transcription factors. It is highly expressed in the prostate epithelial cells, and functions as an androgen-independent transactivator of prostate-specific antigen (PSA) promoter. Higher expression of this protein has also been reported in brain, breast, lung and ovarian tumors, compared to the corresponding normal tissues, and it shows better tumor-association than other cancer-associated molecules, making it a more suitable target for developing specific cancer therapies. Alternatively spliced transcript variants encoding different isoforms have been found for this gene. [provided by RefSeq, Nov 2011]

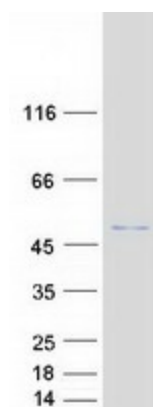
Product images:



Circular map for RC205688



Western blot validation of overexpression lysate (Cat# [LY415796]) using anti-DDK antibody (Cat# [TA50011-100]). Left: Cell lysates from untransfected HEK293T cells; Right: Cell lysates from HEK293T cells transfected with RC205688 using transfection reagent MegaTran 2.0 (Cat# [TT210002]).



Coomassie blue staining of purified SPDEF protein (Cat# [TP305688]). The protein was produced from HEK293T cells transfected with SPDEF cDNA clone (Cat# RC205688) using MegaTran 2.0 (Cat# [TT210002]).