

Product datasheet for **RC205687**

AGFG2 (NM_006076) Human Tagged ORF Clone

Product data:

Product Type:	Expression Plasmids
Product Name:	AGFG2 (NM_006076) Human Tagged ORF Clone
Tag:	Myc-DDK
Symbol:	AGFG2
Synonyms:	HRBL; RABR
Mammalian Cell Selection:	Neomycin
Vector:	pCMV6-Entry (PS100001)
E. coli Selection:	Kanamycin (25 ug/mL)



[View online »](#)

ORF Nucleotide Sequence:

>RC205687 ORF sequence
 Red=Cloning site Blue=ORF Green=Tags(s)

TTTTGTAATACGACTCACTATAGGGCGGCCGGGAATTCGTCGACTGGATCCGGTACCGAGGAGATCTGCC
 GCC**GCGATCGCC**

ATGGTGATGGCGCGAAGAAGGGCCCGGGCCCGGGCGCGGGGTACGCGGGGCAAGCGGAGCGGAGG
 CGGCTCGGAGGTGTGGTGCCGTGCGGTGCGGGAGCTGGGTGGCTGCAGCCAGGCCGGGAACCGCCACTG
 CTTGAGTGCGCCACGCGGGGTACCTACGTGGATATCACCGTGGCAGCTTCGTGTGCAACCCTGC
 TCCGGCTCCTGAGAGGGCTGAACCCCTCATCGTGTCAAGTCAATCTCCATGACAACCTTCACTGAGC
 CTGAAGTAGTATTCTGCAATCCCGTGGAAATGAGGTTTGCCGGAAGATTTGGTTGGTCTGTTTATGTC
 TCGGACATCTTAGTACCAGATTCCAGGGATCCTCAGAAAGTGAAGGAGTTTCTCCAGAAAAATATGAG
 AAGAAGAGATGGTATGTCCCCCAGACCAAGTCAAGGGGCCACTATACCAAAGGCAGTGCCTCCACCC
 CTGTGCAGGGCTCCATCCAGAAGGAAGCCCTTCGGACTTCTGGGTGATCCTGCACCGTCTCTCTC
 AGTTGCTGCCTCCACCTCGAGCCAGCCCGTCAGTCAGTCTCACGCTCGGACATCCAGGCCCGGAGCACT
 CAGCCACCTCCCCACTCCTGTCAAAAAGCCAGTACTGACCTGCTGGCTGACATCGGTGGAGACCCCT
 TTGCTGCACCCAGATGGCACCAGCTTTTGTGCAATCCCTGCCTTTGGGGCCAGACACCTTCCAAGG
 AGGCTTTGCCAATTTGATGCCTTTAGCAGTGGCCCCAGCTCTTCTGTGTTTGAAGCCTCCCTCCAGCT
 GGTCAAGCCTCGTTCAGGCCAGCCAACCTCCTGCAGGGAGCAGCCAGGGGACTCCATTTGGTGCCACTC
 CCCTGGCACCCGCCAGTCAGCCAACAGCCTCGCAGACGTGGGCAGCTTCTGGGACCCGGGGTGGCCGC
 TGCAGGTGTTCTAGCAGCCTCTTCGGGATGGCTGGCCAGGTCCCCCGCTCCAGTCTGTACGACGGGC
 GCGCGCGCGGCAGCAGCACAGGGCTGGCCTTTGGAGCCTTACTAACCCTTTCACAGCTCCCGCCGCC
 AGTCCCCGCTGCCTTCCACCAACCCGTTCCAGCCAATGGCTTGGCGCCAGGGCCCGCTTTGGGATGAG
 CAGTGCTGGGCCTGGCTTCCCCCAGGCAGTGCCACCCACTGGGGCTTTGCCAGCTCCTTCCAGCACCG
 CTGTTCCCCCGCAGACCCCGCTTGTTCAGCAGAGAATGGCTCTTCTTCGGGGACTTAGGATCAGCCA
 AGTTGGGGCAGAGGCCACTGAGCCAGCCAGCTGGGATCTCCACCAACCCCTTCATGACTGGACCCTCATC
 AAGCCATTGCGCTCAAACCTCAACCACCAACCCCTTCTTG

ACGCGTACGCGGCCGCTCGAGCAGAACTCATCTCAGAAGAGGATCTGGCAGCAAATGATATCCTGGATT
 ACAAGGATGACGACGATAAGGTTTAA

Protein Sequence:

>RC205687 protein sequence
 Red=Cloning site Green=Tags(s)

MVMAAKKGPVGGVSGGKAEAEAAASEVWCRRVRELGGCSQAGNRHCFECAQRGVTVYVDITVGSFVCTTC
 SGLLRGLNPPHRVKSISMTTFTEPEVVFLQSRGNEVCRKIWLGLFDARTSLVPDSRDPQKVKEFLQEKYE
 KKRWYVPPDQVKGPTYTKGSASTPVQGSIPGKPLRLLGDPAPSLSVAASTSSQPVSQSHARTSQRST
 QPPPHSSVKASTDLLADIGDPFAAPQMAPAFAAFPAFGGQTPSQGGFANFADFSSGPSSSVFGLPPA
 GQASFQAQPTPAGSSQGTPFGATPLAPASQPNLADVGSFLGPGVPAAGVPSSLFGMAGQVPLQSVTTG
 GGGGSSTGLAFGAFTNPFAPAAQSPLPSTNPFQPNGLAPGPGFMSSAGPFPQAVPPTGAFASSFPAP
 LFPPQTPLVQQNGSSFGLGSAKLGRPLSQPAGISTNPFMTGPSSSPFASKPPTNPFLL

TRTRPLEQKLISEEDLAANDILDYKDDDDKV

Chromatograms:

https://cdn.origene.com/chromatograms/mk6176_a04.zip

Restriction Sites:

Sgfl-Mlul

Cloning Scheme:

Cloning sites used for ORF Shutting:



* The last codon before the Stop codon of the ORF

ACCN: NM_006076

ORF Size: 1443 bp

OTI Disclaimer: The molecular sequence of this clone aligns with the gene accession number as a point of reference only. However, individual transcript sequences of the same gene can differ through naturally occurring variations (e.g. polymorphisms), each with its own valid existence. This clone is substantially in agreement with the reference, but a complete review of all prevailing variants is recommended prior to use. [More info](#)
OTI Annotation: This clone was engineered to express the complete ORF with an expression tag. Expression varies depending on the nature of the gene.

Components: The ORF clone is ion-exchange column purified and shipped in a 2D barcoded Matrix tube containing 10ug of transfection-ready, dried plasmid DNA (reconstitute with 100 ul of water).

Reconstitution Method:

1. Centrifuge at 5,000xg for 5min.
2. Carefully open the tube and add 100ul of sterile water to dissolve the DNA.
3. Close the tube and incubate for 10 minutes at room temperature.
4. Briefly vortex the tube and then do a quick spin (less than 5000xg) to concentrate the liquid at the bottom.
5. Store the suspended plasmid at -20°C. The DNA is stable for at least one year from date of shipping when stored at -20°C.

RefSeq: [NM_006076.3](#), [NP_006067.2](#)
RefSeq Size: 4821 bp

RefSeq ORF: 1446 bp

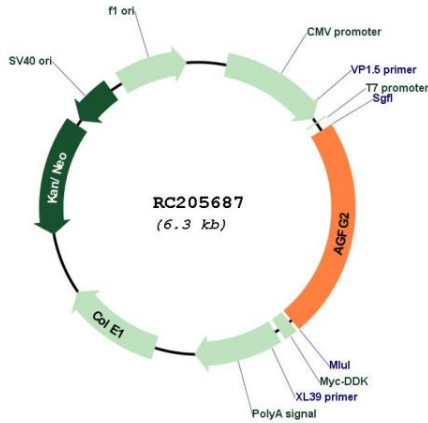
Locus ID: 3268

UniProt ID: [O95081](#)
Cytogenetics: 7q22.1

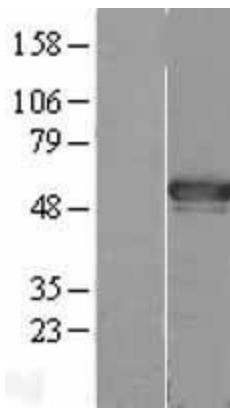
MW: 48.9 kDa

Gene Summary: This gene is a member of the HIV-1 Rev binding protein (HRB) family and encodes a protein with one Arf-GAP zinc finger domain, several phe-gly (FG) motifs, and four asn-pro-phe (NPF) motifs. This protein interacts with Eps15 homology (EH) domains and plays a role in the Rev export pathway, which mediates the nucleocytoplasmic transfer of proteins and RNAs. Alternatively spliced transcript variants have been described, but their biological validity has not been determined. [provided by RefSeq, Feb 2013]

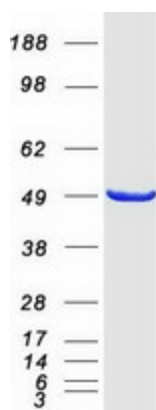
Product images:



Circular map for RC205687



Western blot validation of overexpression lysate (Cat# [LY401830]) using anti-DDK antibody (Cat# [TA50011-100]). Left: Cell lysates from untransfected HEK293T cells; Right: Cell lysates from HEK293T cells transfected with RC205687 using transfection reagent MegaTran 2.0 (Cat# [TT210002]).



Coomassie blue staining of purified AGFG2 protein (Cat# [TP305687]). The protein was produced from HEK293T cells transfected with AGFG2 cDNA clone (Cat# RC205687) using MegaTran 2.0 (Cat# [TT210002]).