

## Product datasheet for RC205681L1

### ORC5L (ORC5) (NM\_002553) Human Tagged Lenti ORF Clone

#### Product data:

Product Type:	Expression Plasmids
Product Name:	ORC5L (ORC5) (NM_002553) Human Tagged Lenti ORF Clone
Tag:	Myc-DDK
Symbol:	ORC5L
Synonyms:	ORC5L; ORC5P; ORC5T; PPP1R117
Mammalian Cell Selection:	None
Vector:	pLenti-C-Myc-DDK (PS100064)
E. coli Selection:	Chloramphenicol (34 ug/mL)
ORF Nucleotide Sequence:	The ORF insert of this clone is exactly the same as(RC205681).
Restriction Sites:	Sgfl-MluI
Cloning Scheme:	

Cloning sites used for ORF Shuttling:



\* The last codon before the Stop codon of the ORF.

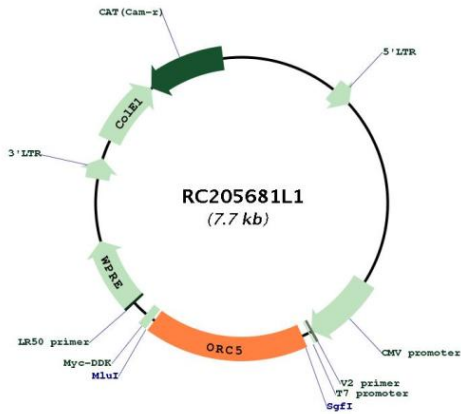
ACCN:	NM_002553
ORF Size:	1305 bp



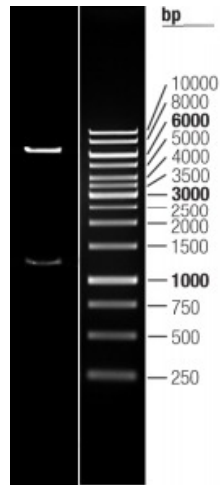
[View online »](#)

<b>OTI Disclaimer:</b>	The molecular sequence of this clone aligns with the gene accession number as a point of reference only. However, individual transcript sequences of the same gene can differ through naturally occurring variations (e.g. polymorphisms), each with its own valid existence. This clone is substantially in agreement with the reference, but a complete review of all prevailing variants is recommended prior to use. <a href="#">More info</a>
<b>OTI Annotation:</b>	This clone was engineered to express the complete ORF with an expression tag. Expression varies depending on the nature of the gene.
<b>Components:</b>	The ORF clone is ion-exchange column purified and shipped in a 2D barcoded Matrix tube containing 10ug of transfection-ready, dried plasmid DNA (reconstitute with 100 ul of water).
<b>Reconstitution Method:</b>	<ol style="list-style-type: none"><li>1. Centrifuge at 5,000xg for 5min.</li><li>2. Carefully open the tube and add 100ul of sterile water to dissolve the DNA.</li><li>3. Close the tube and incubate for 10 minutes at room temperature.</li><li>4. Briefly vortex the tube and then do a quick spin (less than 5000xg) to concentrate the liquid at the bottom.</li><li>5. Store the suspended plasmid at -20°C. The DNA is stable for at least one year from date of shipping when stored at -20°C.</li></ol>
<b>RefSeq:</b>	<a href="#">NM_002553.2</a>
<b>RefSeq Size:</b>	1968 bp
<b>RefSeq ORF:</b>	1308 bp
<b>Locus ID:</b>	5001
<b>UniProt ID:</b>	<a href="#">O43913</a>
<b>Cytogenetics:</b>	7q22.1-q22.2
<b>Protein Pathways:</b>	Cell cycle
<b>MW:</b>	50.3 kDa
<b>Gene Summary:</b>	The origin recognition complex (ORC) is a highly conserved six subunit protein complex essential for the initiation of the DNA replication in eukaryotic cells. Studies in yeast demonstrated that ORC binds specifically to origins of replication and serves as a platform for the assembly of additional initiation factors such as Cdc6 and Mcm proteins. The protein encoded by this gene is a subunit of the ORC complex. Alternatively spliced transcript variants encoding distinct isoforms have been described. [provided by RefSeq, Oct 2010]

Product images:



Circular map for RC205681L1



Double digestion of RC205681L1 using SgfI and MluI