

Product datasheet for **RC205675**

Rabphilin 3A (RPH3A) (NM_014954) Human Tagged ORF Clone

Product data:

Product Type:	Expression Plasmids
Product Name:	Rabphilin 3A (RPH3A) (NM_014954) Human Tagged ORF Clone
Tag:	Myc-DDK
Symbol:	Rabphilin 3A
Mammalian Cell Selection:	Neomycin
Vector:	pCMV6-Entry (PS100001)
E. coli Selection:	Kanamycin (25 ug/mL)



[View online »](#)

**ORF Nucleotide
Sequence:**

>RC205675 ORF sequence
 Red=Cloning site Blue=ORF Green=Tags(s)

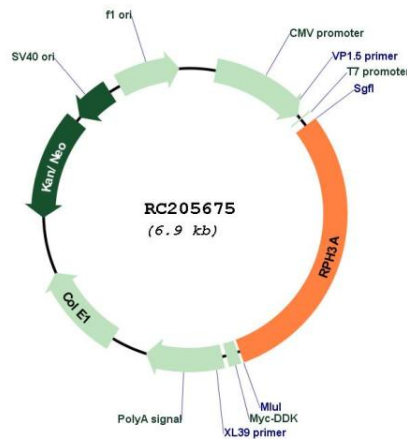
TTTTGTAATACGACTCACTATAGGGCGGCCGGGAATTCGTCGACTGGATCCGGTACCGAGGAGATCTGCC
 GCC**CGGATCGCC**

ATGACTGACACCGTGTTTCAGCAACAGTTCTAACCGTTGGATGTACCCAGTGACCCGCCCTTCAATCAA
 AGCTCCAGGCAGGCTGGTCCGTCCACCCGGTGGTCAGCCTGACAGGCAGAGGAAGCAGGAAGAGCTGAC
 TGATGAGGAGAAAAGAAATCATCAACAGGGTGATTGCTCGAGCTGAGAAAAATGGAAGAGATGGAGCAGGAG
 CGAATCGGACGCCTGGTGGACCGCTAGAAAACATGAGGAAGAACGTGGCTGGAGATGGGGTGAACCGCT
 GCATACTGTGGAGAACAGCTGGGGATGCTGGGCTCTGCCTGTGTAGTATGTGAGGACTGTAAGAAGAA
 CGTCTGCACCAAGTGGGAGTGGAGACCAACAACCGCCTGCATTCTGTGGCTCTGCAAAATCTGCATT
 GAGCAGAGGGAGGTGGAAGCGTTCTGGAGCGTGGTTCTTCAAAGGCTTCCCAACAGGTCTCCAC
 AGCCTATGCCTATAAAGAAGACCAAGCCCAGCAGCCTGTGAGTGCCTGCTGCCCTGAACAGCCTGC
 TCCTGAGCCCAAGCACCTGCCCGGGTCCAGCTCGAGGTGACAGTGAAGATAGGAGGGGCCGGGTCCAG
 AAGACAGGCCCTGACCCAGCCTCTGCTCCCGGGGAGGAAACTATGGGCCCTCCCGTGCAGAGGCCCTCCG
 AGGCACGAATGAGCTCATCTAGCCGAGATTGAGAGAGCTGGGACCACAGTGGGGTGGTGGAGACTCCAG
 CCGGAGCCAGCAGGTTTGGAGACGGGCAACTCAGTCCAGGCCTCCAGACCTGCCCCAGGCTCGGTGCAG
 AGCCCAGCGCCACCTCAGCCTGGCAGCCAGGGACCCAGGAGGAAGCAGACCGGGTCTGGGCCAGCAG
 GACGCTTTCAGATCAGAAGCCAGAGGTGGCTCCGAGCGACCCTGGGACCACTGCCCCACCCCGAGAGGA
 GAGAACAGGGGGAGTCGGGGCTACCCAGCAGTTGGAGCCAGAGAGGACCGAATGAGCCACCCCTCCGGA
 CCCTATTCCTCAAGCATCTGCAGCTGCCCCAGCCTGCTGCAGCCCGCCAGCCACCACCCCGAGAGGAG
 AGGAAGAGGAAGCCAACAGCTACGATTCCGATGAAGCAACCCTGGGTGCCCTGGAATTCAGCCTTCT
 CTACGACCAGGACAACAGCTCCCTGCAGTGCACCATCATTAAAGCCAAGGGCCTGAAGCCATGGATTCA
 AATGGCTTGGCTGATCCCTACGTTAAGCTGCACCTCCTGCCGGGAGCCAGCAAGTCCAACAAGCTTCGTA
 CAAAACTCTGCGGAATACCCGGAACCCCATCTGGAATGAGACCCTCGTGTATCACGGCATCACCGATGA
 GGACATGCAAAGGAAGACCCCTCAGGATCTCCGTCTGTGATGAGGACAAATTCGGCCACAATGAATTTATT
 GGTGAGACCAGATTCTCCCTCAAGAACTGAAGCCCAACCAGAGGAAGAATTTCAACATCTGCCTGGAGC
 GAGTGATTCTATGAAACGTGCTGGGACCACCGGGTCCAGCCGAGGCATGGCCCTTATGAGGAAGAGCA
 GGTGGAGCGTGTGGTGACATCGAGGAGCGTGGCAAGATCCTGGTCTCCCTCATGTACAGCACACAGCAG
 GGAGGCCTCATTGTGGGATCATACGCTGCGTGCACCTGGCTGCCATGGACGCTAATGGCTACTCAGACC
 CATTTCGTAAGCTCTGGCTGAAACCGGACATGGGAAAGAAGGCCAAACACAAGACTCAAATTA AAAAGAA
 AACCTTGAATCCCGAATCAATGAGGAGTTTTTCTATGACATCAAACACAGTGACCTGGCAAAGAAGTCA
 CTGGACATTTTCAGTCTGGGACTATGACATCGGCAAGTCCAATGATTACATCGGAGGCTGCCAGCTGGGGA
 TCTCTGCCAAGGGAGAGCGCTTAAACACTGGTACGAGTGTCTGAAAAATAAAGACAAGAAGATAGAGCG
 CTGGCACAGCTACAGAATGAGAACCACGTGTCAAGTGAT

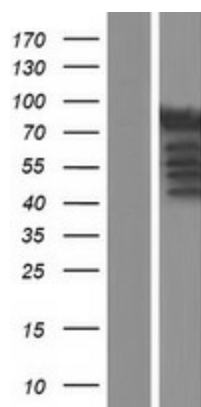
ACGCGTACGCGGGCGCTCGAGCAGAACTCATCTCAGAAGAGGATCTGGCAGCAATGATATCCTGGATT
 ACAAGGATGACGACGATAAGGTTTAA

Components:	The ORF clone is ion-exchange column purified and shipped in a 2D barcoded Matrix tube containing 10ug of transfection-ready, dried plasmid DNA (reconstitute with 100 ul of water).
Reconstitution Method:	<ol style="list-style-type: none"> 1. Centrifuge at 5,000xg for 5min. 2. Carefully open the tube and add 100ul of sterile water to dissolve the DNA. 3. Close the tube and incubate for 10 minutes at room temperature. 4. Briefly vortex the tube and then do a quick spin (less than 5000xg) to concentrate the liquid at the bottom. 5. Store the suspended plasmid at -20°C. The DNA is stable for at least one year from date of shipping when stored at -20°C.
RefSeq:	<u>NM_014954.2</u> , <u>NP_055769.2</u>
RefSeq Size:	4593 bp
RefSeq ORF:	2073 bp
Locus ID:	22895
UniProt ID:	<u>Q9Y2J0</u>
Cytogenetics:	12q24.13
Domains:	C2, RPH3A_effector
MW:	76.4 kDa
Gene Summary:	The protein encoded by this gene is thought to be an effector for RAB3A, which is a small G protein that acts in the late stages of neurotransmitter exocytosis. The encoded protein may be involved in neurotransmitter release and synaptic vesicle traffic. [provided by RefSeq, Dec 2016]

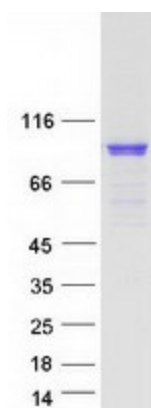
Product images:



Circular map for RC205675



Western blot validation of overexpression lysate (Cat# [LY414920]) using anti-DDK antibody (Cat# [TA50011-100]). Left: Cell lysates from untransfected HEK293T cells; Right: Cell lysates from HEK293T cells transfected with RC205675 using transfection reagent MegaTran 2.0 (Cat# [TT210002]).



Coomassie blue staining of purified RPH3A protein (Cat# [TP305675]). The protein was produced from HEK293T cells transfected with RPH3A cDNA clone (Cat# RC205675) using MegaTran 2.0 (Cat# [TT210002]).