

Product datasheet for **RC205672**

CBX1 (NM_006807) Human Tagged ORF Clone

Product data:

Product Type: Expression Plasmids
Product Name: CBX1 (NM_006807) Human Tagged ORF Clone
Tag: Myc-DDK
Symbol: CBX1
Synonyms: CBX; HP1-BETA; HP1Hs-beta; HP1Hsbeta; M31; MOD1; p25beta
Mammalian Cell Selection: Neomycin
Vector: pCMV6-Entry (PS100001)
E. coli Selection: Kanamycin (25 ug/mL)
ORF Nucleotide Sequence: >RC205672 ORF sequence
Red=Cloning site Blue=ORF Green=Tags(s)

TTTTGTAATACGACTCACTATAGGGCGGCCGGAATTCGTCGACTGGATCCGGTACCGAGGAGATCTGCC
GCC**CGATCGCC**

ATGGGGAAAAACAACAAGAAGAAAGTGGAGGAGGTGCTAGAAGAGGAGGAAGAGGAATATGTGGTGG
AAAAAGTTCTCGACCGTCGAGTGGTAAAGGGCAAAGTGGAGTACCTCCTAAAGTGAAGGGATTCTCAGA
TGAGGACAACACATGGGAGCCAGAAGAGAACCTGGATTGCCCGACCTCATTGCTGAGTTTCTGCAGTCA
CAGAAAACAGCACATGAGACAGATAAATCAGAGGGAGGCAAGCGCAAAGCTGATTCTGATTCTGAAGATA
AGGGAGAGGAGAGCAAACCAAGAAGAAGAAGAAGAGTCAAGAAAGCCACGAGGCTTTGCTCGAGGTTT
GGAGCCGGAGCGGATTATTGGAGCTACAGACTCCAGTGGAGAGCTCATGTTCTGATGAAATGGAAAAAC
TCTGATGAGGCTGACCTGGTCCCTGCCAAGGAAGCCAATGTCAAGTGCCACAGGTTGTCATATCCTTCT
ATGAGGAAAGGCTGACGTGGCATTCTACCCCTCGGAGGATGATGACAAAAAAGATGACAAGAAC

ACGCGTACGCGGCCGCTCGAGCAGAACTCATCTCAGAAGAGGATCTGGCAGCAAATGATATCCTGGATT
ACAAGGATGACGACGATAAGGTTTAA

Protein Sequence: >RC205672 protein sequence
Red=Cloning site Green=Tags(s)

MGKKQNKKKVEEVLEEEEEYVVEKVLDRRVVKGKVEYLLKWKGFSDENTWEPEENLDCPDLIAEFLQS
QKTAHETDKSEGGKRKADSDSEDKGEESKPKKKKEESEKPRGFARGLEPERIIGATDSSGELMFLMKWKN
SDEADLVPAKEANVKCPQVVISFYERLTWHSYPSEDDDKKDDKN

TRTRPLEQKLISEEDLAANDILDYKDDDDKV

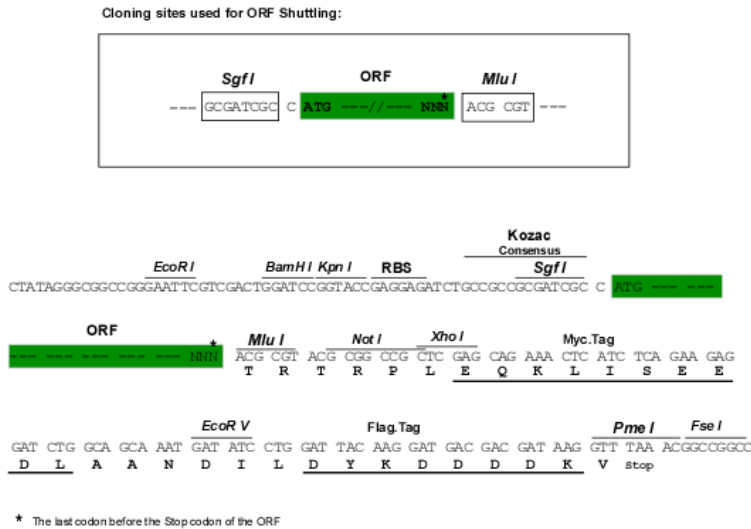
Chromatograms: https://cdn.origene.com/chromatograms/mk6063_e09.zip



[View online »](#)

Restriction Sites: SgfI-MluI

Cloning Scheme:



ACCN: NM_006807

ORF Size: 558 bp

OTI Disclaimer: The molecular sequence of this clone aligns with the gene accession number as a point of reference only. However, individual transcript sequences of the same gene can differ through naturally occurring variations (e.g. polymorphisms), each with its own valid existence. This clone is substantially in agreement with the reference, but a complete review of all prevailing variants is recommended prior to use. [More info](#)

OTI Annotation: This clone was engineered to express the complete ORF with an expression tag. Expression varies depending on the nature of the gene.

Components: The ORF clone is ion-exchange column purified and shipped in a 2D barcoded Matrix tube containing 10ug of transfection-ready, dried plasmid DNA (reconstitute with 100 ul of water).

Reconstitution Method:

1. Centrifuge at 5,000xg for 5min.
2. Carefully open the tube and add 100ul of sterile water to dissolve the DNA.
3. Close the tube and incubate for 10 minutes at room temperature.
4. Briefly vortex the tube and then do a quick spin (less than 5000xg) to concentrate the liquid at the bottom.
5. Store the suspended plasmid at -20°C. The DNA is stable for at least one year from date of shipping when stored at -20°C.

RefSeq: [NM_006807.5](#)

RefSeq Size: 2443 bp

RefSeq ORF: 558 bp

Locus ID: 10951

UniProt ID: [P83916](#)

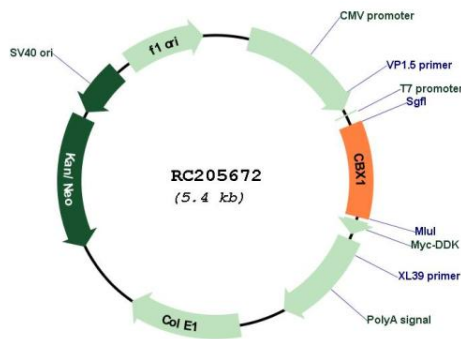
Cytogenetics: 17q21.32

Domains: CHROMO

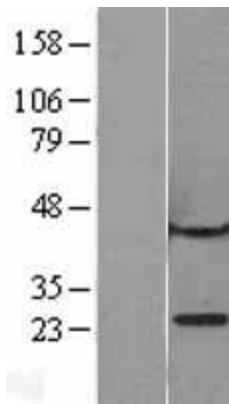
MW: 21.4 kDa

Gene Summary: This gene encodes a highly conserved nonhistone protein, which is a member of the heterochromatin protein family. The protein is enriched in the heterochromatin and associated with centromeres. The protein has a single N-terminal chromodomain which can bind to histone proteins via methylated lysine residues, and a C-terminal chromo shadow-domain (CSD) which is responsible for the homodimerization and interaction with a number of chromatin-associated nonhistone proteins. The protein may play an important role in the epigenetic control of chromatin structure and gene expression. Several related pseudogenes are located on chromosomes 1, 3, and X. Multiple alternatively spliced variants, encoding the same protein, have been identified. [provided by RefSeq, Jul 2008]

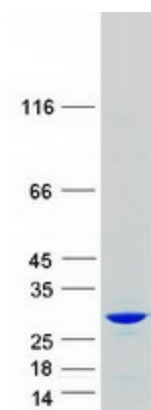
Product images:



Circular map for RC205672



Western blot validation of overexpression lysate (Cat# [LY426727]) using anti-DDK antibody (Cat# [TA50011-100]). Left: Cell lysates from untransfected HEK293T cells; Right: Cell lysates from HEK293T cells transfected with [RC225198] using transfection reagent MegaTran 2.0 (Cat# [TT210002]).



Coomassie blue staining of purified CBX1 protein (Cat# [TP305672]). The protein was produced from HEK293T cells transfected with CBX1 cDNA clone (Cat# RC205672) using MegaTran 2.0 (Cat# [TT210002]).