

## Product datasheet for **RC205671**

### ADRM1 (NM\_175573) Human Tagged ORF Clone

#### Product data:

Product Type:	Expression Plasmids
Product Name:	ADRM1 (NM_175573) Human Tagged ORF Clone
Tag:	Myc-DDK
Symbol:	ADRM1
Synonyms:	ARM-1; ARM1; GP110; PSMD16
Mammalian Cell Selection:	Neomycin
Vector:	pCMV6-Entry (PS100001)
E. coli Selection:	Kanamycin (25 ug/mL)
ORF Nucleotide Sequence:	>RC205671 ORF sequence Red=Cloning site Blue=ORF Green=Tags(s)

TTTTGTAATACGACTCACTATAGGGCGGCCGGAATTCGTCGACTGGATCCGGTACCGAGGAGATCTGCC  
GCC**CGATCGCC**

ATGACGACCTCAGGCGCGCTCTTTCCAAGCCTGGTGCCAGGCTCTCGGGGCGCCTCCAACAAGTACTTGG  
TGGAGTTTCGGGCGGAAAGATGTCCTGAAGGGGACCACCGTGACTCCGGATAAGCGGAAAGGGCTGGT  
GTACATTCAGCAGACGGACGACTCGCTTATCACTTCTGCTGGAAGGACAGGACGTCGGGAACGTGGAA  
GACGACTTGATCATCTTCCCTGACGACTGTGAGTTCAAGCGGGTCCCGCAGTGCCCGAGCGGGAGGGTCT  
ACGTGCTGAAGTTCAAGGAGGGTCCAAGCGGCTTTTCTTCTGGATGCAGGAACCAAGACAGACCAGGA  
TGAGGAGCATTGCCGAAAGTCAACGAGTATCTGAACAACCCCGATGCCTGGGGCACTGGGGCCAGC  
GGAAGCAGCGCCACGAACTCTCTGCGCTAGGCGGTGAGGGTGGCCTGCAGAGCCTGCTGGGAAACATGA  
GCCACAGCCAGCTCATGCAGCTCATCGGACCAGCCGGCCTCGGAGGACTGGGTGGGCTGGGGGCCCTGAC  
TGGACCTGGCCTGGCCAGTTTACTGGGGAGCAGTGGGCCCTCCAGGGAGCAGCTCCTCCTCCAGCTCCCGG  
AGCCAGTCGGCAGCGGTACCCCGTCAACACCTCTTCCACCCGTGCCACCCAGCCCTTCTGCTC  
CAGCAGCTGCCTCAGCAACTAGCCCGAGCCCGCGCCAGTTCGGGAATGGAGCCAGCACAGCAGCCAG  
CCCAGCCAGCCCATCCAGCTGAGCGACCTCCAGAGCATCCTGGCCACGATGAACGTACCAGCCGGGCCA  
GCAGGCGGCCAGCAAGTGGACCTGGCCAGTGTGCTGACGCGGAGATAATGGCTCCCATCCTCGCCAAGC  
CGGATGTCCAGGAGCGCCTGCTTCCCTACTTGCCATCTGGGGAGTCGCTGCCGCAGACCCGGATGAGAT  
CCAGAATACCCTGACCTCGCCCCAGTTCAGCAGGCCCTGGGCATGTTTCAGCGCAGCCTTGGCCTCGGGG  
CAGCTGGGCCCTCATGTGCCAGTTTCGGTCTGCCTGCAGAGGCTGTGGAGGCCGCAACAAGGGCGATG  
TGAAGCGTTTGCCAAAGCCATGCAGAACAACGCCAAGCCGAGCAGAAAGAGGGCGACACGAAGGACAA  
GAAGGACGAAGAGGAGGACATGAGCCTGGAC

**ACGCGT**ACGCGGCCGCTCGAGCAGAACTCATCTCAGAAGAGGATCTGGCAGCAATGATATCCTGGATT  
ACAAGGATGACGACGATAAGGTTTAA



[View online >](#)

**Protein Sequence:** >RC205671 protein sequence  
Red=Cloning site Green=Tags(s)

MTTSGALFPSLVPGSRGASNKYLVEFRAGKMSLKGTTVTPDKRKL VYIQQTDDSLIHFCWKDR TSGNVE  
 DDLIIFPDDCEFKRVPQCPSGRVYVLKFKAGSKRLFFWMQEPKTDQDEEHCRKVNEYLNPPMPGALGAS  
 GSSGHEL SALGGEGGLQSL LGNMSHSQMLQLIGPAGLGG LGGAL TGPGLASLLGSSGPPGSSSSSSR  
 SQSAAVTPSSTTSSTRATPAPSAPAAASATSPSPAPSSGNGASTAASPTQPIQLSDLQSILATMNV PAGP  
 AGGQQVDLASVLTPEIMAPILANADVQERLLPYLP SGESLPQTAD EIQNTLTSPQFQQALGMFSAALASG  
 QLGPLMCQFGLPAEAVEAANKGDVEAF AKAMQNNAKPEQKEGDTKDKKDEEEDMSLD

TRTRPLEQKLISEEDLAANDILDYKDDDDKV

**Chromatograms:** [https://cdn.origene.com/chromatograms/mk6420\\_g03.zip](https://cdn.origene.com/chromatograms/mk6420_g03.zip)

**Restriction Sites:** SgfI-MluI

**Cloning Scheme:**



**ACCN:** NM\_175573

**ORF Size:** 1221 bp

**OTI Disclaimer:** The molecular sequence of this clone aligns with the gene accession number as a point of reference only. However, individual transcript sequences of the same gene can differ through naturally occurring variations (e.g. polymorphisms), each with its own valid existence. This clone is substantially in agreement with the reference, but a complete review of all prevailing variants is recommended prior to use. [More info](#)

**OTI Annotation:** This clone was engineered to express the complete ORF with an expression tag. Expression varies depending on the nature of the gene.

**Components:** The ORF clone is ion-exchange column purified and shipped in a 2D barcoded Matrix tube containing 10ug of transfection-ready, dried plasmid DNA (reconstitute with 100 ul of water).

**Reconstitution Method:**

1. Centrifuge at 5,000xg for 5min.
2. Carefully open the tube and add 100ul of sterile water to dissolve the DNA.
3. Close the tube and incubate for 10 minutes at room temperature.
4. Briefly vortex the tube and then do a quick spin (less than 5000xg) to concentrate the liquid at the bottom.
5. Store the suspended plasmid at -20°C. The DNA is stable for at least one year from date of shipping when stored at -20°C.

**RefSeq:** [NM\\_175573.2](#)

**RefSeq Size:** 1492 bp

**RefSeq ORF:** 1224 bp

**Locus ID:** 11047

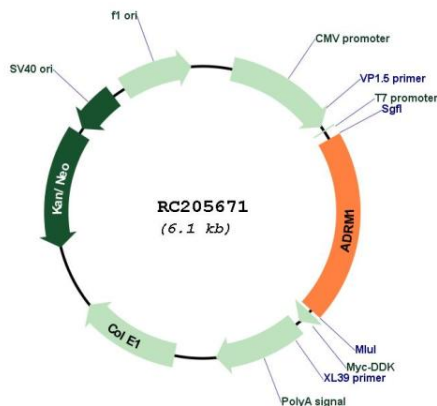
**UniProt ID:** [Q16186](#)

**Cytogenetics:** 20q13.33

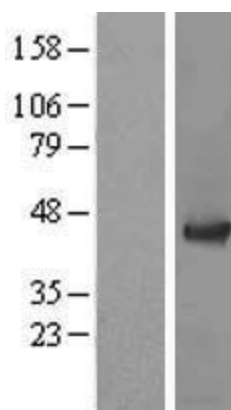
**MW:** 42.2 kDa

**Gene Summary:** This gene encodes a member of the adhesion regulating molecule 1 protein family. The encoded protein is a component of the proteasome where it acts as a ubiquitin receptor and recruits the deubiquitinating enzyme, ubiquitin carboxyl-terminal hydrolase L5. Increased levels of the encoded protein are associated with increased cell adhesion, which is likely an indirect effect of this intracellular protein. Dysregulation of this gene has been implicated in carcinogenesis. Alternative splicing results in multiple transcript variants. [provided by RefSeq, Jul 2013]

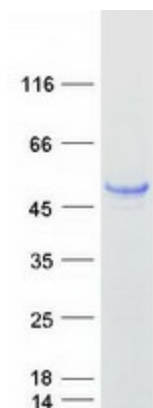
### Product images:



Circular map for RC205671



Western blot validation of overexpression lysate (Cat# [LY406279]) using anti-DDK antibody (Cat# [TA50011-100]). Left: Cell lysates from untransfected HEK293T cells; Right: Cell lysates from HEK293T cells transfected with RC205671 using transfection reagent MegaTran 2.0 (Cat# [TT210002]).



Coomassie blue staining of purified ADRM1 protein (Cat# [TP305671]). The protein was produced from HEK293T cells transfected with ADRM1 cDNA clone (Cat# RC205671) using MegaTran 2.0 (Cat# [TT210002]).