

## Product datasheet for **RC205668**

### TIMM10 (NM\_012456) Human Tagged ORF Clone

#### Product data:

Product Type: Expression Plasmids

Product Name: TIMM10 (NM\_012456) Human Tagged ORF Clone

Tag: Myc-DDK

Symbol: TIMM10

Synonyms: TIM10; TIM10A; TIMM10A

Mammalian Cell Selection: Neomycin

Vector: pCMV6-Entry (PS100001)

E. coli Selection: Kanamycin (25 ug/mL)

ORF Nucleotide Sequence: >RC205668 ORF sequence  
Red=Cloning site Blue=ORF Green=Tags(s)

TTTTGTAATACGACTCACTATAGGGCGGCCGGAATTCGTCGACTGGATCCGGTACCGAGGAGATCTGCC  
GCC**CGATCGCC**

ATGGATCCTCTCAGGGCCCAACAGCTGGCTGCGGAGCTGGAGGTGGAGATGATGGCCGATATGTACAACA  
GAATGACCAGTGCCTGCCACCGAAGTGTGTGCCTCCTCACTACAAGGAAGCAGAGCTCTCCAAGGGCGA  
GTCTGTGTGCCTGGACCGATGTGTCTTAAGTACCTGGACATCCATGAGCGGATGGGCAAAAAGTTGACA  
GAGTTGTCTATGCAGGATGAAGAGCTGATGAAGAGGGTGCAGCAGAGCTCTGGCCTGCA

**ACGCGT**ACGCGGCCGCTCGAGCAGAACTCATCTCAGAAGAGGATCTGGCAGCAAATGATATCCTGGATT  
ACAAGGATGACGACGATAAGGTTTAA

Protein Sequence: >RC205668 protein sequence  
Red=Cloning site Green=Tags(s)

MDPLRAQQLAAELEVEMMADMYNRMTSACHRKCVPPhyKEAELSKGESVCLDRCVSKYLDIHERMGKLT  
ELSMQDEELMKRVQSSGPA

**TRTRPLEQKLISEEDLAANDILDYKDDDDKV**

Chromatograms: [https://cdn.origene.com/chromatograms/mk6427\\_a12.zip](https://cdn.origene.com/chromatograms/mk6427_a12.zip)

Restriction Sites: SgfI-MluI



[View online »](#)

**Cloning Scheme:**


**ACCN:** NM\_012456

**ORF Size:** 270 bp

**OTI Disclaimer:** The molecular sequence of this clone aligns with the gene accession number as a point of reference only. However, individual transcript sequences of the same gene can differ through naturally occurring variations (e.g. polymorphisms), each with its own valid existence. This clone is substantially in agreement with the reference, but a complete review of all prevailing variants is recommended prior to use. [More info](#)

**OTI Annotation:** This clone was engineered to express the complete ORF with an expression tag. Expression varies depending on the nature of the gene.

**Components:** The ORF clone is ion-exchange column purified and shipped in a 2D barcoded Matrix tube containing 10ug of transfection-ready, dried plasmid DNA (reconstitute with 100 ul of water).

- Reconstitution Method:**
1. Centrifuge at 5,000xg for 5min.
  2. Carefully open the tube and add 100ul of sterile water to dissolve the DNA.
  3. Close the tube and incubate for 10 minutes at room temperature.
  4. Briefly vortex the tube and then do a quick spin (less than 5000xg) to concentrate the liquid at the bottom.
  5. Store the suspended plasmid at -20°C. The DNA is stable for at least one year from date of shipping when stored at -20°C.

**RefSeq:** [NM\\_012456.3](#)

**RefSeq Size:** 684 bp

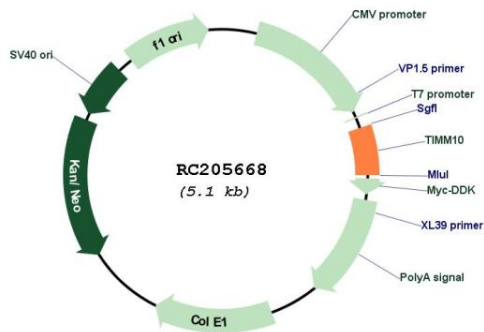
**RefSeq ORF:** 273 bp

**Locus ID:** 26519

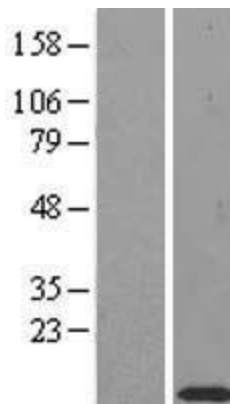
**UniProt ID:** [P62072](#)  
**Cytogenetics:** 11q12.1  
**Domains:** zf-Tim10\_DDP  
**MW:** 10.3 kDa

**Gene Summary:** The mitochondrial protein encoded by this gene belongs to a family of evolutionarily conserved proteins that are organized in heterooligomeric complexes in the mitochondrial intermembrane space. These proteins mediate the import and insertion of hydrophobic membrane proteins into the mitochondrial inner membrane, functioning as intermembrane space chaperones for the highly insoluble carrier proteins. [provided by RefSeq, Nov 2011]

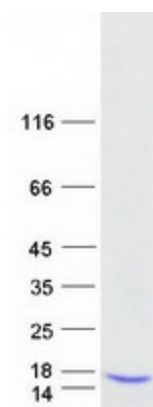
### Product images:



Circular map for RC205668



Western blot validation of overexpression lysate (Cat# [LY415747]) using anti-DDK antibody (Cat# [TA50011-100]). Left: Cell lysates from untransfected HEK293T cells; Right: Cell lysates from HEK293T cells transfected with RC205668 using transfection reagent MegaTran 2.0 (Cat# [TT210002]).



Coomassie blue staining of purified TIMM10 protein (Cat# [TP305668]). The protein was produced from HEK293T cells transfected with TIMM10 cDNA clone (Cat# RC205668) using MegaTran 2.0 (Cat# [TT210002]).