

Product datasheet for **RC205667**

VAM1 (MPP6) (NM_016447) Human Tagged ORF Clone

Product data:

Product Type:	Expression Plasmids
Product Name:	VAM1 (MPP6) (NM_016447) Human Tagged ORF Clone
Tag:	Myc-DDK
Symbol:	VAM1
Synonyms:	p55T; PALS2; VAM-1; VAM1
Mammalian Cell Selection:	Neomycin
Vector:	pCMV6-Entry (PS100001)
E. coli Selection:	Kanamycin (25 ug/mL)



[View online »](#)

ORF Nucleotide Sequence:

>RC205667 ORF sequence
 Red=Cloning site Blue=ORF Green=Tags(s)

TTTTGTAATACGACTCACTATAGGGCGGCCGGAATTCGTCGACTGGATCCGGTACCGAGGAGATCTGCC
 GCC**GCGATCGCC**

ATGCAGCAAGTCTTGAAAACCTTACGGAGCTGCCTCGTCTACTGGAGCAGAAGAAATAGACCTAATTT
 TCCTCAAGGGAATTATGGAGAATCCTATTGTAAAATCACTTGCTAAGGCTCATGAGAGGCTAGAAGATTC
 CAAACTAGAAGCTGTCAGTGACAATAAATTGGAATTAGTCAATGAAATCTTGAAGACATCACTCCTCTA
 ATAAATGTGGATGAAAATGTGGCAGAATTGGTTGGTATACTCAAAGAACCTCACTCCAGTCACTGTTGG
 AGGCCCATGATATTGTGGCATCAAAGTGTATGATTCACCTCCATCAAGCCAGAAATGAATAATTTCTTC
 TATCAATAATCAGTTATTACCAGTAGATGCCATTCGATTTCTGGTATTCACAAAAGAGCTGGGGAACCA
 CTGGGTGTGACATTTAGGGTTGAAAATAATGATCTGGTAATTGCCGAATCCTCCATGGGGGAATGATAG
 ATCGACAAGTCTACTTCATGTGGGAGATATAATTAAGAAGTCAATGGCCATGAGGTTGAAAATAATCC
 AAAGGAATTACAAGAATTACTGAAAAATATTAGTGAAGTGTACCCTAAAAATCTTACCAAGTTATAGA
 GATACCATTACTCCTCAACAGGTATTTGTGAAGTGCATTTTGTATTATAATCCATACAATGACAACCTAA
 TACCTTGCAAAGAAGCAGGATTGAAGTTTTCAAAGGAGAAAATCTTCAGATTGTAATAGAGAAGATCC
 AAATTGGTGGCAGGCTAGCCATGTAAGAGAGGGAGGAAGCGCTGGTCTCATTCCAAGCCAGTTCTGGAA
 GAGAAGAGAAAGGCATTTGTTAGAAGAGACTGGGACAATTCAGGACCTTTTTGTGGAACATAAGTAGCA
 AAAAAAGAAAAGATGATGTATCTCACAACAGAAATGCAGAATTTGATCGTCATGAAATCCAGATATA
 TGAGGAGGTAGCCAAAATGCCTCCCTCCAGAGAAAAACATTAGTATTGATAGGAGCTCAAGGTGTAGGC
 CGAAGAAGCTTGAAAACAGGTTTATAGTATTGAATCCCACTAGATTTGGAACACGGTGCATTTACTT
 CACGGAACCAAGGGAAGATGAAAAGATGGCCAGGCATATAAGTTTGTGTCACGATCTGAGATGGAAGC
 AGATATTAAGCTGGAAGTATTTGGAACATGGGGAATATGAAGGAAATCTCTATGGAACCAAAAATTGAT
 TCTATTCTTGAGTTGTCCAAACTGGACGACTTGCATTCTGGATGTCAACCCACAGCACTGAAAGTAT
 TGAGGACATCAGAGTTTATGCCCTATGTGGTATTTATTGCGGCTCCGGAGCTAGAGACGTTACGTGCCAT
 GCACAAGGCTGTGGTGGATGCAGGAATCACTACCAAGCTTCTGACCGACTCTGACTTGAAGAAAACAGTG
 GATGAAAGTGCACGATTGAGAGAGCATACAACCACTATTTGATTTGATCATATAAATGATAATCTAG
 ACAAGCCTTTGAAAACACTGCAAACTGCCATAGAGAACTGAGAATGGAACACAGTGGTCCCAATCAG
 CTGGGTTTAC

ACGCGTACGCGGCCGCTCGAGCAGAAACTCATCTCAGAAGAGGATCTGGCAGCAAATGATATCCTGGATT
 ACAAGGATGACGACGATAAGGTTTAA

Protein Sequence:

>RC205667 protein sequence
 Red=Cloning site Green=Tags(s)

MQQVLENLTELPSSTGAEEIDLIFLKGIMENPIVKS LAKAHERLEDSKLEAVSDNNLELVNEILEDITPL
 INV DENVAELVGILKEPHFQSLLEAHDIVASKCYDSPSSPEMNNSSINNQLLPVDAIRILGIHKRAGEP
 LGVTRFVENNDLVIARILHGGMIDRQGLLHVGDIIKEVNGHEVGNPKELQELLKNI SGSVTLKILPSYR
 DTITPQQVFKCHFDPYNDNLIPCKEAGLKF SKGEILQIVNREDPNWWQASHVKEGGSAGLIPSQFLE
 EKRFKAFVRRDWDNSGPF CGTIS SKKKKKMMYL TTRNAEFD RHEIQIYEEVAKMPPFQRKTLV LIGA QGVG
 RRSLKNRFIVLNPTRFGTTVPFTSRKPREDEKDGQAYKFVSRSEMEADIKAGKYLEHGEYEGNLYGTKID
 SILEVVQTGRTCILDVNPQALKVLR TSEFMPYVVFIAAPELET LRAMHKAVVDAGITTKLLTDSDLKKT
 DESARIQRAYNHYFDLIIINDNLDAFEK LQTAIEKLRMEPQWVPISWVY

TRTRPLEQKLI SEEDLAANDILDYKDDDDKV

Chromatograms:

https://cdn.origene.com/chromatograms/mk6205_h09.zip

Restriction Sites:

Sgfl-Mlul

Cloning Scheme:

ACCN: NM_016447

ORF Size: 1620 bp

OTI Disclaimer: The molecular sequence of this clone aligns with the gene accession number as a point of reference only. However, individual transcript sequences of the same gene can differ through naturally occurring variations (e.g. polymorphisms), each with its own valid existence. This clone is substantially in agreement with the reference, but a complete review of all prevailing variants is recommended prior to use. [More info](#)

OTI Annotation: This clone was engineered to express the complete ORF with an expression tag. Expression varies depending on the nature of the gene.

Components: The ORF clone is ion-exchange column purified and shipped in a 2D barcoded Matrix tube containing 10ug of transfection-ready, dried plasmid DNA (reconstitute with 100 ul of water).

Reconstitution Method:

1. Centrifuge at 5,000xg for 5min.
2. Carefully open the tube and add 100ul of sterile water to dissolve the DNA.
3. Close the tube and incubate for 10 minutes at room temperature.
4. Briefly vortex the tube and then do a quick spin (less than 5000xg) to concentrate the liquid at the bottom.
5. Store the suspended plasmid at -20°C. The DNA is stable for at least one year from date of shipping when stored at -20°C.

RefSeq: [NM_016447.2](#), [NP_057531.2](#)
RefSeq Size: 2201 bp

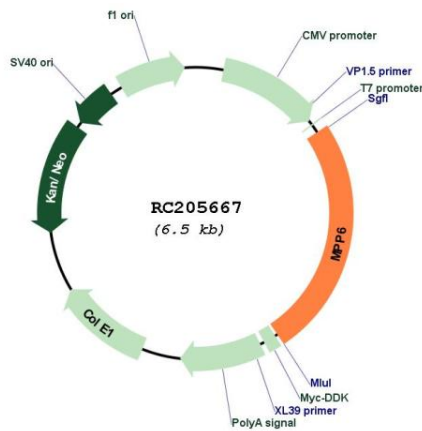
RefSeq ORF: 1623 bp

Locus ID: 51678

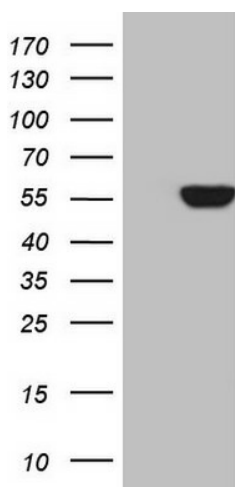
UniProt ID: [Q9NZW5](#)

Cytogenetics:	7p15.3
Domains:	SH3, PDZ, L27, Guanylate_kin, GuKc
Protein Families:	Druggable Genome, Stem cell - Pluripotency
MW:	61.1 kDa
Gene Summary:	Members of the peripheral membrane-associated guanylate kinase (MAGUK) family function in tumor suppression and receptor clustering by forming multiprotein complexes containing distinct sets of transmembrane, cytoskeletal, and cytoplasmic signaling proteins. All MAGUKs contain a PDZ-SH3-GUK core and are divided into 4 subfamilies, DLG-like (see DLG1; MIM 601014), ZO1-like (see TJP1; MIM 601009), p55-like (see MPP1; MIM 305360), and LIN2-like (see CASK; MIM 300172), based on their size and the presence of additional domains. MPP6 is a member of the p55-like MAGUK subfamily (Tseng et al., 2001 [PubMed 11311936]).[supplied by OMIM, Mar 2008]

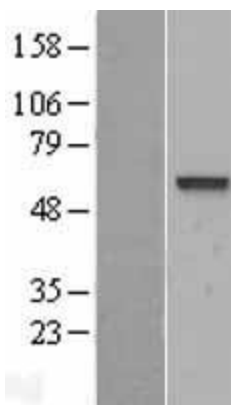
Product images:



Circular map for RC205667



HEK293T cells were transfected with the pCMV6-ENTRY control (Cat# [PS100001], Left lane) or pCMV6-ENTRY MPP6 (Cat# RC205667, Right lane) cDNA for 48 hrs and lysed. Equivalent amounts of cell lysates (5 ug per lane) were separated by SDS-PAGE and immunoblotted with anti-MPP6 (Cat# [TA808227])(1:2000). Positive lysates [LY402551] (100ug) and [LC402551] (20ug) can be purchased separately from OriGene.



Western blot validation of overexpression lysate (Cat# [LY402551]) using anti-DDK antibody (Cat# [TA50011-100]). Left: Cell lysates from untransfected HEK293T cells; Right: Cell lysates from HEK293T cells transfected with RC205667 using transfection reagent MegaTran 2.0 (Cat# [TT210002]).