

## Product datasheet for **RC205665**

### FLVCR2 (NM\_017791) Human Tagged ORF Clone

#### Product data:

Product Type:	Expression Plasmids
Product Name:	FLVCR2 (NM_017791) Human Tagged ORF Clone
Tag:	Myc-DDK
Symbol:	FLVCR2
Synonyms:	C14orf58; CCT; EPV; FLVCRL14q; MFSD7C; PVHH; SLC49A2
Mammalian Cell Selection:	Neomycin
Vector:	pCMV6-Entry (PS100001)
E. coli Selection:	Kanamycin (25 ug/mL)



[View online »](#)

**ORF Nucleotide Sequence:**

>RC205665 ORF sequence  
 Red=Cloning site Blue=ORF Green=Tags(s)

TTTTGTAATACGACTCACTATAGGGCGGCCGGAATTCGTCGACTGGATCCGGTACCGAGGAGATCTGCC  
 GCC**CGGATCGCC**

ATGGTGAATGAAGTCCCAACCAGGAAGAGAGCGATGACACCCCTGTGCCGGAGTCCGACTCCAAGCGG  
 ACCCCAGCGTCTCGGTCCATCCCAGCGTCTCGGTCCATCCCAGCGTCTCCATCAACCCAGCGTCTCTGT  
 CCACCCAGCAGTTCGGCCACCCAGTGCCTTAGCCCAACCCAGTGGCTTGGCTCACCCAGTAGCTCG  
 GGCCCTGAGGACCTCAGCGTGATCAAGGTGAGCAGGCGCCGTTGGGCCGTGGTCTGGTGTTTAGCTGCT  
 ACTCCATGTGCAACTCCTTTAGTGGATCCAGTACGGCTCCATCAATAACATCTTCATGCACTTCTACGG  
 TGTCACTGCTTTGCCATTGACTGGCTGTCCATGTGCTACATGCTGACTTACATCCCTCTGCTCTGCCA  
 GTGGCTTGGCTGTGGAGAAGTTCGGCCTGCGCACCATTGCTCTCACTGGCTCGGCTCTCAACTGCCTGG  
 GGGCTGGGTGAAGCTGGGCAGCCTGAAGCCGCATCTCTTCCGGTACCCTGGTGGGCCAGCTCATCTG  
 CTCTGTGGCCAGGTTTTATCCTGGGCATGCCCTCCCGCATCGCTTCCGTCTGGTTCGGGGCTAATGAG  
 GTTCAACAGCCTGCTCCGTGGCTGTCTTGGCAATCAGCTTGAATTGGGATTGGGTTCTTGGTCCCTC  
 CTGTTTTGGTACCAACATTGAAGACCGGGACGAGCTTGCTACACATCAGCATCATGTTCTATATAAT  
 AGGAGGTGTGGCACTCTCCTCCTCATCTTGTCACTATTGTGTTCAAGGAGAAACCTAAATATCCCCC  
 AGCAGGGCCCAATCCCTGAGCTATGCCTTGACCTCTCCTGATGCCTCATACTTAGGTTCCATCGCCGGC  
 TCTTCAAAAATCTCAACTTTGTGCTGCTGTGATCACCTATGGTCTGAATGCTGGTGTCTTTTATGCCTT  
 GTCCACTCTTCTGAATCGCATGGTATCTGGCACTACCCGGGGGAAGAAGTGAATGCTGGAAGAATTGGC  
 CTGACGATCGTCATTGCAGGAATGCTTGGGGCTGTGATCTCAGGAATCTGGCTGGATAGGTCCAAAACCT  
 ACAAAGAGACAACCTGGTAGTCTATATCATGCACTGGTGGGCATGGTGGTGTACACGTTACCTTGAA  
 CCTGGGACACCTGTGGTAGTGTTCATCACTGCTGGCACAAATGGGCTTCTTTATGACTGGCTATCTCCA  
 CTGGGATTTGAGTTGCTGTGGAGCTACGTACCCAGAATCAGAAGGCATCTCCTCCGGCCTCCTCAACA  
 TATCTGCACAGGTATTTGGGATCATCTTACCATCTCCAGGGCCAGATTATTGACAACATGGAACCAA  
 GCCTGGGAACATCTCCTGTGTGTCTTACTCTTGGAGCAGCCCTCACTGCATTATTAAGGCAGAT  
 CTCCGGAGACAGAAAGCAAACAAGAACTCTTGAGAACAACCTCAAGAGGAGGAGGAGAGCAACA  
 CCAGCAAAGTGCCACTGCTGTGCAGAGGATCATCTC

**ACGCGT**ACGCGGCCGCTCGAGCAGAAACTCATCTCAGAAGAGGATCTGGCAGCAAATGATATCTGGATT  
 ACAAGGATGACGACGATAAGGTTTAA

**Protein Sequence:**

>RC205665 protein sequence  
 Red=Cloning site Green=Tags(s)

MVNEGPNQEEEDDTPVPESALQADPSVSVHPSVSVHPSVSVINPSVSVHPSSSAHPSALAQPGLAHPSSS  
 GPEDLSVIKVSRRRWAIVLWFSCYSMNSFQWIQYGSINNI FMHFYGVSAFAIDWLSMCYMLTYIPLLLP  
 VAWLLEKFLRRTIALTGSALNCLGAWVKLGSLKPHLFPVTVVQGLICVAQVILGMPSTRIASVWFGANE  
 VSTACSVAVFGNQLGIAIGFLVPPVLVPIEDRDELAYHISIMFYIIGGVATLLLILVIIVFKEPKYPP  
 SRAQSLSYALTSPDASYLGSIAARLFKNLNFVLLVITYGLNAGAFYALSTLLNRMVIWHYPGEEVNAGRIG  
 LTIVIAGMLGAVISGIWLDRSKYKETTLLVYIMTLVGMVYVFTLNLGHLWVFIITAGTMGFFMTGYLP  
 LGFEFAVELTYPESEGISSGLLNISAQVFGIIFTISQGIIDNYGKPGNIFLCVFLTLGAALTAFIKAD  
 LRRQKANKETLENKLQEEEEESNTSKVPTAVSEDL

**TRTRPLEQKLI**SEEDLAANDILDYKDDDDKV

**Chromatograms:**

[https://cdn.origene.com/chromatograms/mk6673\\_g11.zip](https://cdn.origene.com/chromatograms/mk6673_g11.zip)

**Restriction Sites:**

Sgfl-MluI

**Cloning Scheme:**


**ACCN:** NM\_017791

**ORF Size:** 1578 bp

**OTI Disclaimer:** The molecular sequence of this clone aligns with the gene accession number as a point of reference only. However, individual transcript sequences of the same gene can differ through naturally occurring variations (e.g. polymorphisms), each with its own valid existence. This clone is substantially in agreement with the reference, but a complete review of all prevailing variants is recommended prior to use. [More info](#)

**OTI Annotation:** This clone was engineered to express the complete ORF with an expression tag. Expression varies depending on the nature of the gene.

**Components:** The ORF clone is ion-exchange column purified and shipped in a 2D barcoded Matrix tube containing 10ug of transfection-ready, dried plasmid DNA (reconstitute with 100 ul of water).

- Reconstitution Method:**
1. Centrifuge at 5,000xg for 5min.
  2. Carefully open the tube and add 100ul of sterile water to dissolve the DNA.
  3. Close the tube and incubate for 10 minutes at room temperature.
  4. Briefly vortex the tube and then do a quick spin (less than 5000xg) to concentrate the liquid at the bottom.
  5. Store the suspended plasmid at -20°C. The DNA is stable for at least one year from date of shipping when stored at -20°C.

**RefSeq:** [NM\\_017791.3](#)

**RefSeq Size:** 3669 bp

**RefSeq ORF:** 1581 bp

**Locus ID:** 55640

**UniProt ID:** [Q9UPI3](#)

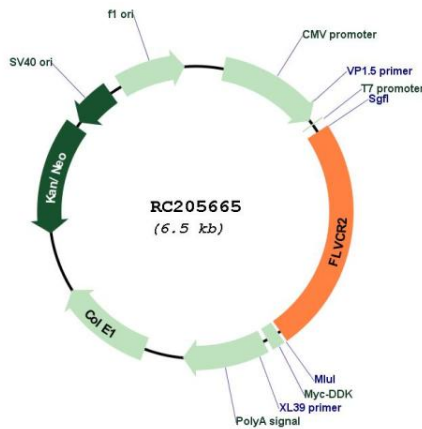
**Cytogenetics:** 14q24.3

**Protein Families:** Transmembrane

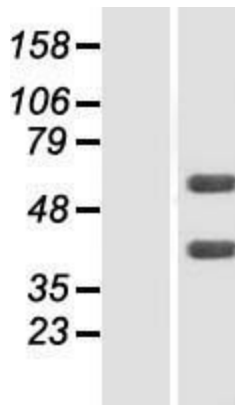
**MW:** 57.2 kDa

**Gene Summary:** This gene encodes a member of the major facilitator superfamily. The encoded transmembrane protein is a calcium transporter. Unlike the related protein feline leukemia virus subgroup C receptor 1, the protein encoded by this locus does not bind to feline leukemia virus subgroup C envelope protein. The encoded protein may play a role in development of brain vascular endothelial cells, as mutations at this locus have been associated with proliferative vasculopathy and hydranencephaly-hydrocephaly syndrome. Alternatively spliced transcript variants have been described.[provided by RefSeq, Aug 2010]

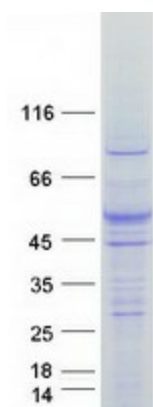
**Product images:**



Circular map for RC205665



Western blot validation of overexpression lysate (Cat# [LY413533]) using anti-DDK antibody (Cat# [TA50011-100]). Left: Cell lysates from untransfected HEK293T cells; Right: Cell lysates from HEK293T cells transfected with RC205665 using transfection reagent MegaTran 2.0 (Cat# [TT210002]).



Coomassie blue staining of purified FLVCR2 protein (Cat# [TP305665]). The protein was produced from HEK293T cells transfected with FLVCR2 cDNA clone (Cat# RC205665) using MegaTran 2.0 (Cat# [TT210002]).