

Product datasheet for **RC205664**

C20orf11 (GID8) (NM_017896) Human Tagged ORF Clone

Product data:

Product Type:	Expression Plasmids
Product Name:	C20orf11 (GID8) (NM_017896) Human Tagged ORF Clone
Tag:	Myc-DDK
Symbol:	C20orf11
Synonyms:	C20orf11; TWA1
Mammalian Cell Selection:	Neomycin
Vector:	pCMV6-Entry (PS100001)
E. coli Selection:	Kanamycin (25 ug/mL)
ORF Nucleotide Sequence:	>RC205664 ORF sequence Red=Cloning site Blue=ORF Green=Tags(s)

TTTTGTAATACGACTCACTATAGGGCGCCGGGAATTCGTCGACTGGATCCGGTACCGAGGAGATCTGCC
GCC**CGATCGCC**

ATGAGTTATGCAGAAAAACCCGATGAAATCACGAAAGATGAGTGGATGGAAAAGCTCAATAACTTGCATG
TCCAGAGAGCAGACATGAACCGCCTCATCATGAACTACCTGGTCACAGAGGGCTTAAAGGAAGCAGCGGA
GAAGTTTCGAATGGAATCTGGAATCGAACCTAGTTTGGATCTGGAACACTTGATGAACGAATCAAGATC
CGGGAGATGATACTGAAAGGTCAGATTCAGGAGCCATCGCCTTGATCAACAGCCTCCACCCAGAGCTCT
TGGACACAAACCGGTATCTTTACTTCCATTTGCAGCAACAGCATTGATCGAGCTGATCCGCCAGCGGGA
GACAGAGGCGGCCTGGAGTTTGCACAGACTCAGCTGGCGGAGCAGGGCGAGGAGAGCCGAGAGTGCCTC
ACAGAGATGGAGCGTACCTGGCACTGCTGGCCTTTGACAGTCCCAGGAGTCCGCTTCGGAGACCTCC
TCCACACCATGCAGAGGCAGAAGGTGTGGAGTGAAGTTAACCAAGCTGTGCTAGATTATGAAAATCGCGA
GTCAACACCCAACTGGCAAAATTAAGTAACTACTACTTTGGGCTCAGAACGAGCTGGACCAGAAGAAA
GTAAAATATCCAAAATGACAGACCTCAGCAAGGGTGTGATTGAGGAGCCCAAG

ACGCGTACGCGGCGCTCGAGCAGAACTCATCTCAGAAGAGGATCTGGCAGCAATGATATCCTGGATT
ACAAGGATGACGACGATAAGGTTTAA



[View online »](#)

Protein Sequence: >RC205664 protein sequence
Red=Cloning site Green=Tags(s)

MSYAEKPDEITKDEWMEKLNHLVQRADMNRLIMNYLVTEGFKEAAEKFRMESGIEPSLDLETLDERIKI
 REMILKGGIQEAIALINSLHPELLDTNRYLYFHLQQQHLIELIRQRETEAALEFAQTQLAEQGEESRECL
 TEMERTLALLAFDSPEESPFGLLLHTMQRQKVWSEVNQAVLDYENRESTPKLAKLLKLLWAQNELDQKK
 VKYPKMTDLSKGVIEEPK

TRTRPLEQKLISEEDLAANDILDYKDDDDKV

Chromatograms: https://cdn.origene.com/chromatograms/mk6427_f01.zip

Restriction Sites: SgfI-MluI

Cloning Scheme:



ACCN: NM_017896

ORF Size: 684 bp

OTI Disclaimer: The molecular sequence of this clone aligns with the gene accession number as a point of reference only. However, individual transcript sequences of the same gene can differ through naturally occurring variations (e.g. polymorphisms), each with its own valid existence. This clone is substantially in agreement with the reference, but a complete review of all prevailing variants is recommended prior to use. [More info](#)

OTI Annotation: This clone was engineered to express the complete ORF with an expression tag. Expression varies depending on the nature of the gene.

Components: The ORF clone is ion-exchange column purified and shipped in a 2D barcoded Matrix tube containing 10ug of transfection-ready, dried plasmid DNA (reconstitute with 100 ul of water).

Reconstitution Method:

1. Centrifuge at 5,000xg for 5min.
2. Carefully open the tube and add 100ul of sterile water to dissolve the DNA.
3. Close the tube and incubate for 10 minutes at room temperature.
4. Briefly vortex the tube and then do a quick spin (less than 5000xg) to concentrate the liquid at the bottom.
5. Store the suspended plasmid at -20°C. The DNA is stable for at least one year from date of shipping when stored at -20°C.

RefSeq: [NM_017896.3](#)

RefSeq Size: 4440 bp

RefSeq ORF: 687 bp

Locus ID: 54994

UniProt ID: [Q9NWU2](#)

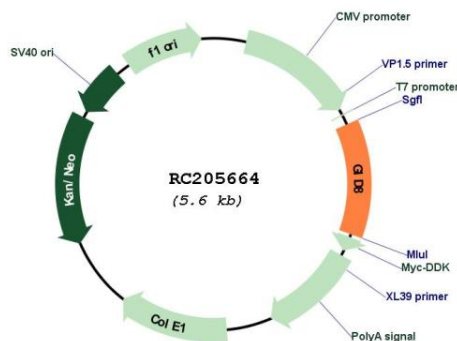
Cytogenetics: 20q13.33

Domains: LisH, CTLH

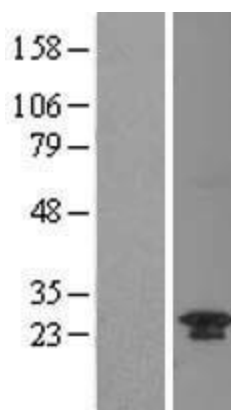
MW: 26.8 kDa

Gene Summary: Core component of the CTLH E3 ubiquitin-protein ligase complex that selectively accepts ubiquitin from UBE2H and mediates ubiquitination and subsequent proteasomal degradation of the transcription factor HBP1 (PubMed:29911972). Acts as a positive regulator of Wnt signaling pathway by promoting beta-catenin (CTNNB1) nuclear accumulation (PubMed:28829046).[UniProtKB/Swiss-Prot Function]

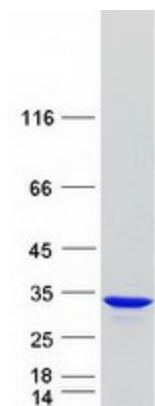
Product images:



Circular map for RC205664



Western blot validation of overexpression lysate (Cat# [LY413478]) using anti-DDK antibody (Cat# [TA50011-100]). Left: Cell lysates from untransfected HEK293T cells; Right: Cell lysates from HEK293T cells transfected with RC205664 using transfection reagent MegaTran 2.0 (Cat# [TT210002]).



Coomassie blue staining of purified GID8 protein (Cat# [TP305664]). The protein was produced from HEK293T cells transfected with GID8 cDNA clone (Cat# RC205664) using MegaTran 2.0 (Cat# [TT210002]).