

## Product datasheet for **RC205663**

### GTPBP5 (MTG2) (NM\_015666) Human Tagged ORF Clone

#### Product data:

Product Type:	Expression Plasmids
Product Name:	GTPBP5 (MTG2) (NM_015666) Human Tagged ORF Clone
Tag:	Myc-DDK
Symbol:	GTPBP5
Synonyms:	dj1005F21.2; GTPBP5; ObgH1
Mammalian Cell Selection:	Neomycin
Vector:	pCMV6-Entry (PS100001)
E. coli Selection:	Kanamycin (25 ug/mL)
ORF Nucleotide Sequence:	>RC205663 ORF sequence Red=Cloning site Blue=ORF Green=Tags(s)

TTTTGTAATACGACTCACTATAGGGCGGCCGGAATTCGTCGACTGGATCCGGTACCGAGGAGATCTGCC  
GCC**CGATCGCC**

ATGGCACCTGCAAGGTGTTTTTCAGCAAGATTGAGGACCGTGTTTCAGGGCGTGGGGCATTGGGCTTTGT  
CCACATGGGCTGGCCTGAAGCCCAGCCGGCTACTGCCACAGCGGGCTTCTCCAGGCTGCTCTCGGTCGG  
CCGTGCGGACCTCGCAAGCATCAGGAACCCCGGGAAGAAGCTGCTCTGAGAAAAAGCTGAAAAGG  
TACTTTGTGGACTATCGGAGAGTGCTTGTCTGTGGAGAAACGGAGGCGTGGGGCAAGCTGCTCCACA  
GTGAGCCCGCAAGGAGTTTGGAGGCCCTGATGGAGGGGACGGAGCAACGGTGGACACGTCATTCTGAG  
AGTTGACCAGCAAGTCAAGTCCCTGTCGTCGGTCTGTCGCGGTACCAGGTTTCAAGTGGAGAAGATGGA  
GGGAGTAAAAACTGCTTCGGGCGCAGTGGCGCCGTCCTCTACATCCGGTCCCGTGGGCACGCTGGTGA  
AGGAGGGAGGCAGAGTTGTGGCCGACCTGTCTTGCCTGGGAGATGAGTACATTGCCGCGCTGGGCGGGC  
AGGAGGGAAAGGCAACCGCTTCTTCTGGCCAACAACAACCGTGGCCCTGTGACCTGTACCCCTGGACAG  
CCAGGACAGCAGCGAGTTCTCCACCTGGAGCTCAAGACGGTGGCCACGCGGAAATGGTGGGATCCCCA  
ACGCCGGAAATCCTCACTGCTCCGGGCCATTTCAAACGCCAGACCCCGCTGGCTTCTACCCGTTAC  
CACCCTGAAGCCCCACGTCGGGATCGTCCACTACGAAGGCCACCTACAAATAGCAGTGGCCGACATCCCC  
GGCATCATACGAGGCCCCACCAGAAGGGGTCTGGGGTCCGCTTCTCAGGCACATCGAGCGCTGCC  
GCTTTCTTGTTCGTGGTGGATTTTCTCAGCCTGAGCCGTGGACTCAAGTTGACGATTTAAAATATGA  
ACTGGAGATGTATGAAAAGGGCCTGTCTGCGAGGCCCCACGCAATCGTCGCAAACAAGATTGACCTCCCT  
GAAGCCCAAGCCAATCTGTCCCAGCTCCGGGATCACTTGGGACAGGAGGTGATCGTGTGCTGTGCGGTTGA  
CCGGCGAGAACCTGGAGCAGCTGCTGTTGCACCTGAAGGTGCTGTATGACGCTACGCGGAGGCCGAGCT  
GGGCCAGGGCCGACCGCTCAGGTGG

**ACGCGT**ACGCGGCCGCTCGAGCAGAAACTCATCTCAGAAGAGGATCTGGCAGCAAATGATATCTGGATT  
ACAAGGATGACGACGATAAGGTTTAA





**Reconstitution Method:**

1. Centrifuge at 5,000xg for 5min.
2. Carefully open the tube and add 100ul of sterile water to dissolve the DNA.
3. Close the tube and incubate for 10 minutes at room temperature.
4. Briefly vortex the tube and then do a quick spin (less than 5000xg) to concentrate the liquid at the bottom.
5. Store the suspended plasmid at -20°C. The DNA is stable for at least one year from date of shipping when stored at -20°C.

**RefSeq:** [NM\\_015666.1](#)

**RefSeq Size:** 2949 bp

**RefSeq ORF:** 1221 bp

**Locus ID:** 26164

**UniProt ID:** [Q9H4K7](#)

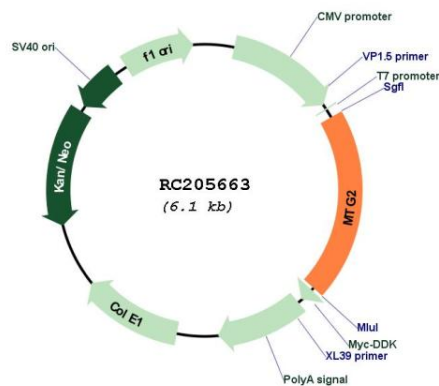
**Cytogenetics:** 20q13.33

**Domains:** GTP1\_OBG

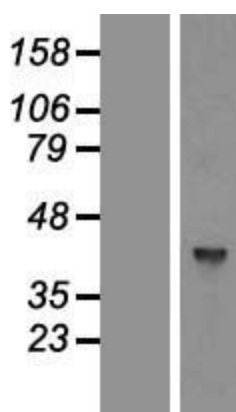
**MW:** 44 kDa

**Gene Summary:** Small G proteins, such as GTPBP5, act as molecular switches that play crucial roles in the regulation of fundamental cellular processes such as protein synthesis, nuclear transport, membrane trafficking, and signal transduction (Hirano et al., 2006 [PubMed 17054726]). [supplied by OMIM, Mar 2008]

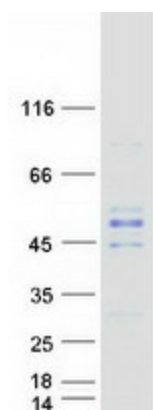
### Product images:



Circular map for RC205663



Western blot validation of overexpression lysate (Cat# [LY414355]) using anti-DDK antibody (Cat# [TA50011-100]). Left: Cell lysates from untransfected HEK293T cells; Right: Cell lysates from HEK293T cells transfected with RC205663 using transfection reagent MegaTran 2.0 (Cat# [TT210002]).



Coomassie blue staining of purified MTG2 protein (Cat# [TP305663]). The protein was produced from HEK293T cells transfected with MTG2 cDNA clone (Cat# RC205663) using MegaTran 2.0 (Cat# [TT210002]).