

Product datasheet for **RC205653**

C1QA (NM_015991) Human Tagged ORF Clone

Product data:

Product Type:	Expression Plasmids
Product Name:	C1QA (NM_015991) Human Tagged ORF Clone
Tag:	Myc-DDK
Symbol:	C1QA
Mammalian Cell Selection:	Neomycin
Vector:	pCMV6-Entry (PS100001)
E. coli Selection:	Kanamycin (25 ug/mL)
ORF Nucleotide Sequence:	>RC205653 ORF sequence Red=Cloning site Blue=ORF Green=Tags(s)

TTTTGTAATACGACTCACTATAGGGCGGCCGGAATTCGTCGACTGGATCCGGTACCGAGGAGATCTGCC
GCC**CGATCGCC**

ATGGAGGGTCCCCGGGGATGGCTGGTGCTCTGTGTGCTGGCCATATCGCTGGCCTCTATGGTGACCGAGG
ACTTGTGCCGAGCACCAGACGGGAAGAAAGGGGAGGCAGGAAGACCTGGCAGACGGGGCGGCCAGGCCT
CAAGGGGGAGCAAGGGGAGCCGGGGCCCTGGCATCCGACAGGCATCCAAGGCCTTAAGGAGACCAG
GGGGAACCTGGCCCTCTGAAACCCCGCAAGGTGGGCTACCCAGGGCCAGCGCCCTCGGGGCC
GTGGCATCCCGGAATTAAGGCACCAAGGCCAGCCAGGAAACATCAAGGACCAGCCAGGCCAGCCTT
CTCCGCCATTCGGCGGAACCCCAATGGGGGCAACGTGGTTCATCTTCGACACGGTCATCACCAACCAG
GAAGAACCCTACCAAGCACTCCGGCCGATTCGTCTGCACTGTACCCGGCTACTACTTTCACCTTCC
AGGTGCTGTCCAGTGGGAAATCTGCCTGTCCATCGTCTCCTCAAGGGCCAGGTCCGACGCTCCCT
GGGCTTCTGTGACACCACCAACAAGGGCTCTTCCAGGTGGTGTGAGGGGCATGGTGCTTCAGCTGCAG
CAGGGTGACCAGGTCTGGGTTGAAAAGACCCCAAAAAGGGTACATTTACCAGGGCTCTGAGGCCGACA
GCGTCTTCAGCGGCTTCCATCTCCATCTGCC

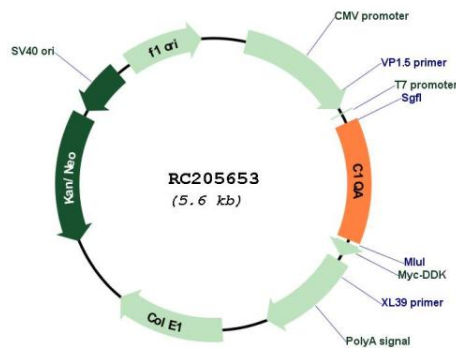
ACGCGTACGCGGCCGCTCGAGCAGAACTCATCTCAGAAGAGGATCTGGCAGCAAATGATATCCTGGATT
ACAAGGATGACGACGATAAGGTTTAA



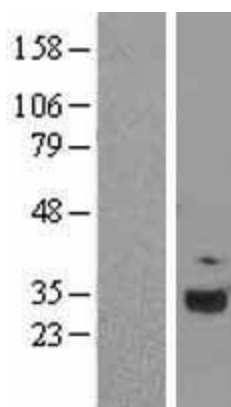
[View online »](#)

Reconstitution Method:	<ol style="list-style-type: none">1. Centrifuge at 5,000xg for 5min.2. Carefully open the tube and add 100ul of sterile water to dissolve the DNA.3. Close the tube and incubate for 10 minutes at room temperature.4. Briefly vortex the tube and then do a quick spin (less than 5000xg) to concentrate the liquid at the bottom.5. Store the suspended plasmid at -20°C. The DNA is stable for at least one year from date of shipping when stored at -20°C.
RefSeq:	NM_015991.1 , NP_057075.1
RefSeq Size:	1098 bp
RefSeq ORF:	738 bp
Locus ID:	712
UniProt ID:	P02745
Cytogenetics:	1p36.12
Domains:	C1Q, Collagen
Protein Families:	Secreted Protein
Protein Pathways:	Complement and coagulation cascades, Prion diseases, Systemic lupus erythematosus
MW:	26 kDa
Gene Summary:	This gene encodes the A-chain polypeptide of serum complement subcomponent C1q, which associates with C1r and C1s to yield the first component of the serum complement system. C1q deficiency is associated with lupus erythematosus and glomerulonephritis. C1q is composed of 18 polypeptide chains which include 6 A-chains, 6 B-chains, and 6 C-chains. Each chain contains an N-terminal collagen-like region and a C-terminal C1q globular domain. Alternate splicing results in multiple transcript variants. [provided by RefSeq, Nov 2016]

Product images:



Circular map for RC205653



Western blot validation of overexpression lysate (Cat# [LY414262]) using anti-DDK antibody (Cat# [TA50011-100]). Left: Cell lysates from untransfected HEK293T cells; Right: Cell lysates from HEK293T cells transfected with RC205653 using transfection reagent MegaTran 2.0 (Cat# [TT210002]).