

Product datasheet for **RC205652**

RPL26L1 (NM_016093) Human Tagged ORF Clone

Product data:

Product Type: Expression Plasmids
Product Name: RPL26L1 (NM_016093) Human Tagged ORF Clone
Tag: Myc-DDK
Symbol: RPL26L1
Synonyms: RPL26P1
Mammalian Cell Selection: Neomycin
Vector: pCMV6-Entry (PS100001)
E. coli Selection: Kanamycin (25 ug/mL)
ORF Nucleotide Sequence: >RC205652 ORF sequence
Red=Cloning site Blue=ORF Green=Tags(s)

TTTTGTAATACGACTCACTATAGGGCGGCCGGAATTCGTCGACTGGATCCGGTACCGAGGAGATCTGCC
GCC**CGGATCGCC**

ATGAAGTTCAATCCCTTCGTTACCTCGGACCGCAGTAAAAACCGCAAACGTCACTTCAATGCCCCCTCAC
ACGTGCGCAGGAAGATCATGTATCCCCGCTCTCCAAGGAGCTGCGGCAGAAGTACAATGTCCGCTCCAT
GCCCATCCGCAAGGACGACGAGGTCCAGGTAGTTCGAGGACACTACAAGGTGAGCAAAATGGCAAGGTA
GTCCAGGTGTACAGAAAGAAATATGTCTATCATCGAGCGGGTGCAGCGTGAGAAGGCCAACGGCACAA
CTGTCCACGTGGGCATTCACCCAAGCAAGGTGGTTATCACCAGGCTAAAAGTGGACAAGGATCGGAAAAA
AATTCTTGAACGCAAAGCCAAGTCTCGACAAGTTGAAAAAGAGAAAGGCAATATAAAGAAGAAGTATT
GAGAAAATGCAGGAA

ACGCGTACGCGGCCGCTCGAGCAGAACTCATCTCAGAAGAGGATCTGGCAGCAAATGATATCCTGGATT
ACAAGGATGACGACGATAAGGTTTAA

Protein Sequence: >RC205652 protein sequence
Red=Cloning site Green=Tags(s)

MKFNPFVTSDRSKNRKRHFNAPSHVRRKIMSSPLSKELRQKYNVRSMPIRKDDEVQVVRGHYKQQIGKV
VQVYRKYVYIYIERVQREKANGTTVHVGIHPSKVITRLKLDKDRKKILERKAKSRQVQVKEKGKYKEELI
EKMQE

TRTRPLEQKLISEEDLAANDILDYKDDDDKV

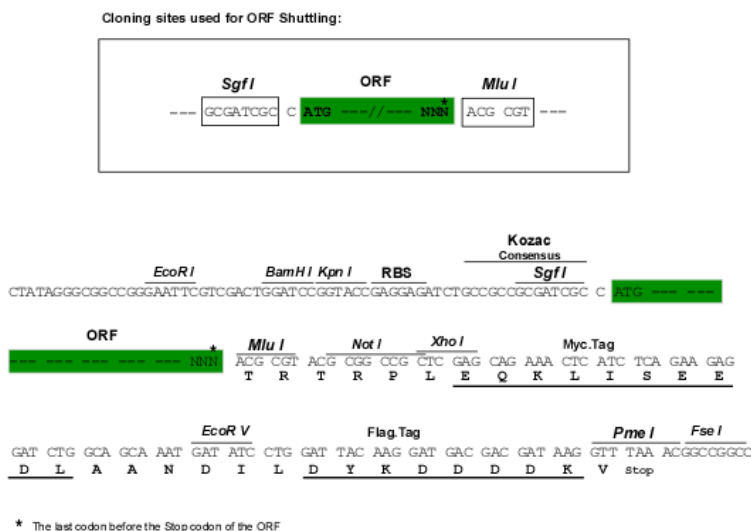
Chromatograms: https://cdn.origene.com/chromatograms/mk6420_g08.zip



[View online >](#)

Restriction Sites: SgfI-MluI

Cloning Scheme:



ACCN: NM_016093

ORF Size: 435 bp

OTI Disclaimer: The molecular sequence of this clone aligns with the gene accession number as a point of reference only. However, individual transcript sequences of the same gene can differ through naturally occurring variations (e.g. polymorphisms), each with its own valid existence. This clone is substantially in agreement with the reference, but a complete review of all prevailing variants is recommended prior to use. [More info](#)

OTI Annotation: This clone was engineered to express the complete ORF with an expression tag. Expression varies depending on the nature of the gene.

Components: The ORF clone is ion-exchange column purified and shipped in a 2D barcoded Matrix tube containing 10ug of transfection-ready, dried plasmid DNA (reconstitute with 100 ul of water).

Reconstitution Method:

1. Centrifuge at 5,000xg for 5min.
2. Carefully open the tube and add 100ul of sterile water to dissolve the DNA.
3. Close the tube and incubate for 10 minutes at room temperature.
4. Briefly vortex the tube and then do a quick spin (less than 5000xg) to concentrate the liquid at the bottom.
5. Store the suspended plasmid at -20°C. The DNA is stable for at least one year from date of shipping when stored at -20°C.

Note: Plasmids are not sterile. For experiments where strict sterility is required, filtration with 0.22um filter is required.

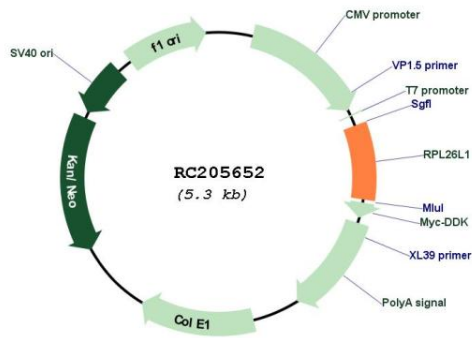
RefSeq: [NM_016093.4](#)

RefSeq Size: 723 bp

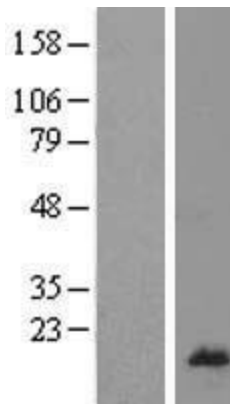
RefSeq ORF: 438 bp

Locus ID: 51121
UniProt ID: [Q9UNX3](#)
Cytogenetics: 5q35.1
Domains: KOW, KOW
Protein Pathways: Ribosome
MW: 17.3 kDa
Gene Summary: This gene encodes a protein that shares high sequence similarity with ribosomal protein L26. Alternative splicing results in multiple transcript variants encoding the same protein. [provided by RefSeq, Dec 2015]

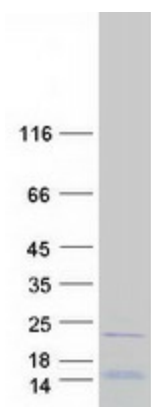
Product images:



Circular map for RC205652



Western blot validation of overexpression lysate (Cat# [LY414197]) using anti-DDK antibody (Cat# [TA50011-100]). Left: Cell lysates from untransfected HEK293T cells; Right: Cell lysates from HEK293T cells transfected with RC205652 using transfection reagent MegaTran 2.0 (Cat# [TT210002]).



Coomassie blue staining of purified RPL26L1 protein (Cat# [TP305652]). The protein was produced from HEK293T cells transfected with RPL26L1 cDNA clone (Cat# RC205652) using MegaTran 2.0 (Cat# [TT210002]).