

Product datasheet for **RC205648**

SP110 (NM_004510) Human Tagged ORF Clone

Product data:

Product Type:	Expression Plasmids
Product Name:	SP110 (NM_004510) Human Tagged ORF Clone
Tag:	Myc-DDK
Symbol:	SP110
Synonyms:	IFI41; IFI75; IPR1; VODI
Mammalian Cell Selection:	Neomycin
Vector:	pCMV6-Entry (PS100001)
E. coli Selection:	Kanamycin (25 ug/mL)



[View online »](#)

ORF Nucleotide Sequence:

>RC205648 ORF sequence
 Red=Cloning site Blue=ORF Green=Tags(s)

TTTTGTAATACGACTCACTATAGGGCGGCCGGAATTCGTCGACTGGATCCGGTACCGAGGAGATCTGCC
 GCC**GCGATCGCC**

ATGTTCCACCATGACAAGACCATGGAAGAGGCTCTTTTTCAGCACTTCATGCACCAGAAGCTGGGGATCG
 CCTATGCCATACACAAGCCATTTCCCTTTTGAAGGCCTCTAGACAACCTCCATCATCACTAAGAGAAT
 GTACATGGAATCTCTGGAAGCCTGTAGAAATTTGATCCCTGTATCCAGAGTGGTGACAACATTCTCACC
 CAACTGGAGAGGACTTTTAACTGTCTCTCTGGTGACATTGTTCAAGTCAAATTAACCTGCGTGAATATC
 CCAATCTGGTGACGATTTACAGAAGCTTCAAACGTGTTGGTGCTTCTATGAACGGCAGAGCAGAGACAC
 ACCAATCTACTTGAAGCCCACTGGCCTAGCAGAAGGAAGCTCCCTCCATACCCCACTGGCGTGCC
 CCACCACAACCCCTCAACCAAGCTGTTACCCTGTGCGCAAGAGTCAGTGAGCCTGGAACATCTCC
 AGCAAAGCGATGAGATCCTGAGTGAGTCGCCAGCCCATCTGACCCTGTCCTGCCTCTCCCTGCACTCAT
 CCAGGAAGGAAGAAGCACTTCAGTGACCAATGACAAGTTAACATCCAAAATGAATGCGGAAGAAGACTCA
 GAAGAGATGCCAGCCTCCTCACTAGCACTGTGCAAGTGCCAGTGAACAACCTGATCCCCAAAATAAGAG
 ATAAAGAAGACCCTCAAGAGATGCCCACTCTCCCTTGGGCTCTATGCCAGAGATAAGAGATAATTTCC
 AGAACCAATGACCCAGAAGAGCCCAAGGAGGTGTCCAGCACACCTTCAGACAAGAAAGGAAAGAAAAGA
 AAAAGATGTATCTGGTCAACTCCAAAAGGAGACATAAGAAAAAAGCCTCCCAAGAGCCTTATCTAGAC
 ACGGAATCCAAAAGAAGCTCAAAGGGTGGATCAGGTTCTCAAAGAAAGATGACTCAACTTGTAACTC
 CACGGTAGAGACAAGGGCCAAAAGGCGAGAAGTGAATGTGCCGAAAGTCGAGATCAGAGGAGATCATT
 GATGGCACTTCAGAAATGAATGAAGGAAAGAGGTCAGAGAGCCTAGTACACCACGAAGGGTACAC
 AAGGGGACGCTCACCTGGGCATGGCATCCAAGAGAAGCTCCAAGTGGTGGATAAGGTGACTCAAAGGAA
 AGACACTCAACCTGGAAGTCAAGAGTCAAGAGGTCATGATGAGGGTCCAAAAGGCAAGAAGTAAATGTGCCGAAAG
 TCCAGATCGAAAGAAAAGAAAAGGAGAAAAGATATCTGTTCAAGCTCAAAGGAGATTTAGAAAAATA
 TTCACCGAAGAGGAAAACCCAAAAGTGAAGTGTGGATTTTCACTGTTCTAAGCTCCCGTGACCTGTGG
 TGAGGGCAAAGGGATTTTATATAAGAAGAAAATGAAACACGGATCCTCAGTGAAGTGCATTCGGAATGAG
 GATGGAAGTGGTTAACACCAAATGAATTTGAAGTGAAGGAAAAGGAAGGAAACGAAAGAACTGGAAC
 GGAATATACGTTGTGAAGGAATGACCCTAGGAGAGCTGCTGAAGAGTGGACTTTTGTCTGTCTCCAAG
 AATAAATCTCAAGAGAGAGTTAAATAGCAAG

ACGCGTACGCGGCCGCTCGAGCAGAAACTCATCTCAGAAGAGGATCTGGCAGCAAATGATATCCTGGATT
 ACAAGGATGACGACGATAAGGTTTAA

Protein Sequence:

>RC205648 protein sequence
 Red=Cloning site Green=Tags(s)

MFTMTRAMEEALFQHFHQKLGIAIYAIHKPFPFFEGLLDNSIITKRMYESLEACRNLIPVSRVHNILT
 QLERTFNL SLLVTLFSQINLREYPNLVTIYRSFKRVGASYSRQSRDTPILLEAPTGLAEGSSLHTPLALP
 PPQPPQSPSCAPRVSEPGTSSQQSDEILSESPSPDPVLPALIQEGRSTSVTNDKLT SKMNAEEDS
 EEMPSLLTSTVQVADNLI PQIRDKEDPQEMPHSPLGSMPEIRDNSPEPNDPEEPQEVSTP SDKKGKKR
 KRCIWSTPKRRHKKKSLPRALSRHGIQKLRVDQVPQKDDSTCNSTVETRAQKARTECARKSRSEEII
 DGTSEMNEGKRSQKTPSTPRRVQTGAASPGHGIQEKLVVDKVTQRKDDSTWNSEVMRQKARTKARK
 SRSKEKKKEKDICSSSKRRFQKNIHRRGPKSDTVDFHCSKLPVTCGEAKGILYKKMKHGS SVK CIRNE
 DGTWLT PNEFEVEGKGRNAKNWRNIRCEGMLGELLKSGLLLCPPRINLKRELNSK

TRTRPLEQKLI SEEDLAANDILDYKDDDDKV

Chromatograms:

https://cdn.origene.com/chromatograms/mk6238_h08.zip

Restriction Sites:

Sgfl-MluI

Cloning Scheme:


ACCN: NM_004510

ORF Size: 4632 bp

OTI Disclaimer: The molecular sequence of this clone aligns with the gene accession number as a point of reference only. However, individual transcript sequences of the same gene can differ through naturally occurring variations (e.g. polymorphisms), each with its own valid existence. This clone is substantially in agreement with the reference, but a complete review of all prevailing variants is recommended prior to use. [More info](#)

OTI Annotation: This clone was engineered to express the complete ORF with an expression tag. Expression varies depending on the nature of the gene.

Components: The ORF clone is ion-exchange column purified and shipped in a 2D barcoded Matrix tube containing 10ug of transfection-ready, dried plasmid DNA (reconstitute with 100 ul of water).

Reconstitution Method:

1. Centrifuge at 5,000xg for 5min.
2. Carefully open the tube and add 100ul of sterile water to dissolve the DNA.
3. Close the tube and incubate for 10 minutes at room temperature.
4. Briefly vortex the tube and then do a quick spin (less than 5000xg) to concentrate the liquid at the bottom.
5. Store the suspended plasmid at -20°C. The DNA is stable for at least one year from date of shipping when stored at -20°C.

RefSeq: [NM_004510.4](#)

RefSeq Size: 2099 bp

RefSeq ORF: 1650 bp

Locus ID: 3431

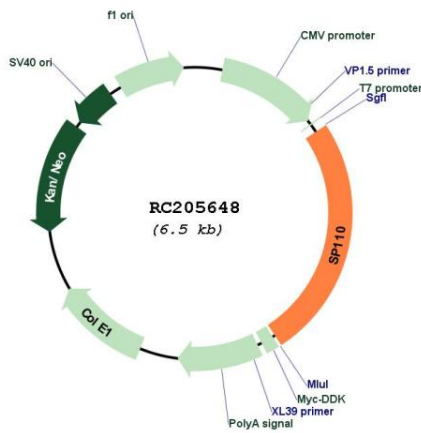
Cytogenetics: 2q37.1

Protein Families: Druggable Genome, Transcription Factors

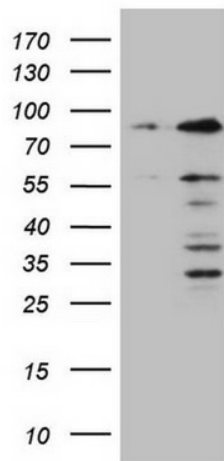
MW: 61.8 kDa

Gene Summary: The nuclear body is a multiprotein complex that may have a role in the regulation of gene transcription. This gene is a member of the SP100/SP140 family of nuclear body proteins and encodes a leukocyte-specific nuclear body component. The protein can function as an activator of gene transcription and may serve as a nuclear hormone receptor coactivator. In addition, it has been suggested that the protein may play a role in ribosome biogenesis and in the induction of myeloid cell differentiation. Alternative splicing has been observed for this gene and three transcript variants, encoding distinct isoforms, have been identified. [provided by RefSeq, Jul 2008]

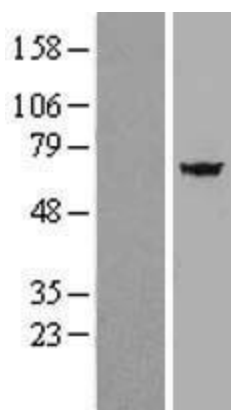
Product images:



Circular map for RC205648



HEK293T cells were transfected with the pCMV6-ENTRY control (Cat# [PS100001], Left lane) or pCMV6-ENTRY SP110 (Cat# RC205648, Right lane) cDNA for 48 hrs and lysed. Equivalent amounts of cell lysates (5 ug per lane) were separated by SDS-PAGE and immunoblotted with anti-SP110 (Cat# [TA807854]). Positive lysates [LY417943] (100ug) and [LC417943] (20ug) can be purchased separately from OriGene.



Western blot validation of overexpression lysate (Cat# [LY417943]) using anti-DDK antibody (Cat# [TA50011-100]). Left: Cell lysates from untransfected HEK293T cells; Right: Cell lysates from HEK293T cells transfected with RC205648 using transfection reagent MegaTran 2.0 (Cat# [TT210002]).