

Product datasheet for **RC205647**

RAB24 (NM_001031677) Human Tagged ORF Clone

Product data:

Product Type: Expression Plasmids
Product Name: RAB24 (NM_001031677) Human Tagged ORF Clone
Tag: Myc-DDK
Symbol: RAB24
Mammalian Cell Selection: Neomycin
Vector: pCMV6-Entry (PS100001)
E. coli Selection: Kanamycin (25 ug/mL)
ORF Nucleotide Sequence: >RC205647 ORF sequence
Red=Cloning site Blue=ORF Green=Tags(s)

TTTTGTAATACGACTCACTATAGGGCGGCCGGAATTCGTCGACTGGATCCGGTACCGAGGAGATCTGCC
GCC**CGATCGCC**

ATGAGCGGGCAGCGCGTGGACGTCAAGGTGGTGTGCTGGGCAAGGAGTACGTGGGCAAGACTAGCCTGG
TGGAGCGCTACGTGCACGACCGCTTTCTGGTGGGGCCTTATCAGAACCACCATCGGGGCCGCTTCGTGGC
CAAGGTGATGTCGGTCGGAGACCGGACTGTGACATTAGGTATTTGGGACACAGCAGGCTCTGAGCGCTAT
GAGGCCATGAGTAGAATCTACTATCGGGGTGCCAAGCTGCCATCGTCTGCTATGACCTCACAGACAGCA
GCAGCTTTGAGCGAGCAAAGTTCTGGTGAAGGAACTGCCGAGCCTAGAGGAGGGCTGCCAAATCTACTT
ATGTGGCACCAAGAGTACCTGCTGGAAGAAGACCGGAGGCGTGCACGTGTGGACTTCCACGACGTCCAG
GACTATGCAGACAATATCAAAGCTCAGCTCTTTGAAACATCCAGCAAGACAGGCCAGAGTGTGGACGAGC
TCTTCCAGAAAGTGGCAGAGGATTACGTCAAGTGTGGTGCCTTCCAGGTGATGACAGAGGACAAGGGCGT
GGATCTGGGCCAGAAGCCAAACCCTACTTCTACAGCTGTTGTCATCAC

ACGCGTACGCGGCCGCTCGAGCAGAAACTCATCTCAGAAGAGGATCTGGCAGCAAATGATATCCTGGATT
ACAAGGATGACGACGATAAGGTTTAA

Protein Sequence: >RC205647 protein sequence
Red=Cloning site Green=Tags(s)

MSGQRVDVKVVMLGKEYVGKTSLVERYVHDFL VGPYQNTIGAAFVAKVMSVGDRTVTLGIWDTAGSERY
EAMSRIYYRGAKAAIVCYDLTDSSFERAKFWKELRSLEEGCQIYLCGTSKDLLLEEDRRRRRVDFHDVQ
DYADNIKAQLFETSSKTGQSVDEL FQKVAEDYVSAAFQVMTEDKGVDLGQKPNPYFYSCCHH

TRTRPLEQKLISEEDLAANDILDYKDDDDKV

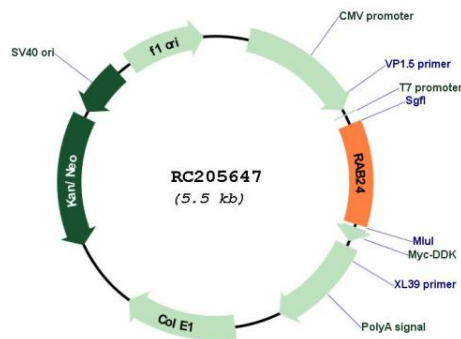
Chromatograms: https://cdn.origene.com/chromatograms/mk6420_g12.zip



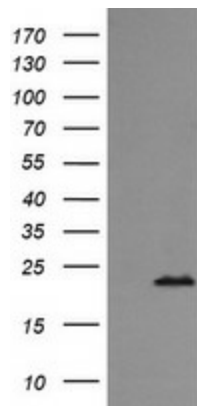
[View online >](#)

Locus ID: 53917
UniProt ID: [Q969Q5](#)
Cytogenetics: 5q35.3
Protein Families: Druggable Genome
MW: 23.1 kDa
Gene Summary: RAB24 is a small GTPase of the Rab subfamily of Ras-related proteins that regulate intracellular protein trafficking (Olkkonen et al., 1993 [PubMed 8126105]).[supplied by OMIM, Aug 2009]

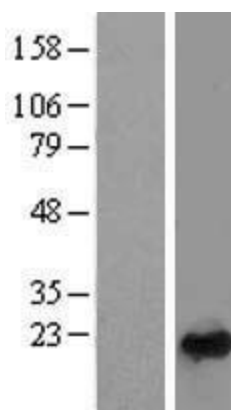
Product images:



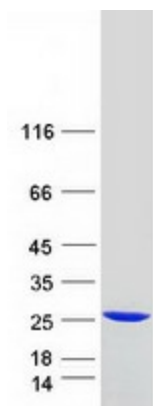
Circular map for RC205647



HEK293T cells were transfected with the pCMV6-ENTRY control (Cat# [PS100001], Left lane) or pCMV6-ENTRY RAB24 (Cat# RC205647, Right lane) cDNA for 48 hrs and lysed. Equivalent amounts of cell lysates (5 ug per lane) were separated by SDS-PAGE and immunoblotted with anti-RAB24 (Cat# [TA505690]). Positive lysates [LY422221] (100ug) and [LC422221] (20ug) can be purchased separately from OriGene.



Western blot validation of overexpression lysate (Cat# [LY422221]) using anti-DDK antibody (Cat# [TA50011-100]). Left: Cell lysates from untransfected HEK293T cells; Right: Cell lysates from HEK293T cells transfected with RC205647 using transfection reagent MegaTran 2.0 (Cat# [TT210002]).



Coomassie blue staining of purified RAB24 protein (Cat# [TP305647]). The protein was produced from HEK293T cells transfected with RAB24 cDNA clone (Cat# RC205647) using MegaTran 2.0 (Cat# [TT210002]).