

Product datasheet for RC205641L4

CDC25C (NM_001790) Human Tagged Lenti ORF Clone

Product data:

Product Type:	Expression Plasmids
Product Name:	CDC25C (NM_001790) Human Tagged Lenti ORF Clone
Tag:	mGFP
Symbol:	CDC25C
Synonyms:	CDC25; PPP1R60
Mammalian Cell Selection:	Puromycin
Vector:	pLenti-C-mGFP-P2A-Puro (PS100093)
E. coli Selection:	Chloramphenicol (34 ug/mL)
ORF Nucleotide Sequence:	The ORF insert of this clone is exactly the same as(RC205641).
Restriction Sites:	SgfI-MluI
Cloning Scheme:	

Cloning sites used for ORF Shuttling:



* The last codon before the Stop codon of the ORF.

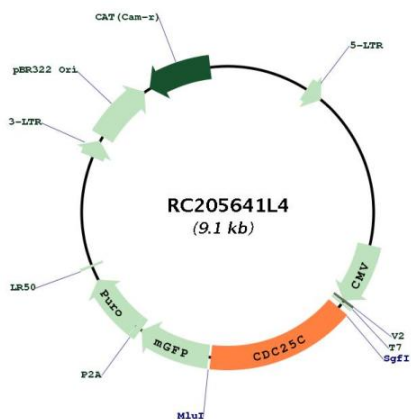
ACCN:	NM_001790
ORF Size:	1419 bp



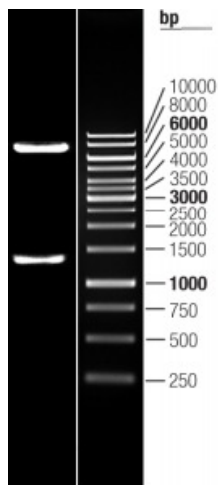
[View online »](#)

OTI Disclaimer:	The molecular sequence of this clone aligns with the gene accession number as a point of reference only. However, individual transcript sequences of the same gene can differ through naturally occurring variations (e.g. polymorphisms), each with its own valid existence. This clone is substantially in agreement with the reference, but a complete review of all prevailing variants is recommended prior to use. More info
OTI Annotation:	This clone was engineered to express the complete ORF with an expression tag. Expression varies depending on the nature of the gene.
Components:	The ORF clone is ion-exchange column purified and shipped in a 2D barcoded Matrix tube containing 10ug of transfection-ready, dried plasmid DNA (reconstitute with 100 ul of water).
Reconstitution Method:	<ol style="list-style-type: none">1. Centrifuge at 5,000xg for 5min.2. Carefully open the tube and add 100ul of sterile water to dissolve the DNA.3. Close the tube and incubate for 10 minutes at room temperature.4. Briefly vortex the tube and then do a quick spin (less than 5000xg) to concentrate the liquid at the bottom.5. Store the suspended plasmid at -20°C. The DNA is stable for at least one year from date of shipping when stored at -20°C.
RefSeq:	NM_001790.3 , NP_001781.1
RefSeq Size:	2191 bp
RefSeq ORF:	1422 bp
Locus ID:	995
UniProt ID:	P30307
Cytogenetics:	5q31.2
Domains:	RHOD
Protein Families:	Druggable Genome, Phosphatase, Stem cell - Pluripotency
Protein Pathways:	Cell cycle, Oocyte meiosis, Progesterone-mediated oocyte maturation
MW:	53.3 kDa
Gene Summary:	This gene encodes a conserved protein that plays a key role in the regulation of cell division. The encoded protein directs dephosphorylation of cyclin B-bound CDC2 and triggers entry into mitosis. It also suppresses p53-induced growth arrest. Multiple alternatively spliced transcript variants of this gene have been described. [provided by RefSeq, Dec 2015]

Product images:



Circular map for RC205641L4



Double digestion of RC205641L4 using SgfI and MluI