

Product datasheet for **RC205641**

CDC25C (NM_001790) Human Tagged ORF Clone

Product data:

Product Type:	Expression Plasmids
Product Name:	CDC25C (NM_001790) Human Tagged ORF Clone
Tag:	Myc-DDK
Symbol:	CDC25C
Synonyms:	CDC25; PPP1R60
Mammalian Cell Selection:	Neomycin
Vector:	pCMV6-Entry (PS100001)
E. coli Selection:	Kanamycin (25 ug/mL)



[View online »](#)

ORF Nucleotide Sequence:

>RC205641 ORF sequence
 Red=Cloning site Blue=ORF Green=Tags(s)

TTTTGTAATACGACTCACTATAGGGCGGCCGGAATTCGTCGACTGGATCCGGTACCGAGGAGATCTGCC
 GCC**GCGATCGCC**

ATGTCTACGGAAGCTTTCTCATCCACAAGAGAGGAAGGAAGCTCTGGCTCAGGACCCAGTTTATAGTCTA
 ATCAAAGGAAAAATGTTAAACCTGCTCCTGGAGAGAGACACTTCCTTTACGCTCTGTCAGATGTCCCTAG
 AACTCCAGTGGGCAAATTTCTGGTGATTCTGCAAACCTAAGCATTGTCTGGAGGAACCCCAAATGT
 TGCTCGATCTTTGCAATCTTAGCAGTGGGAGATAAAGTCCACTCAGCTTACCCTTCTGCAGACCTTG
 ATGAAACTGGTCACCTGGATTCTCAGGACTTCAGGAAGTGCATTTAGCTGGGATGAATCATGACCAGCA
 CCTAATGAAATGTAGCCAGCACAGCTTCTTTGTAGCACTCCGAATGGTTTGACCGTGGCCATAGAAAAG
 AGAGATGCAATGTGTAGTTCATCTGCAAATAAAGAAAAATGACAATGAAACTTGGTGACAGTGAATGA
 AATATTTGGGCAGTCCCATTACTACTGTCCAAAATTGGATAAAAAATCCAAACCTAGGAGAAGACCAGGC
 AGAAGAGATTTTCAGATGAATTAATGGAGTTTTCCCTGAAAGATCAAGAAGCAAAGGTGAGCAGAAGTGGC
 CTATATCGCTCCCGTGCATGCCAGAGAACTTGAACAGGCCAAGACTGAAGCAGGTGAAAAAATCAAGG
 ACAACACAATACCAGATAAAGTTAAAAAAAAGTATTTTTCTGGCCAAGGAAAGCTCAGGAAGGGCTTATG
 TTTAAAGAAGACAGTCTCTCTGTGTGACATTACTATCACTCAGATGCTGGAGGAAGATTCTAACCAGGGG
 CACCTGATTGGTGATTTTTCCAAGGATGTGCGCTGCCAACCGTGTGAGGAAACACCAAGATCTGAAGT
 ATGTCAACCCAGAAACAGTGGCTGCCTACTGTGCGGGAAAGTCCAGGGTCTGATTGAGAAGTTTTATGT
 CATTGATTGTCGATCCATATGAGTATCTGGGAGGACACATCCAGGGAGCCTTAAACTTATATAGTCAG
 GAAGAAGTGTAACTTCTTTCTGAAGAAGCCCATCGTCCCTTTGGACACCCAGAAGAGAATAATCATCG
 GTTCCACTGTGAATTCCTCAGAGAGGGGCCCGAATGTGCCGCTGTCTGCGTGAAGAGGACAGGCT
 TCTGAACCAAGTATCCTGCATTGTAACCCAGAGCTATATATCCTTAAAGGCGGCTACAGAGACTTCTTT
 CCAGAATATATGAACTGTGTGAACACAGAGCTACTGCCCTATGCATCATCAGGACCACAAGACTGAGT
 TGCTGAGGTGTCGAAGCCAGAGCAAAGTGCAGGAAGGGGAGCGGCAGCTGCGGGAGCAGATTGCCCTTCT
 GGTGAAGGACATGAGCCCA

ACGCGTACGCGGCCGCTCGAGCAGAAACTCATCTCAGAAGAGGATCTGGCAGCAAATGATATCCTGGATT
 ACAAGGATGACGACGATAAGGTTTAA

Protein Sequence:

>RC205641 protein sequence
 Red=Cloning site Green=Tags(s)

MSTELFSSTREEGSSGSGPSFRSNQRKMLNLLERDTSFTVCPDVPRTPVGKFLGDSANLSILSGGTPKC
 CLDLNLSNGEITATQLTTSADLDETHLDSGLQEVHLAGMNHQHLMKCSPAQLLCSTPNGLDRGHRK
 RDAMCSSANKENDNGNLVDSEMKYLGSPITTVPKLDKNPNLGEDQAEESIDELMEFSLKDQEAQVSRSG
 LYRSPSPENLNRPLKQVEKFKDNTIPDKVKKYFSGQGKLRKGLCLKKTVSLCDITITQMLEEDSNQG
 HLIIGDFSKVCALPTVSGKHQDLKYVNPETVAALLSGKFQGLIEKFYVIDCRYPYELGGHIQGALNLYSQ
 EELFNFFLKKPIVPLDTQKRIIVFHCEFSSERGRMCRCLREEDRSLNQYPALYPPELYILKGGYRDF
 PEYMELCEPQSYCPMHQDHKTELLRCRSQSKVQEGERQLREQIALLVKDMSP

TRTRPLEQKLISEEDLAANDILDYKDDDDKV

Chromatograms:

https://cdn.origene.com/chromatograms/mk6420_a02.zip

Restriction Sites:

Sgfl-MluI

Cloning Scheme:



ACCN: NM_001790

ORF Size: 1419 bp

OTI Disclaimer: The molecular sequence of this clone aligns with the gene accession number as a point of reference only. However, individual transcript sequences of the same gene can differ through naturally occurring variations (e.g. polymorphisms), each with its own valid existence. This clone is substantially in agreement with the reference, but a complete review of all prevailing variants is recommended prior to use. [More info](#)

OTI Annotation: This clone was engineered to express the complete ORF with an expression tag. Expression varies depending on the nature of the gene.

Components: The ORF clone is ion-exchange column purified and shipped in a 2D barcoded Matrix tube containing 10ug of transfection-ready, dried plasmid DNA (reconstitute with 100 ul of water).

- Reconstitution Method:
1. Centrifuge at 5,000xg for 5min.
 2. Carefully open the tube and add 100ul of sterile water to dissolve the DNA.
 3. Close the tube and incubate for 10 minutes at room temperature.
 4. Briefly vortex the tube and then do a quick spin (less than 5000xg) to concentrate the liquid at the bottom.
 5. Store the suspended plasmid at -20°C. The DNA is stable for at least one year from date of shipping when stored at -20°C.

RefSeq: [NM_001790.2](#), [NP_001781.1](#)

RefSeq Size: 2191 bp

RefSeq ORF: 1422 bp

Locus ID: 995

UniProt ID: [P30307](#)

Cytogenetics: 5q31.2

Domains: RHOD

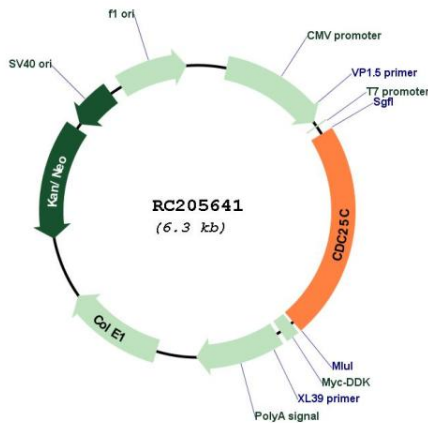
Protein Families: Druggable Genome, Phosphatase, Stem cell - Pluripotency

Protein Pathways: Cell cycle, Oocyte meiosis, Progesterone-mediated oocyte maturation

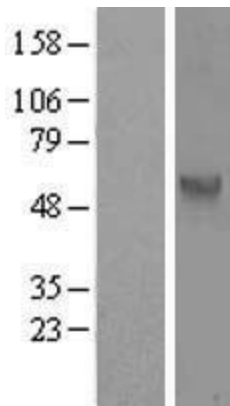
MW: 53.3 kDa

Gene Summary: This gene encodes a conserved protein that plays a key role in the regulation of cell division. The encoded protein directs dephosphorylation of cyclin B-bound CDC2 and triggers entry into mitosis. It also suppresses p53-induced growth arrest. Multiple alternatively spliced transcript variants of this gene have been described. [provided by RefSeq, Dec 2015]

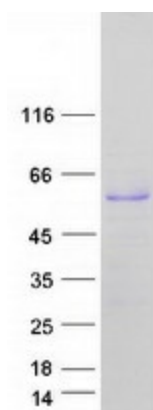
Product images:



Circular map for RC205641



Western blot validation of overexpression lysate (Cat# [LY419747]) using anti-DDK antibody (Cat# [TA50011-100]). Left: Cell lysates from untransfected HEK293T cells; Right: Cell lysates from HEK293T cells transfected with RC205641 using transfection reagent MegaTran 2.0 (Cat# [TT210002]).



Coomassie blue staining of purified CDC25C protein (Cat# [TP305641]). The protein was produced from HEK293T cells transfected with CDC25C cDNA clone (Cat# RC205641) using MegaTran 2.0 (Cat# [TT210002]).