

Product datasheet for **RC205639**

Apc6 (CDC16) (NM_003903) Human Tagged ORF Clone

Product data:

Product Type:	Expression Plasmids
Product Name:	Apc6 (CDC16) (NM_003903) Human Tagged ORF Clone
Tag:	Myc-DDK
Symbol:	Apc6
Synonyms:	ANAPC6; APC6; CDC16Hs; CUT9
Mammalian Cell Selection:	Neomycin
Vector:	pCMV6-Entry (PS100001)
E. coli Selection:	Kanamycin (25 ug/mL)



[View online »](#)

ORF Nucleotide Sequence:

>RC205639 representing NM_003903
 Red=Cloning site Blue=ORF Green=Tags(s)

TTTTGTAATACGACTCACTATAGGGCGGCCGGAATTCGTCGACTGGATCCGGTACCGAGGAGATCTGCC
 GCC**CGCATCGCC**

ATGAACCTAGAGCGGCTGCGGAAGCGCTCCGGCAGTACCTCGACCAGCAACAGTATCAAAGTGCTCTAT
 TTTGGGCAGATAAAGTAGCTTCACTCTCTCGTGAAGAACCCAGGACATCTATTGGTTGGCTCAATGTCT
 TTACCTGACAGCACAATATCACAGAGCCGCCATGCACCTTCGGTACGAAAAGTGGACAAATTTGATGAA
 GCATGTCGTTACCTTGCAGCTAGGTGCCATTATGCTGCAAAAAGAGCACCAGCAGGCCCTTGATGTTCTTG
 ACATGGAAGAGCCCATCAATAAAAGATTATTTGAAAAACTTGAAGGATGAAAGTGGCTTCAAAGATCC
 CTCCAGCGACTGGGAAATGTCACAGTCTCAATAAAGAGTTCTATCTGTCTTCTACGCGGAAAAATCTAT
 GATGCTCTAGATAACCGAACCTGGCTACCTACAGCTACAAGAAGCTTTGAAGCTTGATGTCTACTGTT
 TTGAAGCGTTCGATCTTTAACATCACATCACATGCTGACAGCACAAGAAGAAAAAGAACTTCTTGAATC
 ACTACCCCTTAGCAAGCTGTGTAATGAAGAACAGGAATTGCTGCGTTTTCTATTTGAGAACAATGAAA
 AAATAAATAAGCCTAGTGAAACGGTCATCCCTGAATCTGTAGATGGCTTGAAGAGAATCTGGATGTGG
 TAGTGTCTTTAGCTGAGAGACATTATTAACTGTGATTTAAAAATGTGCTACAAGCTTACTTCTGTAGT
 AATGGAGAAAGATCCTTTCCATGCAAGTTGTTTACCTGTACATATAGGGACGCTTGTAGAGCTGAATAAA
 GCCAATGAACTTTTCTATCTTTCTATAAACTGGTGGATTTATATCCTAGTAATCCTGTGTCTTGGTTTG
 CAGTGGGATGTTACTATCTCATGGTCCGTCATAAAAAATGAACATGCCAGAAGATATCTCAGCAAAGCCAC
 AACACTTGAGAAAACCTATGGACCTGCATGGATAGCCTATGGACATTCATTTGCGGTGGAGAGTGAGCAC
 GACCAAGCGATGGCTGCTTACTTACAGCAGCACAGCTGATGAAAGGGTGTCAATTTGCCTATGCTGTATA
 TTGGATTAGAATATGGTTTGACCAATAACTCAAACTAGCTGAAAGGTTCTTCAGCCAAGCTCTGAGCAT
 TGCACCGGAAGACCCCTTTGTTATGCATGAGGTGCGCGTGGTTCATTTAGAATGGAGAATGGAAAAACA
 GCCGAAAAATGGTTTCTTGATGCTTTGGAAAAATTAAGCAATTGGGAACGAGGTAACAGTTGACAAAT
 GGGAACCTTTGTTGAACAACCTGGGGCATGTCTGCAGAAAACCTAAAAAGTATGCTGAGGCCTGGATTA
 CCACCGTCAGGCACTGGTGTGATTCTCAGAACGCATCCACCTACTCTGCTATTGGATATATCCACAGT
 CTGATGGGCACTTTGAAAATGCTGTGGACTACTTCCACACAGCCCTGGTCTTAGGCGAGATGATACAT
 TTTCTGTTACAATGCTTGGTTCATGCATCGAAATGTACATTGGTATTCTGAAGCTTATATCGGAGCAGA
 CATTAAAGACAAATTAATGTTATGACTTTGATGTGCATACAATGAAGACTAAAAAACATTATTTCA
 CCTCCGTGGGATTTAGGGAATTTGAAGTAGAAAAACAGACTGCAGAAGAAACGGGGCTTACGCCATTGG
 AAACCTCAAGGAAAACCTCAGATTCCAGACCTTCTTGGAAAGAACTTTGAAATGAAATGAATGAAAG
 TGACATGATGTTAGAGACATCTATGTCAGACCACAGCAGC

ACGCGTACGCGGCCGCTCGAGCAGAAACTCATCTCAGAAGAGGATCTGGCAGCAATGATATCCTGGATT
 ACAAGGATGACGACGATAAGGTTTAA

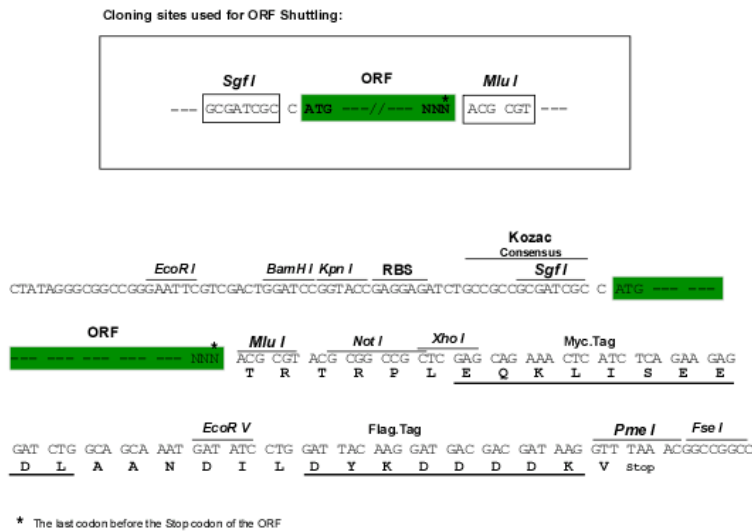
Protein Sequence:

>RC205639 representing NM_003903
 Red=Cloning site Green=Tags(s)

MNLERLRKRVRYLDQQQYQSALFWADKVASLSREEPQDIYWLAQCLYLTAQYHRAAAHALRSRKLDKLYE
 ACRYLAARCHYAAKEHQALDVLDMEEPINKRLEKYLKDESGFKDPSSDWEMSQSSSIKSSICLLRGKIY
 DALDNRTLATYSYKEALKLDVYCFEAFDLLTSHHMLTAQEEKELLESPLSKLCNEEQELLRFLFENKLE
 KYNKPSETVIPESVDGLQENLDVVVSLAERHYNCDFKMCYKLSVVMKDPFHASCLPVHIGTLVELNK
 ANELFYLSHKLVDLYPSNPVSWFVAVGCYLLMVGHKNEHARRYLSKATTLKTYGPAWIYGHFSFAVESEH
 DQAMAAYFTAQMLKMGCHLPMLYIGLEYLGNNSKLAERFFSQALSIAPEDPFVMHEVGVVAFQNGEWT
 AEKWFLDALEKIKAIIGNEVTVDKWEPLNLGHVCRKLLKYAEALDYHRQALVLIQONASTYSAIGYIHS
 LMGNFENAVDYFHTALGLRRDDTFVSTMLGHCIEMYIGDSEAYIGADIKDKLKCYPDVDVHTMKTLLKNIIS
 PPWDFREFEVEKQTAETGLTPLETSRKTTPDSRPSLEETFEIEMNESDMMLETSMDSHST

TRTRPLEQKLISEEDLAANDILDYKDDDDKV

Chromatograms: https://cdn.origene.com/chromatograms/mg2930_e09.zip
 Restriction Sites: SgfI-MluI
 Cloning Scheme:



ACCN: NM_003903

ORF Size: 1860 bp

OTI Disclaimer: The molecular sequence of this clone aligns with the gene accession number as a point of reference only. However, individual transcript sequences of the same gene can differ through naturally occurring variations (e.g. polymorphisms), each with its own valid existence. This clone is substantially in agreement with the reference, but a complete review of all prevailing variants is recommended prior to use. [More info](#)

OTI Annotation: This clone was engineered to express the complete ORF with an expression tag. Expression varies depending on the nature of the gene.

Components: The ORF clone is ion-exchange column purified and shipped in a 2D barcoded Matrix tube containing 10ug of transfection-ready, dried plasmid DNA (reconstitute with 100 ul of water).

- Reconstitution Method:
1. Centrifuge at 5,000xg for 5min.
 2. Carefully open the tube and add 100ul of sterile water to dissolve the DNA.
 3. Close the tube and incubate for 10 minutes at room temperature.
 4. Briefly vortex the tube and then do a quick spin (less than 5000xg) to concentrate the liquid at the bottom.
 5. Store the suspended plasmid at -20°C. The DNA is stable for at least one year from date of shipping when stored at -20°C.

RefSeq: [NM_003903.4](#)

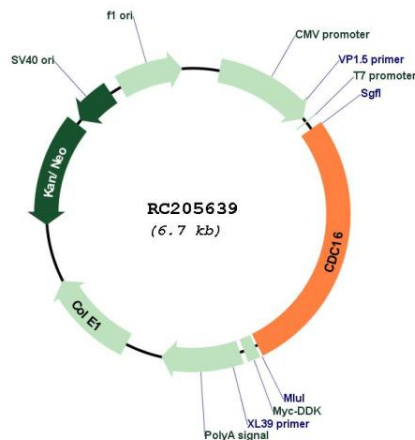
RefSeq Size: 2235 bp

RefSeq ORF: 1863 bp

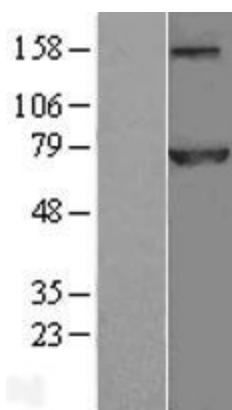
Locus ID: 8881
UniProt ID: [Q13042](#)
Cytogenetics: 13q34
Domains: TPR
Protein Families: Druggable Genome
Protein Pathways: Cell cycle, Oocyte meiosis, Progesterone-mediated oocyte maturation, Ubiquitin mediated proteolysis
MW: 71.5 kDa

Gene Summary: The protein encoded by this gene functions as a protein ubiquitin ligase and is a component of the multiprotein APC complex. The APC complex is a cyclin degradation system that governs exit from mitosis by targeting cell cycle proteins for degradation by the 26S proteasome. Each component protein of the APC complex is highly conserved among eukaryotic organisms. This protein, and other APC complex proteins, contain a tetratricopeptide repeat (TPR) domain; a protein domain that is often involved in protein-protein interactions and the assembly of multiprotein complexes. Multiple alternatively spliced transcript variants, encoding distinct proteins, have been identified. [provided by RefSeq, Jan 2016]

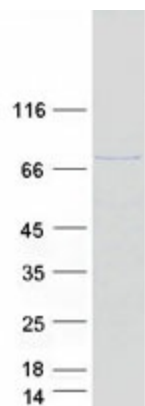
Product images:



Circular map for RC205639



Western blot validation of overexpression lysate (Cat# [LY418359]) using anti-DDK antibody (Cat# [TA50011-100]). Left: Cell lysates from untransfected HEK293T cells; Right: Cell lysates from HEK293T cells transfected with RC205639 using transfection reagent MegaTran 2.0 (Cat# [TT210002]).



Coomassie blue staining of purified CDC16 protein (Cat# [TP305639]). The protein was produced from HEK293T cells transfected with CDC16 cDNA clone (Cat# RC205639) using MegaTran 2.0 (Cat# [TT210002]).